



▶▶ PROtect tapes[®]
2021

IR-X & GIVE BACK

Committed to environment

At **PROtect tapes**, we focus on opportunities that make good business sense. And we believe that sustainability makes good business sense.

Since day one, we have been working with designers, material scientists, industry experts and future thinkers from around the world to bring new ideas and technologies to light and inspire innovation.

Two years ago we have launched **BOW #**, a new range of stickers for bow number and advertising made of bioplastic films that use renewable resources to reduce environmental impact.

Last year, we have finally completed the **SPK** (Safe Packing Kite) project, an innovative system to hoist gennaker and spinnaker much safer and to respect the environment. In designing the product, special attention has been devoted to the material and the choice went to highly sustainable materials.

Recycling a **PROtect tapes** product is as easy as it is good for the planet. The **GIVE BACK** recycling program allows us to recycle the products (CHAFE, MASK and INTERIOR only), to prevent them from ending up in landfills and be used in the creation of new products.

In 2020, we collected 2500 square meters of materials, reprocessed blending with virgin polyethylene resulting in a cost effective alternative to virgin raw materials.

The diversity of products that we produce clearly improves the quality of life of sailing in many aspects and works towards a more sustainable environment.

This year **IR-X** a new class of modified polymers on an acrylic casting base.

The capability to shield the infrared radiation (responsible for the heat from radiation) and the ultraviolet radiation (responsible of the premature materials aging) is into the composition.

IR-X is an intelligent and performing polymer because it allows all visible light to pass almost unaltered.

It is the ideal replacement of transparent plastic material (such as polycarbonates and methacrylates) in the creation of transparent plastic surfaces.

Unlike the materials mentioned, it prevents the sun's heat and ultraviolet radiation from passing through the material.

▶▶ PROtect tapes®

Explorers of innovation

NEW

- CHAFE** PCK001 Mixed CHAFE 0.5m (20")
- PMK033 Pads for genoa blocks
- PMK034 Pads for gennaker blocks
- MASK** PMY012 Storage box for 12mm (1/2")
- PMY025 Storage box for 25mm (1")
- WRAP** PWM2MM Wrap 2mm thick
- IR-X** JR-X P modified polymers on an acrylic casting base to shield the infrared radiation and the ultraviolet radiation
- IR-X TB
- SPK** SPK003SX 650m (711yds) yarn ball
- SPK003MX 500m (550yds) yarn ball
- HAUL** PMK031R propeller and speed/depth
- PMK031B transducer locators

PROtect tapes are a broad range of protective tapes and solutions for dinghies, racing, cruising and super yachts. Our products address serious chafing, abrasion, scratches, damages, ageing and wear.

The critical factor to success has been the combination of unique technical film experience from polymer and adhesive specialists and sailing expertise of professional sailors.

They are effective solutions for the owners, captains, mast and boat builders, shore teams, riggers and sailmakers looking for superior and competitive product to enhance performances and ultimately win the race or simply reliability and have a safer cruising.

The years since **PROtect tapes** was established in 2008 have been extraordinary.

We have grown from a tiny startup to become a leading company focused on the niche area of tapes and solutions for the yachting industry.

Today, it is young, vigorous, brash, ambitious, full of ideas and dreams due to smart people, unique equipment, steady hands and smiling faces.

We use our bikes as much as we can, drink squeezed orange juice and gossip about life.

We are **PROtect tapes**.



Excellence in safety, health and environmental performance



Focus on customer satisfaction, total quality and reliability



Continuous improvement to become a cost effective producer of high quality products



Encouragement of innovation, entrepreneurship and reward for achievement



Empowerment of employees to create real value for our customers and ourselves

DO NOT USE PROtect tapes for HUMAN SUSPENSION





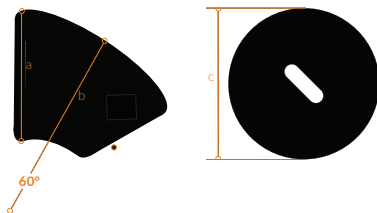
CHAFE is a pressure sensitive tape using UHMWPE (ultra high molecular weight polyethylene) film with a very strong acrylic adhesive. It has high resistance to abrasion (15 times more resistant than carbon steel), self-lubricating properties and extremely low coefficient of friction. The result is a very tough material, with the highest impact strength of any thermoplastic presently made. The product is available in black and translucent and various standard widths. Custom slitting, cutting and die cutting on demand.

Typical applications:

- dragging lines over the deck
- mooring ropes area
- mast (front and shave box) and leading edge spreaders
- under the boom to protect it from spinnaker/gennaker sheet
- pad eyes on the deck for blocks and hardware
- daggerboards and bearings
- stanchions
- battens and sails



| Part code | Product | Quantity | Size |
|-----------|--------------------------------------|--------------------|------------------------------------|
| PCK001 | PCB250 PCB500 PCT250 PCT500 | 1 piece each | 51mm x 500mm 2" x 16.4" |
| PMK033S | PCB500 | For blocks - 2 pcs | c=200mm c=8" |
| PMK033M | | | c=240mm c=9" 3/5 |
| PMK033L | | c=300mm c=12" | |
| PMK034S | | For blocks - 2 pcs | a=103mm b=130mm a=4.06" b=5.12" |
| PMK003M | | | a=158mm b=200mm a=6.22" b=7.87" |
| PMK003L | | | a=198mm b=250mm a=7.80" b=9.84" |
| | | | |



| Part code | Color | Adhesive | Thickness | | Width | | Length | | | |
|-----------|-------------|-----------------|-----------|-----|-------------------------------------|----------------------------------|--------|----|------|-----|
| | | | mm | mil | mm | in | m | ft | | |
| PCB076 | Black | Acrylic w/liner | 0.076 | 3 | 25 51 152 min 7 max 660 | 1 2 6 min 1/4 max 26 | 16.5 | 54 | | |
| PCB125 | | | 0.125 | 5 | | | | | | |
| PCB250 | | | 0.250 | 10 | | | | | | |
| PCB500 | | | 0.500 | 20 | | | | | | |
| PCB1000 | | | 1.000 | 40 | min 6.35 max 610 | min 1/4 max 24 | | | 30.5 | 100 |
| PCB1570 | | | 1.570 | 60 | | | | | | |
| PCB2360 | | | 2.360 | 93 | | | | | | |
| PCB3170 | 3.170 | 120 | | | | | | | | |
| PCT076 | Translucent | Acrylic w/liner | 0.076 | 3 | 25 51 152 min 7 max 660 | 1 2 6 min 1/4 max 26 | 16.5 | 54 | | |
| PCT125 | | | 0.125 | 5 | | | | | | |
| PCT250 | | | 0.250 | 10 | | | | | | |
| PCT500 | | | 0.500 | 20 | | | | | | |
| PCT1000 | | | 1.000 | 40 | min 6.35 max 610 | min 1/4 max 24 | | | 30.5 | 100 |
| PCT1570 | | | 1.570 | 60 | | | | | | |
| PCT2360 | | | 2.360 | 93 | | | | | | |
| PCT3170 | 3.170 | 120 | | | | | | | | |

CHAFE above 500 micron (20mil) are normally without adhesive; available with adhesive on demand. Product code PCTXXXXCA or PCBXXXXCA.

SHOCK & SHIELD

SHOCK is a further evolution of CHAFE products, to resist to abrasion and shocks from blocks, press locks, snap and halyards shackles.

The first evolution is made of aliphatic polyurethane resin film laminated between CHAFE and a modified acrylic adhesive and finally protected by a siliconised paper to make easy and friendly handling, die cut and application.

Any CHAFE film can be used, ideally 250 or 500 micron (10 or 20 mil).

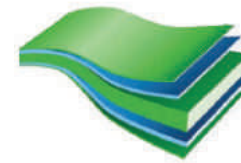
The product is made on demand and tailor made in the width, length and shape required.

The further step is PSX made of lightweight, flexible, microcellular, open cell suitable for multiple high impact protection. It absorbs more energy than comparable materials, nearly twice. The impact is also distributed over a greater area without through the material and to the other side.

SHIELD have been specially developed for protecting susceptible areas of the boat from damage from shock, chafe and scuffing. The films are produced from high grade polyurethane, which has excellent high impact resistance, excellent transparency and high gloss. The films are coated with quality acrylic adhesive with very good long term ageing properties. Tested in most extreme climatic conditions, the films will not crack, discolour or shrink.

Typical applications:

- soft loops and pad eye areas
- mast, boom and spreaders
- bowsprit
- windows/hatches



Liner
Acrylic adhesive
Open Cell
Acrylic adhesive
UHMWPE

PSX structure

SHOCK

| Part code | Color | Adhesive | Thickness | | Width | | Max Length | |
|-------------|-------------|-----------------|-----------|-----|--|---------------------|------------|----|
| | | | mm | mil | mm | in | m | ft |
| PSB076 | Black | Acrylic w/liner | 0.076 | 3 | min 38 max 660 | min 1 1/2 max 26 | 16.5 | 54 |
| PSB125 | | | 0.125 | 5 | | | | |
| PSB250 | | | 0.250 | 10 | | | | |
| PSB500 | | | 0.500 | 20 | | | | |
| PST076 | Translucent | | 0.076 | 3 | | | | |
| PST125 | | | 0.125 | 5 | | | | |
| PST250 | | | 0.250 | 10 | | | | |
| PST500 | | | 0.500 | 20 | | | | |
| PSX250XXXXY | Black | | 0.250 | 10 | PSX: Extreme impact protection are made on demand using different materials listed on table on the right | | | |
| PSX500XXXXY | | | 0.500 | 20 | | | | |

Plotting service available on all SHOCK and SHIELD products

SHIELD

| Part code | Color | Adhesive | Thickness | | Width | | Max Length | |
|-----------|-------|-----------------|-----------|------|----------|--------|------------|------|
| | | | mm | mil | mm | in | m | ft |
| PSC190 | Clear | Acrylic w/liner | 0.190 | 7.5 | max 1524 | max 60 | 50 | 54.6 |
| PSC225 | | | 0.225 | 8.86 | max 500 | max 20 | 15 | 16.4 |

PSX code XXXYY

| Density g/l lb/ft ³ | Thickness mm mil | PSX code XXXYY | | | | | | | |
|--------------------------------------|------------------------|----------------|-------|-------|---|-------|-------|-------|--|
| | | 2 | 3 | 4 | 5 | 6 | 9.5 | 12.7 | |
| 144 | 9 | | | 14404 | | 14406 | 14410 | 14413 | |
| 192 | 12 | 19202 | 19203 | 19204 | | 19206 | 19210 | 19213 | |
| 240 | 15 | 24002 | 24003 | 24004 | | 24006 | 24010 | 24013 | |
| 320 | 20 | 32002 | 32003 | | | 32006 | 32010 | | |
| 400 | 25 | 40002 | 40003 | | | | | | |







MASK is the rigging tape.

Riggers and sailors call our best seller PMG050 *the millionaire tape* or *gecko tape*, a mast have into the sailor trousers pockets.

The tape combines highly tensilized skived modified PTFE (a synthetic fluoro-polymer) with a high temperature silicon or acrylic adhesives.

They have the highest tensile strength per unit, toughness and high temperature resistance of any PTFE product.

The low friction coefficient together with the resistance to abrasion offers an efficient solution to many wearing and tearing issues.

Typical applications:

- running rigging
- bobstays and strops
- standing rigging, spreaders and turnbuckles
- forestay, backstay, runners and other cables
- all uneven or irregular surfaces
- ideal for wrapping parts where build up can occur

Two boxes protect your Millionaire tape either inside the tools box or when you climb on the mast

| Part code | Description |
|-----------|--|
| PMY012 | Box for storage any mask tape of up to 12.7mm (1/2") x 33m (36yds) |
| PMY025 | Box for storage any mask tape of up to 25mm (1") x 33m (36yds) |



| Part code | Color | Adhesive | Liner | Thickness | | | | Elongation at break | Width | | Length | | |
|-----------|------------|----------|-------|-----------|-----|----------|-----|---------------------|---|--|--------|----|-----|
| | | | | film | | adhesive | | | % | mm | in | m | yds |
| | | | | micron | mil | micron | mil | | | | | | |
| PMO064 | Orange | Silicon | -- | 64 | 2.5 | 38 | 1.5 | 140 | 12 25 32 51 102 min 7 max 564 | 1/2 1 1 1/4 2 4 min 1/4 max 21.5 | 33 | 36 | |
| PMB064 | Blue | | -- | 64 | 2.5 | 45 | 1.8 | | | | | | |
| PMG050 | Grey | | -- | 50 | 2 | 38 | 1.5 | | | | | | |
| PMG076 | | | -- | 76 | 3 | | | | | | | | |
| PMH125L | Light Grey | | yes | -- | 125 | | | 5 | | | | | 300 |
| PMH250L | | | | -- | 250 | | | 10 | | | | | |
| PMH500L | | | | -- | 500 | | | 20 | | | | | |
| PML050 | | | -- | 50 | 2 | | | 140 | | | | | |
| PML125 | | | yes | -- | 125 | | | | | | | | |
| PML250L | -- | | | 250 | 10 | | | | | | | | |
| PML500L | -- | 500 | | 20 | | | | | | | | | |
| PMA050 | Grey | Acrylic | -- | 50 | 2 | | | | | | | | |

L at the end of the part codes means product with liner. PMG050, PML050 and PML125 are available with liner on request.

HEADFOIL

HEADFOIL is the ideal protection against damages to plastic, composite or metallic headfoil from severe contact abrasion of rotating spinnaker/guy or gennaker sheets during internal gybe or kite drop. It is a combination of modified UHMWPE polymers films and strong acrylic or silicon adhesives.

The standard product is suitable for small boats up to 12m (40') and available in two colors: translucent (PHTXXX) or black (PHBXXX).

PHPXXX (high performances), available in light grey with silicon adhesive only, is strongly recommended for larger and grand prix yachts or whenever a superior resistance is required.

The differences between the two versions are the polymers, the temperature resistance of the films and the type of the adhesives.

All products are very easy to use and apply because already cut to the standard sizes of any headfoil systems.

Custom widths and lengths are available on demand.

XXX stands for the standard width (001-002-003)

PHTXXX, PHBXXX and PHPXXX are available in any length and in this case the part code is PHTXXXC, PHBXXXC and PHPXXXC.



| Part code | Color | Thickness | | Width | | Length | | Compatible headfoil system |
|-----------|-------------|-----------|-----|-------|------|--------|------|--|
| | | micron | mil | mm | in | m | yds | |
| PHT001 | Translucent | 250 | 10 | 34 | 1.34 | 1.5 | 1.64 | Harken Unit 0 |
| PHB001 | Black | | | | | | | J-Lift 5085 |
| PHP001 | Light grey | | | | | | | Tuff Luff 1205 and 1706 |
| PHT002 | Translucent | | | 40 | 1.57 | 2.0 | 2.19 | Harken Unit 1 |
| PHB002 | Black | | | | | | | J-Lift 5100 and 5095/R |
| PHP002 | Light grey | | | | | | | Tuff Luff 2206 and 2506 |
| PHT003 | Translucent | | | 51 | 2.00 | 4 | 4.37 | Harken Unit 2&3 |
| PHB003 | Black | | | | | | | J-Lift 5115 and 5164 |
| PHP003 | Light grey | | | | | | | Tuff Luff from 3007 to 7608 and TL1003/4 |

PHT, PHB and PHP are available on request in any width and length







LOOPX are the strongest man made adhesive tapes.

Tapes are available in two versions, reinforced with Endumax[®], a lightweight, highly effective and flexible UHMWPE tape and another one with Dyneema[®] Fibers, an ultra high strength fiber made of UHMWPE.

In the PLT series the thin and strong adhesive has two functions: to hold either the fibers or tapes in the desired position and to guarantee the adhesion between the layers when the loop is manually made.

PLS series has been designed to make laminated loops because the surface of the tape is treated for heatsealing.

With LOOPX high load and small loops no longer require skills and expertise, complex sequence of operations, complicated steps and tools.

Anybody can make his own loop in the length required, even very small and in just few minutes. It is very practical, translucent, strong and light.

Typical applications:

- bobstays
- runner attachments
- soft attach block

| Part code | Color | Adhesive | Liner | Gauge | | Tape width | | Length | | Working load* | | Fibers/tape | |
|----------------|-------------|----------|-------|--------|-----|------------|------|--------|------|-----------------|-------------------------------------|-----------------|--------------------------------|
| | | | | micron | mil | mm | in | m | yds | Kg | Lbs | Quantity/Width | type |
| PLT0760120613T | Translucent | Acrylic | WKr | 76 | 3 | 12 | 1/2 | 3 | 3.3 | 515 | 1134 | 1 x 6mm (1/4") | Endumax [®] tape |
| PLT0760190613T | | | | | | 19 | 3/4 | | | 1030 | 2269 | 1 x 12mm (1/2") | Endumax [®] tape |
| PLT0760250233T | | | | | | 515 | 1134 | | | 3 x 2mm (5/64") | Endumax [®] tape | | |
| PLT0760250133F | | | | | | 25 | 1 | | | 1130 | 2489 | 3 | Dyneema [®] UD fibers |
| PLT0760250133W | | | | | | 4120 | 9075 | | | 3 x 5 | Endumax [®] twisted fibers | | |
| PLS000012X1 | -- | -- | -- | 210 | 8 | -- | -- | 1920 | 4229 | 1 x 12mm (1/2") | Endumax [®] tape | | |
| PLS000019X1 | -- | -- | -- | 210 | 8 | -- | -- | 3040 | 6695 | 1 x 19mm (3/4") | Endumax [®] tape | | |

Endumax[®] is an ultra high molecular weight polyethylene (UHMW-PE), produced by Teijin. Endumax[®] is a lightweight, highly effective and flexible PE-tape.

Dyneema[®] and Dyneema[®], the world's strongest fiber[™] are trademarks of DSM. Use of these trademarks is prohibited unless strictly authorized.

Liner WKr = White Silicon Kraft

KIT

KIT are a selection of tapes and disks fully compliant with class rules, die cut, ready to apply on the small boats and dinghies.

They have been designed with the support of professional coached and sailors such as Fernando “Happy” Alegre (Optimist), Simon Payne (Moth) or Nathan Outtridge and Iain Jensen (49er) and contain a large selection of CHAFE, MASK, SHRINK and WRAP to cover all possible needs.

On top of the above ready made products, CHAFE is the material used for patches kits available in different sizes (from A6 to A4) and quantity ready to be applied on the boat. Kits currently available:

- Optimist
- Laser
- Moth
- 29er, 49er/49er FX
- Nacra 17
- SB20
- Topper
- Dinghy 12'
- J70
- Melges 20 & Melges 32



| Boat | Part code | Pieces | Bowspit | Pole lancher | Kite throat | Jib luff/A-headfoil | Cross beam | Centreboard | Traveller Blocks | Rudder | Mast step | Mast collar | Top mast section | Lower mast section | Mast front | Sprit | Gaff | Outhaul | Boom | Vang | Turmbuckles | Mast bench | Tiller | Companboway | Wing | Cambers | Rigging | Hayard exit/Furler | Spreader/Tips | Tie bells | Mainsheet racket | Control lines moles | Trapeze shockcord | Foot straps | Stanchions/lifelines | Pupit | Kite pad eye | D1/V1 | Hatch | Interior/Kite drop | | | | |
|--------------|----------------|--------|---------|--------------|-------------|---------------------|------------|-------------|------------------|--------|-----------|-------------|------------------|--------------------|------------|-------|------|---------|------|------|-------------|------------|--------|-------------|------|---------|---------|--------------------|---------------|-----------|------------------|---------------------|-------------------|-------------|----------------------|-------|--------------|-------|-------|--------------------|---|---|---|--|
| Optimist | PMK066 | 29 | | | | | | • | • | • | | | | | • | • | • | | | | | | | | | | | | | | | | | | | | | | | | | | | |
| Laser® | PML001 | 2 | | | | | | | | | | | | | | | | | | | | | | | | | | | | | | | | | | | | | | | | | | |
| Laser® | PML002 | 1 | | | | | | | | | | | | | | | | | | | | | | | | | | | | | | | | | | | | | | | | | | |
| Laser® | PML003 | 13 | | | | | | • | | | • | • | • | • | | | | • | | | | | | • | | | | | | | | | | | | | | | | | | | | |
| Laser® | PML004 | 2 | | | | | | | | | | | | • | • | | | | | | | | | | | | | | | | | | | | | | | | | | | | | |
| Laser® | PML007 | 5 | | | | | | • | | | | | | | | | | | | | | | | | | | | | | | | | | | | | | | | | | | | |
| Laser® | PML008 | 4 | | | | | | | • | | | | | | | | | | | | | | | | | | | | | | | | | | | | | | | | | | | |
| Moth | PMK001 | 8 | | | | | | • | • | | | | | | | | | • | • | • | | | | | • | • | • | • | | | | | | | | | | | | | | | | |
| 29er® | PMK029 | 10 | • | • | • | • | | | | | | | | | | | | | | | | | | | | | | | | | | | | | | | | | | | | | | |
| 49er/49er FX | PMK029 | 28 | • | • | • | • | • | • | • | • | | | | | • | | | • | • | • | | | | | | | • | • | • | • | • | • | • | • | • | • | • | • | • | • | • | • | | |
| Nacra 17 | PMK062 | 31 | • | • | • | • | • | • | • | • | | | | | • | | | • | • | • | | | | | | | • | • | • | • | | | | | | | | | | | | | | |
| Nacra 17 | PMK063 | 2 | | | | | | • | | | | | | | | | | | | | | | | | | | | | | | | | | | | | | | | | | | | |
| Nacra 17 | PMK064 | 8 | • | | | | | | | | | | | | | | | | | | | | | | | | | | | | | | | | | | | | | | | | | |
| SB20 | PMK020 | 10 | • | • | • | | | | | | | | | | • | | | | | | | | | | | | • | | | | | | | | | | | | | • | | | | |
| Topper | PMK078 | 1 | | | | | | | | | • | | | | | | | | | | | | | | | | | | | | | | | | | | | | | | | | | |
| Dinghy 12' | PMK120 | 28 | | | | | | • | • | • | • | | | | • | • | • | • | • | • | • | • | | | | | | • | • | | | | | | | | | | | | | | | |
| J70® | PMK067/PMK067T | 10/14 | | | | | | | | | | | | | • | • | • | • | • | • | • | • | | | | | • | • | • | • | | | | | | | | | | | | | | |
| Melges 20 | PMK910 | 1 | | | | | | | | | | | | | • | | | | | | | | | | | | • | | | | | | | | | | | | | | | | | |
| Melges 32 | PMK912 | 1 | | | | | | | | | | | | | • | | | | | | | | | | | | • | | | | | | | | | | | | | | | | | |
| Melges 32 | PMK999 | 9 | • | • | • | | | | • | • | | | | | • | | | | | | | | | | | | • | • | • | • | | | | | | | | | | • | • | • | • | |

PIECES PER PACK

| Part code | Thickness | | micron | | mil | | 125 | | 250 | | 500 | |
|-----------|-----------|----|--------|-----|-----|-----|-----|----|-----|----|-----|--|
| | 51 x 152 | A5 | A4 | 125 | 250 | 500 | 10 | 20 | 20 | 40 | 40 | |
| PMK002 | 2 | | | | | | | | | | | |
| PMK040 | | 1 | | | | | | | | | | |
| PMK050 | | | | | | | | | | 1 | 2 | |
| PMK060 | | | 1 | | | | | | | 2 | | |
| PMK070 | | | | | | | | | | | 4 | |
| PMK080 | | | | | | | | | | | 4 | |

MAST PAD CODES FOR MELGES 20 AND 32 upon technology

| | | |
|--------------------|--------------|-----------|
| ----- CHAFE (p. 5) | SHOCK (p. 6) | PSX(p. 6) |
| PMK010 | PMK910 | PMK510 |
| PMK012 | PMK912 | PMK512 |

All kits contain item list (see SB20 next page) and pokayoke instructions.

| # | Part code | Gauge | Color | Width | Length | Qty | Details |
|---|-----------|-------|-------------|-------|--------|-----|--|
| 1 | PCB500 | 500 | Black | 180 | 0,18 | 2 | Front kite block wearing and tearing the gealcoat |
| 2 | PCB500 | 500 | Black | 180 | 0,18 | 2 | Rear kite block wearing and tearing the gealcoat |
| 3 | PCT250 | 250 | Translucent | 60 | 0,40 | 1 | Improve exit and drop of the kite/sliding over the deck |
| 4 | PCB250 | 250 | Black | 150 | 0,80 | 1 | Bottom part of the mast |
| 5 | PML125 | 125 | Ligth Grey | 51 | 1,65 | 2 | Cover both sides of the bowsprit case to improve the sliding |
| 6 | PML125 | 125 | Ligth Grey | 120 | 1,85 | 1 | Wrap the bottom of bowsprit for sliding improvement |
| 7 | PML050 | 50 | Ligth Grey | 19 | 10,00 | 1 | All purposes/rigging |





WRAP & FUSING

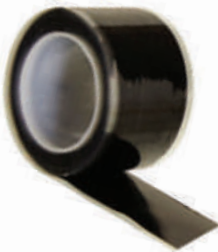


WRAP tapes are self-amalgamating modified polyisobutylene tapes, designed to stretch and stick to itself, forming a very strong and waterproof bond without leaving sticky stains on boat fittings.

Products are available in black or white.

The narrow tape is ideal for rigging, screw terminals, electrics whereas the special wide rolls create a flexible, long lasting, good looking instant welding waterproof mast collar that will not leak.

It is easy to apply and fast and friendly to be removed.



FUSING tape is an affordable and highly functional, silicone, self fusing tape. It resists to moisture, oxygen, and ozone to assure continuous high insulation values and conforms smoothly when wrapped around complex forms and bonds to itself at room temperature within 24 hours.

This tape remains non-tacky to the touch and does not adhere to other surfaces, or substrates and insulates with single wrap, thereby reducing labor time and cost. gamating modified polyisobutylene tapes, designed to stretch
Typical applications:

- rigging, hardware and mast collar
- electrics
- spreader pins ad turnbuckles
- ideal for wrapping parts where build up can occur

WRAP

| Part code | Color | Thickness | | Elongation at break | Width | | Length | |
|-------------------|-------|-----------|------|---------------------|----------|-------|--------|----------|
| | | micron | mil | | mm | in | m | yds |
| PWB500 | Black | 500 | 20 | 700 | 25, 100 | 1, 4 | 2, 10 | 2.2, 11 |
| PWB800 | | 800 | 31.5 | 900 | 150, 250 | 6, 10 | 10 | 11 |
| PWW500 | White | 500 | 20 | 800 | 25, 100 | 1, 4 | 3, 5 | 3.3, 5.5 |
| PWW800 | | 800 | 31.5 | 900 | 150, 250 | 6, 10 | 10 | 11 |
| NEW PWB2MM | Black | 2mm | 80 | | | | | |

FUSING

| | | | | | | | | |
|--------|-------|-----|----|-----|----|---|---|-----|
| PFB500 | Black | 500 | 20 | 500 | 25 | 1 | 3 | 3.3 |
| PFG500 | Grey | | | | | | | |
| PFW500 | White | | | | | | | |
| PFC500 | Clear | | | | | | | |

BOW # is a new range of stickers for bow number and advertising made of bioplastic films that use renewable resources to reduce environmental impact. The solution has been designed for a sustainable end of life while guaranteeing similar performances of traditional products.

At the end of the racing series the sticker removed from the boat can be disposed with the organic waste because made of biodegradable and compostable materials.

Unfortunately some stickers do peel off from the hull while racing because of poor application, water splashes and sprays, then dragged by the waves, currents and tides and generally end up on the beaches or deposit on the bottom of the sea.



The potential damage caused by the stickers released at sea is mitigated by rapid biodegradation.

The marine biodegradation of material used for PROtect **BOW #** takes place even in natural conditions, such as the marine environment, relatively quickly. In fact, samples of were exposed to marine sediments taken from the coastal area and the biodegradation was followed by monitoring the metabolization carried out by bacteria that "digest" the bioplastic and the biodegradation have been achieved relatively quickly, less than 1 year.

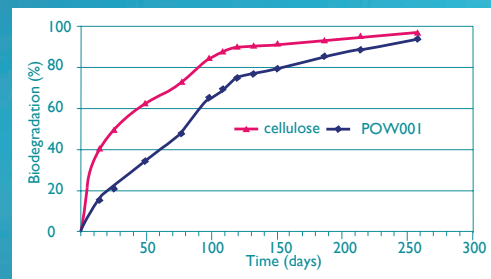
In particular, the biodegradation of the materials tested was more than 90% absolute or relative to a reference material, such as cellulose.

Bioplastic films are suggested for 7/10 days events or shorter.

We offer a turn key solution for racing event organizers by printing, including variable data and die cutting to supply the whole stickers set event.

Typical applications

- Bow numbers
- Hull advertising



For more info on ETV



| Part code | Color | Face | | Adhesive | Liner | | Recommended events |
|-----------|-------|------------------|-----------|----------|----------|-----------|--------------------|
| | | Composition | Thickness | | Type | Thickness | |
| PBWO01 | White | Compostable film | 60 | Acrylic | Glassine | 50 | 7/10 days |

The front is a white film, the adhesive is a permanent acrylic on the cold and the whole set is biodegradable and compostable with OK compost according to the European standards UNI EN 13432. The laboratory tests supervised by the Italian Institute of Plastics (IIP) were verified by Certiquality, as part of the European Commission's "Environmental Technology Verification" (ETV) pilot program

CUSTOM PROJECTS

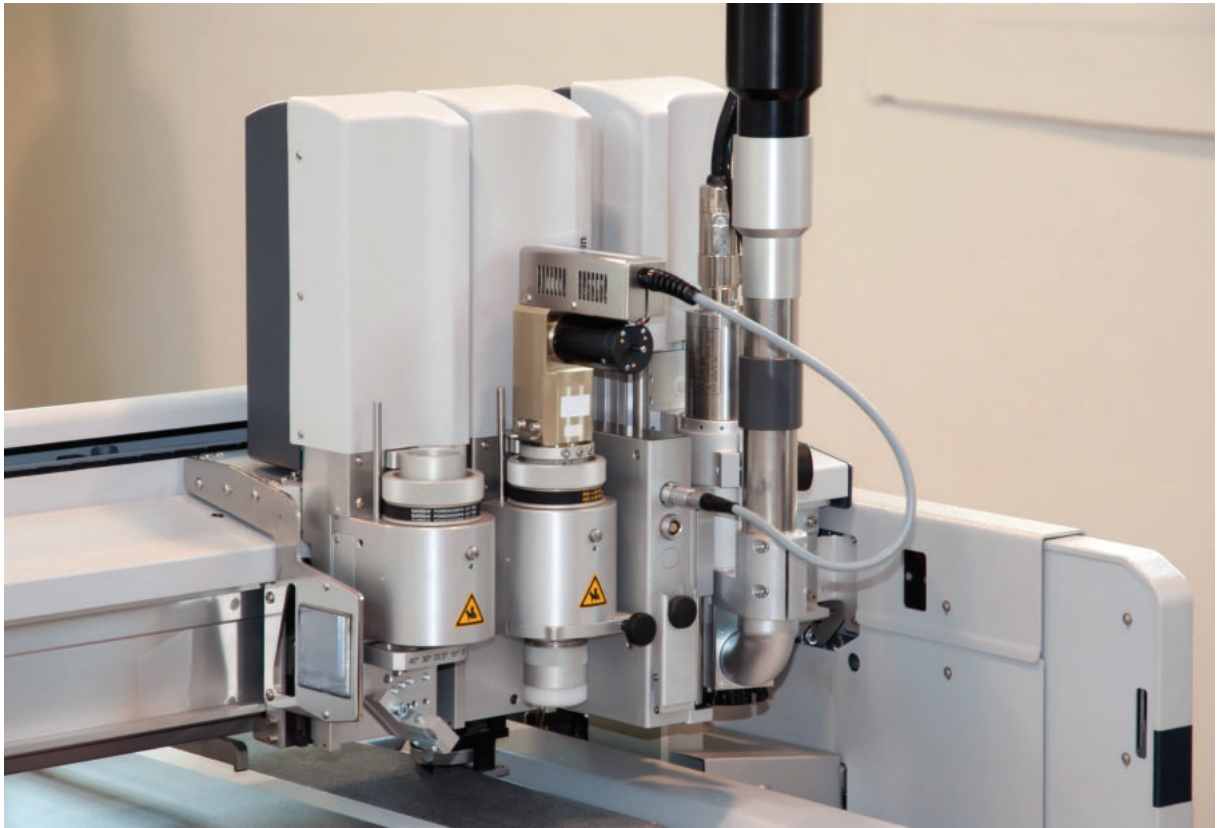
CUSTOM PROJECTS is a new service of PROtect tapes for our demanding clients looking for tailor made solutions.

Mast, boom, spreaders, deck, pad-eyes very often require unique sizes and shapes, we have therefore decided to create a team totally dedicated to focus to convert our products in special parts perfectly matching your needs.

Our team is closely work with you and design the parts you need, eventually modify them after a preliminary test and when approved, we will plot and die cut them using the most advanced technology available on the market.

Each part will be on file for further orders.

CHAFE, SHOCK, SHOCK PSX, SHIELD, MASK (all products on liner) can be cut by **CUSTOM PROJECTS**.



"I'm looking for every little gain while sailing, especially in speed and manoeuvres.

For this reason PROtect tapes has been on my moth since the beginning, knowing that everything runs just smooth when I push the limit is the key to a relaxed race. Thanks PROtect tapes."

[Paul Goodison, Olympic Gold medalist, 2016, 2017 and 2018 Moth World Champion]

PROtect tapes is Official Supplier to Paul Goodison





ROPE & SHRINK

ROPE is a smart and clever idea to identify forever ropes, halyards, running rigging and sheets on-board, into the container or van.

It is a heat shrink polyolefine tube with shrink ratio 2:1, available in different diameters to cover all possible needs.

Simply insert the tube at the end of rope, gently heat the tube using a suitable heat gun, hair dryer or just boiling water and the tube will wrap up it.

The material is writable with a permanent marker pen to have handy some relevant information (use, manufacturer, configuration, sailing hours, etc) and log it using the unique serial number.

Printing of your logo, variable data and other colors on demand.

Typical applications:

- mooring lines
- ropes
- halyards, running rigging and sheets



SHRINK are PTFE heat shrink tubes providing a state of the art method for the application of a tight, protective covering to items that will be subjected to the tough conditions.

It is the ideal method for the application of a tight, protective jacketing to items that ultimately will be subjected to extremes of heat, corrosion, shock, moisture, or other critical environmental conditions.

Provided in the expanded state, heat shrinkable tubing shrink wraps intricate and irregular shapes with a simple application of heat.

The application of heat shrink tubing extends life, increases reliability, and improves performance of the boat hardware.

SHRINK has ratio 4:1. The product requires at least 650°F/340°C to recover.



ROPE

| Part code | Color | Diameter unshrunked | | Diameter shrinked | | Length | |
|-----------|-------|---------------------|-----|-------------------|-----|--------|----|
| | | mm | in | mm | in | mm | in |
| PRW125-2 | White | 12.50 | 1/2 | 6.25 | 1/4 | 100 | 4 |
| PRW190-2 | | 19.50 | 3/4 | 9.75 | 3/8 | | |
| PRW254-2 | | 25.40 | 1 | 12.70 | 1/2 | | |
| PRW125-2S | | 12.50 | 1/2 | 6.25 | 1/4 | | |
| PRW190-2S | | 19.50 | 3/4 | 9.75 | 3/8 | | |
| PRW254-2S | | 25.40 | 1 | 12.70 | 1/2 | | |

SHRINK

| Part code | Color | Diameter unshrunked | | Diameter shrinked | | Min length | |
|-----------|-------|---------------------|-------|-------------------|------|------------|-----|
| | | mm | in | mm | in | m | ft |
| PHST125-4 | Clear | 12.70 | 1/2 | 3.66 | 1/8 | 1 | 3.3 |
| PHST158-4 | | 15.88 | 5/8 | 4.52 | 5/32 | | |
| PHST190-4 | | 19.05 | 3/4 | 5.70 | 3/16 | | |
| PHST222-4 | | 22.23 | 7/8 | 6.20 | 7/32 | | |
| PHST254-4 | | 25.40 | 1 | 7.06 | 1/4 | | |
| PHST317-4 | | 31.75 | 1 1/4 | 8.82 | 5/16 | | |
| PHST381-4 | | 38.00 | 1 1/2 | 10.20 | 3/8 | | |
| PHST508-4 | | 50.80 | 2 | 14.12 | 1/4 | | |



© Davide Piras



SPK is an innovative system developed by PROtect tapes with the support of professional sailors to hoist gennaker and spinnaker much safer and to respect the environment.

Today there are various solutions to pack these sails, some very expensive, others less safe.

In designing the product, special attention has been devoted to the material and the choice went to of buttons made of recycled materials.

They must be applied to the luff tape of the sails.

They can be glued, sewn (SPK002 designed for sewing by sailmakers) or screwed (SPK001MS suitable for manual sewing only). All methods are very simple, no special skills required.

Additionally, the characteristic V-shaped groove is capable of retaining the thread till the sail is dropped. At first the end of the string is wrapped around the button then around the compacted sail and finally around the button again.

The operation is very simple and can be performed by one person only.

There are no more knots, reducing the time required to compact the sail.

When the sail is set and threads broken, the sail gives all its propulsive force.

The broken threads are retained from the throat of each button, without falling into the sea, whether of wool or biodegradable and compostable material like our yarn ball SPK003; the crew will then remove them when the sail is lowered or at the end of the race.

Benefits:

- all materials are recycled and recyclable
- increased reliability and lower cost
- environmental friendly use
- less dexterity is required
- no need for help to compact the sail
- compliance to the regulations of our sport and the code of ethics
- standardization of the packing process
- possibility to pack only one portion of the sail
- reduction of the sail preparation time



| Part code | Breaking load | | Lenght | | Recommended boat length |
|---------------------|---------------|-----|--------|-----|-------------------------|
| | Kg | Lbs | m | yds | |
| SPK003S | 3.0 | 6.6 | 100 | 110 | up to 70' (21m) |
| SPK003SX | 3.0 | 6.6 | 650 | 711 | up to 70' (21m) |
| SPK003M NEW | 4.5 | 9.9 | 80 | 88 | over 70' (21m) |
| SPK003MX NEW | 4.5 | 9.9 | 500 | 550 | over 70' (21m) |

| Part code | Flat surface for sewing | Double sided adhesive | Screw/nut | Hole for screw/nut | Sewing holes | Description | Qty/pack |
|-----------|-------------------------|-----------------------|-----------|--------------------|--------------|-------------------|----------|
| | | | | | | | |
| SPK001 | ● | ● | ● | ● | | Most flexible kit | 8 |
| SPK001MS | | ● | | ● | | Manual sewing | 8 |
| SPK002 | ● | | | | | Sailmakers | 100 |



"We used PROtect tapes and they always performed exceptionally well. It's great to work with a company that will develop products to suit your needs. Thanks PROtect tapes."
[Don Cowie, Momo]



SKID series are anti slip tapes designed for racing yachts and boats. Series 80 and 60 are solutions when heavy duty slip resistance is required because made of tough, durable, special stones capable to last longer, embedded in extremely strong, all weather polymer substrate coated with a powerful, high bond rubber pressure sensitive adhesive and liner. Series 45 and 54 are anti slip resilient tape with low and heavy embossed anti-slip rubber coated PVC that has been engineered with an aggressive acrylic adhesive and liner. Light weight, easy installation, conformability and durable anti slip qualities. Available in a wide range of colors to match you needs. The offer is wide: narrow rolls and jumbo rolls that can be cut to size on site or easily create templates specifically for your boat.

NIGHT series are photolumiscent adhesive tapes suitable for signage.

Typical applications:

- boat deck and cockpit
- stairs and ladders
- any slippery surface that is walked on

SKID & NIGHT

| Part code | Color | | | | | | | | | | | | | Width | | Length | | | |
|---------------------------------|--------|--------|------------|--------|--------|--------|--------|--------|--------|--------|------------|--------|------------------|-------|-------|--------|-----|-------|-----|
| | Black | Grey | Light grey | White | Green | Orange | Red | Brown | Clear | Blue | Light Blue | Yellow | Photoluminescent | mm | in | m | yds | | |
| | | | | | | | | | | | | | day | night | | | | | |
| 80 | PAB080 | | | | | | | | | | | | | 51 | 2 | 3 | 3.3 | | |
| | | | | | | | | | | | | | 1219 | 48 | 18.29 | | | 20 | |
| 60 | PAB060 | PAG060 | PAL060 | PAW060 | PAV060 | PAO060 | PAR060 | PAN060 | PAC060 | PAU060 | PAE060 | PAY060 | PAP060 | 51 | 2 | | | | |
| | | | | | | | | | | | | | | 1067 | 42 | | | | |
| 30 Smooth | | | | | | | | | PAC030 | | | | | 51 | 2 | 10 | 11 | | |
| 54 Resilient | PAB054 | PAG054 | | PAW054 | | | | | PAC054 | | | | | | | | | 3 | 3.3 |
| 46 Coarse resilient | PAB046 | PAG046 | | PAW046 | | | | | PAC046 | | | | | | | | | 18.29 | 20 |
| 227 Photoluminescent | | | | | | | | | | | | | PNP227 | | | | | | |
| 557 Premium Photoluminescent | | | | | | | | | | | | | PNP557 | | | | | 18.29 | 20 |

WING

WING is all you need for wingsails.

WINGLAR™ is a special membrane available in different gauges, all very strong, tough, clear or pigmented, biaxially oriented, heat shrinkable, printable film. The films have high shrink force for superior bundling capability, high tear, impact and abrasion resistance, high gloss, clarity, excellent printability and UV stability.

A strong membrane is useless without an equally strong double sided tape with carrier and asymmetrical acrylic adhesive to perfect match the properties of the membrane and the carbon fiber frame.

The final seamless touch is given by a clear, thin layer to cover and protect the edges of the film.



Typical applications:

- Wing sails
- Cross beams

MEMBRANES

| Part code | Color | Thickness | | Width | | Applications |
|-----------|-------|-----------|------|-------|------|--------------------------------|
| | | micron | mil | m | ft | |
| PWC013 | Clear | 13 | 0.50 | 1.6 | 5.25 | Small wings |
| PWC016 | | 16 | 0.65 | | | |
| PWC019 | | 19 | 0.75 | | | |
| PWC025 | | 25 | 1.00 | | | |
| PWC032 | | 32 | 1.25 | | | |
| PWC038 | | 38 | 1.50 | | | |
| PWC050 | | 50 | 2.00 | 3.3 | 10.8 | Cross beam of smaller than 40' |
| PWC075 | | 75 | 3.00 | | | Cross beam of 40' and above |
| | | | | | | AC45/48 and bigger |

Available pigmented as well, MOQ applies. PWC075 was approved by ACM Committee for the 35th America's Cup

SINGLE AND DOUBLE SIDED ADHESIVE TAPES

| Part code | Carrier | Color | Adhesive | Thickness | | | | Width | | Length | | Purpose | Notes |
|-----------|-----------|-------|----------|-----------|-----|----------|------|------------|-----------|--------|-----|--|----------------------------|
| | | | | carrier | | adhesive | | mm | in | m | ft | | |
| | | | | micron | mil | micron | mil | | | | | | |
| PWD04739 | Polyester | Clear | Acrylic | 25 | 1.0 | 88 | 3.45 | 19, 25, 50 | 3/4, 1, 2 | 50 | 164 | Link between the membrane and the wing | Double sided adhesive tape |
| PWD04839 | | | | 13 | 0.5 | 95 | 3.75 | | | | | | |
| PWD01357 | | | | 13 | 0.5 | 38 | 1.50 | 19, 25 | 3/4, 1 | 55 | 180 | | |
| PWS01328 | | | | 23 | 0.9 | 37 | 2.36 | 50, 100 | 1, 2 | 66 | 164 | | |

On PWD series the adhesive quantity is per side



SPIRAL & HANG

SPIRAL are solutions to protect the composite standing rigging, frequently damaged by jib and gennaker sheets increasing the risk of equipment failure and exponential cost for replacement.

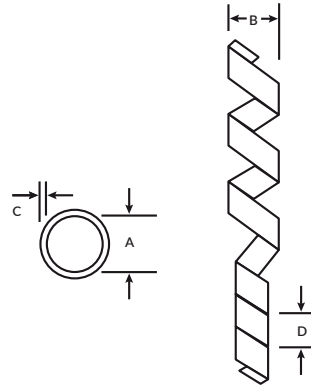
The product is spiral cut cable wrap made of PTFE, resistant to abrasion, expandable and applicable on standing rigging as it is or wrapped by MASK for more durable protection.

Typical applications:

- Standing rigging (V1, D1, stays, etc)
- Lifelines

| Part code | Color | Internal Diameter A | | Max Diameter B | | Wall C | | Pitch of helical cut D | |
|-----------|------------|------------------------|-------|-------------------|-------|-----------|-------|---------------------------|-----|
| | | mm | in | mm | in | mm | in | mm | in |
| PRSO318 | Tranlucent | 1.59 | 1/16 | 12.70 | 1/2 | 0.76 | 0.030 | 6.35 | 1/4 |
| PRSO476 | | 3.18 | 1/8 | 25.40 | 1 | | | 6.35 | 1/4 |
| PRSO635 | | 4.76 | 3/16 | 50.80 | 2 | | | 9.53 | 3/8 |
| PRSO794 | | 6.35 | 1/4 | 63.50 | 2 1/2 | | | 9.53 | 3/8 |
| PRSO953 | | 7.94 | 5/16 | 76.20 | 3 | 11.11 | 7/16 | | |
| PRS1270 | | 11.11 | 7/16 | 101.60 | 4 | 14.29 | 9/16 | | |
| PRS1588 | | 14.29 | 9/16 | 127.00 | 5 | 15.88 | 5/8 | | |
| PRS1905 | | 17.46 | 11/16 | 152.40 | 6 | 0.81 | 0.032 | 22.23 | 7/8 |
| PRS2540 | | 23.81 | 15/16 | 203.20 | 8 | 1.02 | 0.040 | 25.40 | 1 |

The length required is equal to the ratio between the ID and the cable diameter. If the cable is 5mm and SPIRAL is PRSO476, 1 meter will cover 0.64m. ID of PRSO476 is 3.18, therefore $3.18 : 5 = 0.64$. If the cable is 7mm, PRSO476 will cover just 0.45m because $3.18 : 7 = 0.45$. The best ratio is between 0.80 and 0.40.



HANG is a gel grip tape made of PU and PU nano gel you can apply to the kitchen, bulkhead, toilet, navigation table and other places to hold and keep in place tools, pens, remote control, camera, phones, keys, mirrors and so on without slipping.

Washable, reusable, no adhesive residue.

| Part code | Color | Thickness | | Width | | Length | |
|---------------|-------|-----------|-----|-------|-----|--------|-----|
| | | mm | mil | mm | in | m | yds |
| PGC2000030050 | Clear | 2 | 80 | 30 | 1.2 | 5 | 5.5 |
| PGC2000050050 | | | | 50 | 2 | | |





"PROtect tapes have worked with us over many years in forming solutions to the vast range of chafe problems experienced on maxi yachts. They have been helpful in the extreme. Always prompt with supply and very amenable to adapting their products to suit our needs. We rely on their products extensively."
[Mike Atkinson, Open Season]





COMPOSITE are PTFE tapes either glass coated or plain suitable for mold release in demanding composite constructions.

Tapes and adhesive (silicon or acrylic) can withstand the most challenging requirements and extreme operating conditions.

The thickness range is wide matching applications requiring excellent release, dimensional and superior thermal stability.

Release of composite part from the tooling on ejection is also key benefit of a properly designed mold and release characteristics normally relate to the coefficient of friction of the molding surfaces and release tapes play an important role.

In fact, the lowest coefficient of friction is not a material property, but a result of the contact system therefore influenced by the hardness, thickness, uniformity and smoothness of the surfaces, even more critical for small or negative draft angles.

Typical applications:

- male or female mold release

| Part code | Color | Adhesive | Liner | Gauge | | | | Adhesion | | Elongation at break | Width | | Length | |
|-----------|-------|----------|-------|--------|-----|----------|-----|----------|-------|---------------------|------------|-------------|--------|----|
| | | | | film | | adhesive | | N/cm | oz/in | | % | mm | in | m |
| | | | | micron | mil | micron | mil | | | | | | | |
| PMF076L | Brown | Silicon | Yes | 76 | 3 | 51 | 2 | 4.37 | 40 | 3 | up to 1000 | up to 39.37 | 33 | 36 |
| PMF125L | | | | 125 | 5 | | | | | | | | | |
| PMF150L | | | | 150 | 6 | | | | | | | | | |
| PMC050 | Grey | | -- | 50 | 2 | 38 | 1.5 | 3.28 | 30 | 140 | 25 | 1 | | |
| PMC050L | | | Yes | | | | | | | | 51 | 2 | | |
| PMC076 | | | -- | 76 | 3 | | | | | | 102 | 4 | | |
| PMC076L | | | Yes | | | | | | | | min 7 | min 1/4 | | |
| | | | | | | | | | | max 564 | max 21.5 | | | |

PMF and PMC series available with acrylic adhesives too.

DUCT & SEAL & NO LEAK

DUCT tapes are a high quality general purpose colored tapes made from polyethylene-coated cloth coated with a natural rubber and synthetic resin adhesive system.

Tapes will conform well to irregular surfaces and will not twist or curl during application, hand tearable and tears evenly across the web of the cloth and provides excellent water and abrasion resistance.

Available in the standard silver and seven other colors.

It can be used as a quality moisture and waterproof tape and for easy and quick fix, reinforcing, color coding, ductwork sealing and seaming.

SEAL are tapes are specialty masking tapes combining LDPE films and HDPE cloth coated with acrylic adhesive. They are hand tearable, resistant, residue free and highly weather resistant and waterproof, free residual after removal. These features offer many solutions for masking, protection, holding, splicing, seaming, sealing. Since they does not leave residue on floors and surfaces, it makes maintenance operation easier.

NO LEAK is similar to SEAL but especially designed for airtightening and waterproofing. Permanent bonding.

Typical applications:

- moisture, waterproof and airtightening
- reinforcing
- color coding
- sealing
- seaming

DUCT

| Part code | Color | Adhesive | Thickness | | Width | | Length | |
|-----------|--------|----------|-----------|-----|-------|----|--------|-----|
| | | | micron | mil | mm | in | m | yds |
| PDS290 | Silver | Rubber | 90 | 3.5 | 50 | 2 | 10 | 11 |
| PDW290 | White | | | | | | | |
| PDB290 | Black | | | | | | | |
| PDR290 | Red | | | | | | | |
| PDY290 | Yellow | | | | | | | |
| PDO290 | Orange | | | | | | | |
| PDL290 | Blu | | | | | | | |
| PDG290 | Green | | | | | | | |



SEAL

| Part code | Color | Adhesive | Thickness | | Width | | Length | |
|-----------|-------|----------|-----------|-----|-------|----|--------|-----|
| | | | micron | mil | mm | in | m | yds |
| PEW190 | White | Acrylic | 190 | 7.5 | 50 | 2 | 50 | 55 |
| PEC190 | Clear | | | | | | | |
| PEG190 | Green | | | | | | | |

NO LEAK

| Part code | Color | Adhesive | Thickness | | Width | | Length | |
|-----------|-------|----------|-----------|------|-------|----|--------|---------|
| | | | micron | mil | mm | in | m | yds |
| PNR220 | Black | Acrylic | 220 | 8.86 | 100 | 4 | 2.10 | 2.2, 22 |





INTERIOR & EXTERIOR & HAUL



INTERIOR is the ideal solution for protection of delicate surfaces such as the boat interiors whether in construction, delivery, boat maintenance or racing. The product is a foam PE film laminated with LDPE and a removable acrylic adhesive.

The low grammage adhesive is strong enough to guarantee a good adhesion and at the same time the low tack do not damage the surfaces protected; additionally no stain or adhesive residual once removed.

The product available is in the 2050 version with extremely low tack for very delicate surfaces, alcantare and leather.

The film is conformable therefore suitable to protect uneven and round surfaces, very easy to apply.

EXTERIOR is a clear polyolefins UV treated with low tack acrylic adhesive for the protection of the deck, hull and any part exposed to atmospheric agents and easy peel.

It is suitable for the protection of surface finishes from dirt and scratches and available in two versions with medium and low tack.

HAUL are small triangles adhesive to be applied on the hull to locate the propeller and speed sensors for the correct positioning of the bands during hauling and launching. Available in kit of four pieces red (PMK031R) and black (PMK031B).



INTERIOR

| Part code | Color | Adhesive | Gauge | | | | Adhesion | | Elongation at break | Width | | Length | |
|-----------|-------|----------|--------|-----|----------|-----|----------|-------|---------------------|----------------|------------|--------|------|
| | | | film | | adhesive | | N/cm | oz/in | | mm | in | m | yds |
| | | | micron | mil | micron | mil | | | % | | | | |
| PIW2000 | White | Acrylic | 2000 | 80 | 10 | 0.4 | 1.0 | 9.1 | <200 | 250, 625, 1250 | 10, 25, 50 | 25 | 27,3 |
| PIW2050 | | | 1100 | 43 | | | 0.4 | 3.6 | | | | 50 | 54,7 |



EXTERIOR

| | | | | | | | | | | | | | |
|--------|-------|---------|----|------|----|-----|-----|-----|------|----------|-------|-----|-----|
| PEX200 | White | Acrylic | 80 | 3.15 | 10 | 0.4 | 0.8 | 9.1 | >300 | 150, 300 | 6, 12 | 500 | 550 |
|--------|-------|---------|----|------|----|-----|-----|-----|------|----------|-------|-----|-----|



PROtect tapes®
Via Pietrarubbia, 32D
47921 Rimini - Italy



T +39 0541 1646823
M +39 339 8867008

www.protect-tapes.com
info@protect-tapes.com

Values presented have been determined by standard test methods and are average values not to be used for specification purposes.
Our recommendations on the use of our products are based on tests believed to be reliable but we would advise you to conduct your own test to determine their suitability for your applications.
This is because we cannot accept any responsibility or liability direct or consequential for loss or damages as results of our recommendations.
PROtect tapes, WINGLAR, SPK and Pat'H logos are registered trademark of Pietro Parmeggiani S.r.l.

2021 ENG 1.0