

OPF series

OPF SERIES

New by Antal the One Piece Frame block, the block without pins or screws, it is a light and strong solution: simply a hard black anodized and teflon coated aluminium frame in one piece.

A complete range from 50 to 140 mm sheaves in single, double, triple, fiddle, and deck versions, for webbing or shackle connection.

Sizes are based on the range of HR shackles available and on their safe working load (SWL).

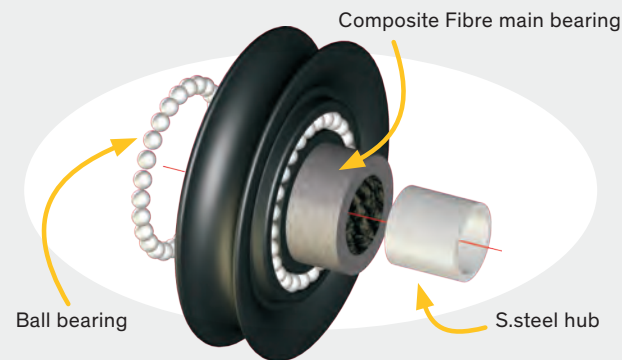


MOD. 01001

↓ THE COMPOSITE FIBRE SHEAVE

The resin (aluminium on larger mod) sheave runs on the main Composite Fibre bearing and on a ground s.steel hub: low friction highloads, no lubricant required.

The self-captive side ball bearing reduces the friction and makes disassembling, cleaning and maintenance very easy. Sheaves are supplied with the s.steel hub, they are available separately.



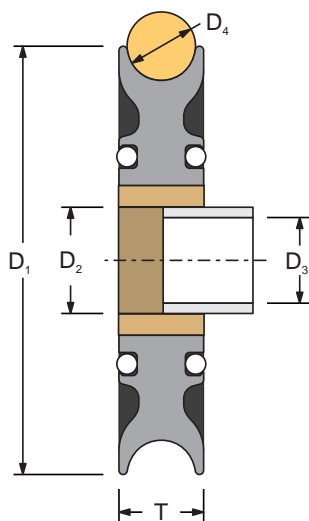
↓ THE HR SWIVEL HEAD

Made in high resistance s.steel, with three positions: swivelling head, longitudinal lock and transversal lock. HR shackles **included**.



↓ THE ONE PIECE FRAME

The one-piece aluminium extruded body is the strongest and lightest solution, no assembling pin rivets or screws and nuts. CNC machined polished, hard black anodized and teflon coated.



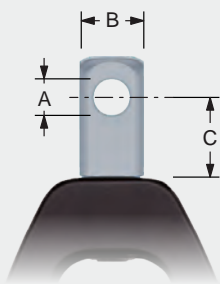
SHEAVE	D ₁ mm	T mm	MATERIAL	D ₂ mm	D ₃ mm	D ₄ mm	SWL kg	WEIGHT g
04919F	48	18	resin	20	16	15	2200	43
05114M*	50	14	resin	12	8	10	600	30
06016F	60	16	resin	15	12	12	800	46
06421F	64	21	resin	25	20	16	3500	78
07016F	70	16	resin	15	12	12	1300	66
08019F	80	19	resin	20	16	14	2200	98
10021A	100	21	aluminium	25	20	16	3500	164
12025A	120	25	aluminium	30	24	18	5000	420
14025A	140	25	aluminium	40	32	20	7000	580

* Without Composite Fibre main bearing

SPECIAL HEADS

On request Antal blocks are supplied with special head: long head or Wichard HR snap shackle.

LONG HEAD



MODEL	SHEAVE Ø mm	A mm	B mm	C mm	B.B. CAR SIZE mm
J	60	6	12	12	100
J1	80	8	14.5	15	150
J2	80	10	18	17	190
J1	100			19	
J2	100			25	260

For stand-up connection of ball bearing cars (page 130, 134-137).
To order the block with this special long swivel head, add **J** to the block model code.

SNAP SHACKLE*



MODEL	SHEAVE Ø mm	SWL** kg	BL** kg	A mm	L mm
SN	50	700	1370	16	45
	60				
	70	960	2000	16	45
	80	1280	3600	21	60
	100	2800	7000	26	80

* Snap shackle → this solution is available for single and fiddle blocks only. To order the block with this special snap shackle head, add **SN** to the block model code. AISI 316 snap shackle for size 50 and 60, Wichard HR snap shackles for all the others.

** **SWL** (Safe Working Load) and **BL** (Breaking Load) declared by the manufacturers.

CAM-CLEAT ASSEMBLY



MODEL	CAM CLEAT ASSEMBLY	SHEAVE Ø mm	WEIGHT kg
C	YBA049	50	0.08
	YBA052	60	0.13
	YBA056	70	0.15

It is available for all the 50, 60 and 70 mm diameter models. Adjustable in 3 positions.
To order the block with cam-cleat, add **C** to the block model code.

Amel 50 – Ph. R. Christol



Antal blocks of the OPF series are supplied with shackles: AISI 316 on size 50 and 60 and HR on size 70 and more.
For the breaking (**BL**) and the safe working loads (**SWL**) of the shackles, consider the tables on page 203.

Blocks 50

50 mm SHEAVE for 10 mm LINE – SAFE WORKING LOAD = 600 kg



MOD. 00501

SWIVEL BLOCK
WEIGHT* – 90 g
SWL – 600 kg • SHACKLE – 5 mm



MOD. 00503

DOUBLE SHEAVE
WEIGHT* – 169 g
SWL – 800 kg • SHACKLE – 6 mm



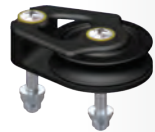
MOD. 00505

TRIPLE SHEAVE
WEIGHT* – 225 g
SWL – 800 kg • SHACKLE – 6 mm



MOD. 00507

SINGLE FIDDLE
WEIGHT* – 122 g
SWL – 600 kg • SHACKLE – 5 mm



MOD. 00511

FOOT BLOCK
WEIGHT** – 71 g • SWL – 600 kg
SCREWS – 2×Ø6 mm (included)



MOD. 00512

DOUBLE FOOT
WEIGHT** – 141 g • SWL – 600 kg
SCREWS – 3×Ø6 mm (included)



MOD. 00516

VERTICAL FIX
WEIGHT** – 75 g • SWL – 600 kg
SCREWS – 2×Ø6 mm (included)



MOD. 00517

UP-DOWN
WEIGHT** – 89 g • SWL – 600 kg
SCREWS – 2×Ø6 mm (included)



MOD. 00502

BECKET BLOCK
WEIGHT* – 104 g
SWL – 600 kg • SHACKLE – 5 mm



MOD. 00504

DOUBLE BECKET
WEIGHT* – 184 g
SWL – 800 kg • SHACKLE – 6 mm



MOD. 00506

TRIPLE BECKET
WEIGHT* – 240 g
SWL – 800 kg • SHACKLE – 6 mm



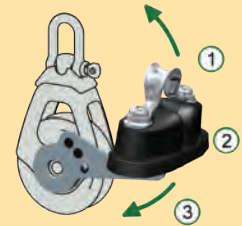
MOD. 00508

BECKET FIDDLE
WEIGHT* – 136 g
SWL – 600 kg • SHACKLE – 5 mm

↓ CAM CLEAT

With 3 different positions for single, double and triple. For blocks with cleat add **C** to the block model code.

SWL – 100 kg
WEIGHT + 80 g



In the OPF 50 series sheaves are riveted and not removable.



* With shackle
** Without screws

Full scale pic →



WEB → For line connection



MOD. 00509

SIMPLE WEB
WEIGHT* – 64 g
SWL – 600 kg



MOD. 00510

BECKET WEB
WEIGHT* – 78 g
SWL – 600 kg



MOD. 00507/9

SINGLE FIDDLE WEB
WEIGHT* – 85 g
SWL – 600 kg



MOD. 00508/9

BECKET FIDDLE WEB
WEIGHT* – 100 g
SWL – 600 kg



MOD. 00513

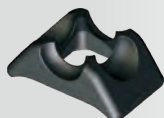
BLOCK U-BOLT
WEIGHT – 129 g • SWL – 500 kg
SCREWS – 2xØ5 mm (included)



MOD. 7105

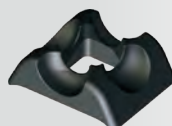
Page 203 → more infos

↓ Swivel head locks and shackles are always **included**, but they are available separately. ↓



MOD. Y-B0746

Longitudinal or transversal head lock for single blocks.



MOD. Y-B0747

Longitudinal or transversal head lock for double and triple blocks.



MOD. 005SS

5 mm SHACKLE (AISI316)
WEIGHT – 15 g • SWL – 600 kg
For single blocks



MOD. 006SS

6 mm SHACKLE (AISI316)
WEIGHT – 26 g • SWL – 800 kg
For double and triple blocks



CNSM, LaCinquanta 2020 – Ph. A. Carloni

Blocks 60

60 mm SHEAVE for 12 mm LINE – SAFE WORKING LOAD = 800 kg



MOD. 00601

SWIVEL BLOCK
WEIGHT* – 0.16 kg
SWL – 800 kg • SHACKLE – 6 mm



MOD. 00603

DOUBLE SHEAVE
WEIGHT* – 0.31 kg
SWL – 1300 kg • SHACKLE – 8 mm



MOD. 00605

TRIPLE SHEAVE
WEIGHT* – 0.41 kg
SWL – 1300 kg • SHACKLE – 8 mm



MOD. 00607

SINGLE FIDDLE
WEIGHT* – 0.21 kg
SWL – 800 kg • SHACKLE – 6 mm



MOD. 00608

BECKET FIDDLE
WEIGHT* – 0.23 kg
SWL – 800 kg • SHACKLE – 6 mm



MOD. 00609

SIMPLE WEB
WEIGHT* – 0.10 kg
SWL – 800 kg • For line connection



MOD. 00610

WEB BECKET
WEIGHT* – 0.12 kg
SWL – 800 kg • For line connection



MOD. 00602

BECKET BLOCK
WEIGHT* – 0.18 kg
SWL – 800 kg • SHACKLE – 6 mm



MOD. 00604

DOUBLE BECKET
WEIGHT* – 0.33 kg
SWL – 1300 kg • SHACKLE – 8 mm



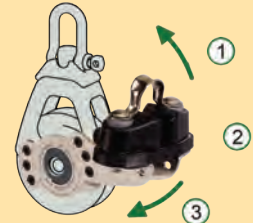
MOD. 00606

TRIPLE BECKET
WEIGHT* – 0.43 kg
SWL – 1300 kg • SHACKLE – 8 mm

↓ CAM CLEAT

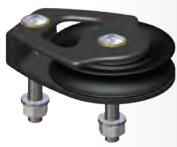
With 3 different positions for single, double and triple. For blocks with cleat add C to the block model code.

SWL – 150 kg
WEIGHT + 0.13 kg



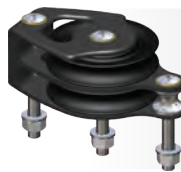
* With shackle
** Without screws

Full scale pic →



MOD. 00611

FOOT BLOCK
WEIGHT** – 0.13 kg • SWL – 800 kg
SCREWS – 2xØ6 mm (included)



MOD. 00612

DOUBLE FOOT
WEIGHT** – 0.23 kg • SWL – 800 kg
SCREWS – 3xØ6 mm (included)



MOD. 00616

VERTICAL FIX
WEIGHT** – 0.14 kg • SWL – 800 kg
SCREWS – 2xØ6 mm (included)



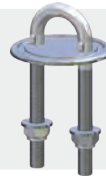
MOD. 00617

UP-DOWN
WEIGHT** – 0.18 kg • SWL – 800 kg
SCREWS – 2xØ6 mm (included)



MOD. 00613

BLOCK U-BOLT
WEIGHT – 0.22 kg • SWL – 800 kg
SCREWS – 2xØ6 mm (included)



MOD. 7106

Page 203 → more infos



MOD. 00614

BLOCK PAD-EYE
WEIGHT – 0.26 kg • SWL – 800 kg
SCREWS – 2xØ6 mm (included)



MOD. 7206

Page 200 → more infos



MOD. 00615

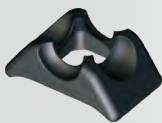
BLOCK SCREWED
WEIGHT – 0.32 kg • SWL – 800 kg
SCREWS – 2xØ6 mm (included)



MOD. 7306

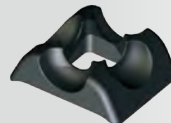
Page 201 → more infos

↓ Swivel head locks and shackles are always **included**, but they are available separately. ↓



MOD. Y-B0748

Longitudinal or transversal head lock for single blocks.



MOD. Y-B0749

Longitudinal or transversal head lock for double and triple blocks.



MOD. 005SS

6 mm SHACKLE (AISI316)
WEIGHT – 26 g • SWL – 800 kg
For single blocks



MOD. 006SS

8 mm SHACKLE (AISI316)
WEIGHT – 62 g • SWL – 1300 kg
For double and triple blocks



Blocks 70

70 mm SHEAVE for 12 mm LINE – SAFE WORKING LOAD = 1300 kg



MOD. 00701

SWIVEL BLOCK
WEIGHT* – 0.20 kg
SWL – 1300 kg • HR SHACKLE – 6 mm



MOD. 00702

BECKET BLOCK
WEIGHT* – 0.22 kg
SWL – 1300 kg • HR SHACKLE – 6 mm



MOD. 00703

DOUBLE SHEAVE
WEIGHT* – 0.38 kg
SWL – 2200 kg • HR SHACKLE – 8 mm



MOD. 00704

DOUBLE BECKET
WEIGHT* – 0.40 kg
SWL – 2200 kg • HR SHACKLE – 8 mm



MOD. 00705

TRIPLE SHEAVE
WEIGHT* – 0.50 kg
SWL – 2200 kg • HR SHACKLE – 8 mm



MOD. 00706

TRIPLE BECKET
WEIGHT* – 0.52 kg
SWL – 2200 kg • HR SHACKLE – 8 mm



MOD. 00707

SINGLE FIDDLE
WEIGHT* – 0.26 kg
SWL – 1300 kg • HR SHACKLE – 6 mm



MOD. 00708

BECKET FIDDLE
WEIGHT* – 0.28 kg
SWL – 1300 kg • HR SHACKLE – 6 mm



MOD. 00709

SIMPLE WEB
WEIGHT – 0.14 kg
SWL – 1300 kg • For line connection



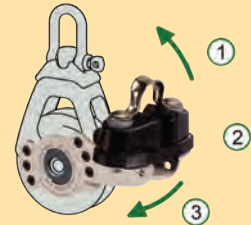
MOD. 00710

WEB BECKET
WEIGHT – 0.16 kg
SWL – 1300 kg • For line connection

↓ CAM CLEAT

With 3 different positions for single, double and triple. For blocks with cleat add C to the block model code.

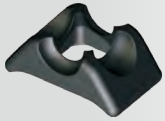
SWL – 150 kg
WEIGHT + 0.15 kg



* With shackle
** Without screws

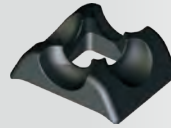
Full scale pic ↑

↓ Swivel head locks and shackles are always **included**, but they are available separately. ↓



MOD. Y-B0748

Longitudinal or transversal head lock for single blocks.



MOD. Y-B0749

Longitudinal or transversal head lock for double and triple blocks.



MOD. 006HR

6 mm HR SHACKLE (AISI316)
WEIGHT – 26 g • SWL – 1300 kg
For single blocks

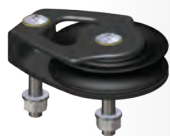


MOD. 008HR

8 mm HR SHACKLE (AISI316)
WEIGHT – 62 g • SWL – 2200 kg
For double and triple blocks

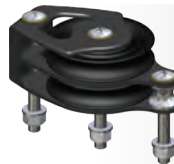


Cima Boats, Wevo650 – M. Sericano, Ph. B. Pitscheider



MOD. 00711

FOOT BLOCK
WEIGHT** – 0.16 kg • SWL – 1300 kg
SCREWS – 2×Ø8 mm (included)



MOD. 00712

DOUBLE FOOT
WEIGHT** – 0.26 kg • SWL – 1300 kg
SCREWS – 3×Ø8 mm (included)



MOD. 00716

VERTICAL FIX
WEIGHT** – 0.18 kg • SWL – 1300 kg
SCREWS – 2×Ø8 mm (included)



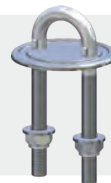
MOD. 00717

UP-DOWN
WEIGHT** – 0.20 kg • SWL – 1300 kg
SCREWS – 2×Ø8 mm (included)



MOD. 00713

BLOCK U-BOLT
WEIGHT – 0.32 kg • SWL – 1300 kg
SCREWS – 2×Ø8 mm (included)



MOD. 7108

Page 203 → more infos



MOD. 00714

BLOCK PAD-EYE
WEIGHT – 0.41 kg • SWL – 1300 kg
SCREWS – 4×Ø6 mm (included)



MOD. 7208

Page 200 → more infos



MOD. 00715

BLOCK SCREWED
WEIGHT – 0.75 kg • SWL – 1300 kg
SCREWS – 4×Ø6 mm (included)



MOD. 7308

Page 201 → more infos

Blocks 80

80 mm SHEAVE for 14 mm LINE – SAFE WORKING LOAD = 2200 kg



MOD. 00801

SWIVEL BLOCK
WEIGHT* – 0.34 kg
SWL – 2200 kg • HR SHACKLE – 8 mm



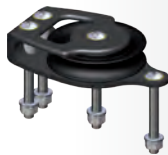
MOD. 00809

SIMPLE WEB
WEIGHT – 0.22 kg
SWL – 2200 kg • For line connection



MOD. 00807

SIMPLE FIDDLE
WEIGHT* – 0.44 kg
SWL – 2200 kg • HR SHACKLE – 8 mm



MOD. 00811

FOOT BLOCK
WEIGHT** – 0.29 kg • SWL – 2200 kg
SCREWS – 4xØ8 mm (included)



MOD. 00812

DOUBLE FOOT
WEIGHT** – 0.57 kg • SWL – 2200 kg
SCREWS – 4xØ8 mm (included)



→ **MOD. 7110** (page 203)

← **MOD. 00813**

BLOCK U-BOLT
WEIGHT – 0.54 kg • SWL – 2200 kg
SCREWS – 2xØ10 mm (included)



→ **MOD. 7210** (page 200)

← **MOD. 00814**

BLOCK PAD-EYE
WEIGHT – 0.61 kg • SWL – 2200 kg
SCREWS – 4xØ8 mm (included)



→ **MOD. 7310** (page 201)

← **MOD. 00815**

BLOCK SCREWED
WEIGHT – 0.93 kg • SWL – 2200 kg
SCREWS – 4xØ8 mm (included)



MOD. 00816

VERTICAL FIX
WEIGHT** – 0.27 kg • SWL – 2200 kg
SCREWS – 2xØ10 mm (included)



MOD. 00802

BECKET BLOCK
WEIGHT* – 0.38 kg
SWL – 2200 kg • HR SHACKLE – 8 mm



MOD. 00810

WEB BECKET
WEIGHT – 0.26 kg
SWL – 2200 kg • For line connection



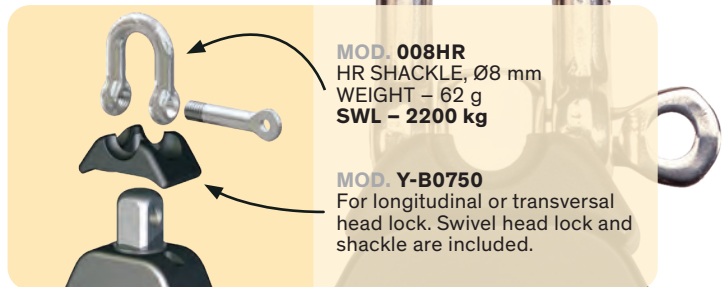
MOD. 00808

BECKET FIDDLE
WEIGHT* – 0.48 kg
SWL – 2200 kg • HR SHACKLE – 8 mm



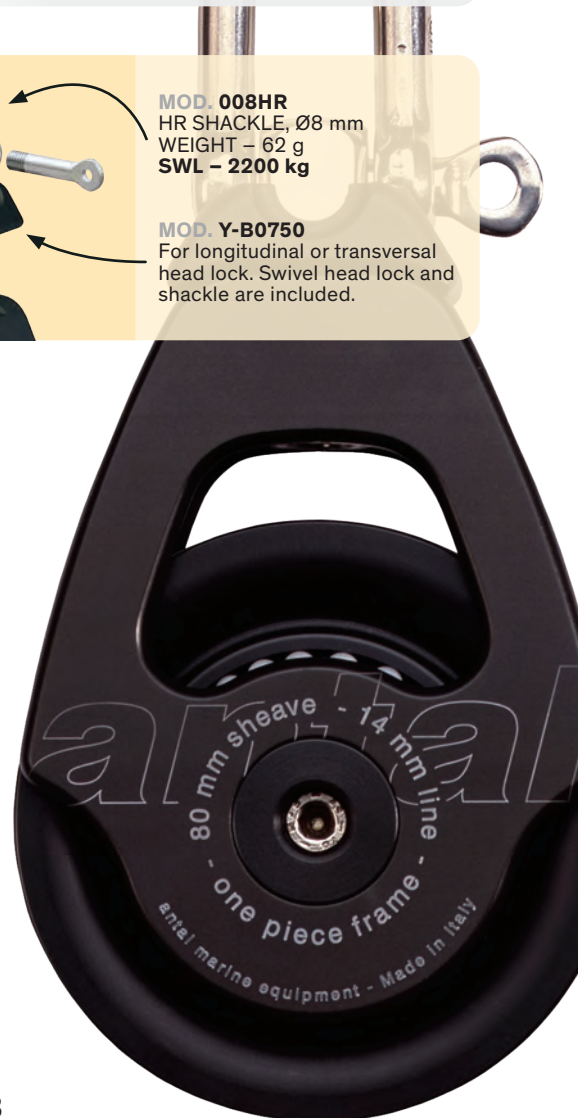
MOD. 00803

DOUBLE BLOCK
WEIGHT* – 0.54 kg
SWL – 3500 kg • HR SHACKLE – 10 mm



MOD. 008HR
HR SHACKLE, Ø8 mm
WEIGHT – 62 g
SWL – 2200 kg

MOD. Y-B0750
For longitudinal or transversal head lock. Swivel head lock and shackle are included.



Full scale pic →

* With shackle
** Without screws

Blocks 100

100 mm SHEAVE for 16 mm LINE – SAFE WORKING LOAD = 3500 kg



MOD. 01001

SWIVEL BLOCK
WEIGHT* – 0.63 kg
SWL – 3500 kg • HR SHACKLE – 10 mm



MOD. 01009

SIMPLE WEB
WEIGHT – 0.41 kg
SWL – 3500 kg • For line connection



MOD. 01007

SIMPLE FIDDLE
WEIGHT* – 0.90 kg
SWL – 3500 kg • HR SHACKLE – 10 mm



MOD. 01003

DOUBLE BLOCK
WEIGHT* – 1.02 kg
SWL – 5000 kg • HR SHACKLE – 12 mm



MOD. 01011

FOOT BLOCK
WEIGHT** – 0.56 kg • SWL – 3500 kg
SCREWS – 4×Ø10 mm + 1×Ø8 mm (incl.)



MOD. 01012

DOUBLE FOOT
WEIGHT** – 1.29 kg • SWL – 3500 kg
SCREWS – 4×Ø10 mm + 1×Ø8 mm (incl.)



→ **MOD. 7212** (page 200)

← **MOD. 01014**

BLOCK PAD-EYE
WEIGHT – 1.01 kg • SWL – 3500 kg
SCREWS – 4×Ø8 mm (included)



→ **MOD. 7312** (page 201)

← **MOD. 01015**

BLOCK SCREWED
WEIGHT – 1.35 kg • SWL – 3500 kg
SCREWS – 4×Ø10 mm (included)



MOD. 01016

VERTICAL FIX
WEIGHT** – 0.63 kg • SWL – 3500 kg
SCREWS – 2×Ø12 mm (included)



MOD. 01002

BECKET BLOCK
WEIGHT* – 0.70 kg
SWL – 3500 kg • HR SHACKLE – 10 mm



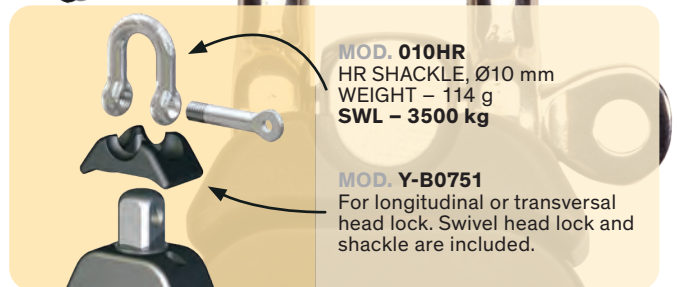
MOD. 01010

WEB BECKET
WEIGHT – 0.48 kg
SWL – 3500 kg • For line connection



MOD. 01008

BECKET FIDDLE
WEIGHT* – 0.90 kg
SWL – 3500 kg • HR SHACKLE – 10 mm



MOD. 010HR
HR SHACKLE, Ø10 mm
WEIGHT – 114 g
SWL – 3500 kg

MOD. Y-B0751
For longitudinal or transversal head lock. Swivel head lock and shackle are included.



Full scale pic →

antal

Blocks 120

120 mm SHEAVE for 18 mm LINE – SAFE WORKING LOAD = 5000 kg



MOD. 01201

SWIVEL BLOCK
WEIGHT* – 1.08 kg
SWL – 5000 kg • HR SHACKLE – 12 mm



MOD. 01202

BECKET BLOCK
WEIGHT* – 1.22 kg
SWL – 5000 kg • HR SHACKLE – 12 mm



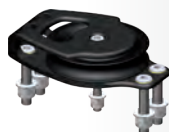
MOD. 01209

SIMPLE WEB
WEIGHT – 0.74 kg
SWL – 5000 kg • For line connection



MOD. 01210

WEB BECKET
WEIGHT – 0.88 kg
SWL – 5000 kg • For line connection



MOD. 01211

FOOT BLOCK
WEIGHT** – 0.80 kg • SWL – 5000 kg
SCREWS – 5×Ø10 mm (included)



MOD. 01212

DOUBLE FOOT
WEIGHT** – 1.97 kg • SWL – 5000 kg
SCREWS – 5×Ø10 mm (included)



→ **MOD. 7214** (page 200)

← **MOD. 01214**

BLOCK PAD-EYE
WEIGHT – 1.70 kg • SWL – 5000 kg
SCREWS – 4×Ø10 mm (not included)



→ **MOD. 7314** (page 201)

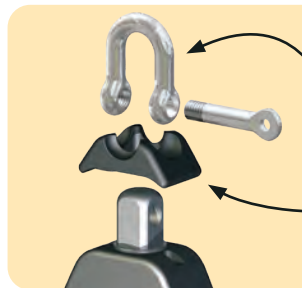
← **MOD. 01215**

BLOCK SCREWED
WEIGHT – 2.00 kg • SWL – 5000 kg
SCREWS – 4×Ø10 mm (not included)



MOD. 01216

VERTICAL FIX
WEIGHT** – 0.96 kg • SWL – 5000 kg
SCREWS – 2×Ø14 mm (included)



MOD. 012HR
HR SHACKLE, Ø12 mm
WEIGHT – 186 g
SWL – 5000 kg

MOD. Y-B0752
For longitudinal or transversal head lock. Swivel head lock and shackle are included.

Full scale pic →

* With shackle
** Without screws



MOD. 01216Z

NEW

VERTICAL FIX
WEIGHT** – 1.25 kg • SWL – 7000 kg
SCREWS – 3×Ø14 mm (included)

Blocks 140

140 mm SHEAVE for 20 mm LINE – SAFE WORKING LOAD = 7000 kg



MOD. 01401

SWIVEL BLOCK
WEIGHT* – 1.50 kg
SWL – 7000 kg • HR SHACKLE – 14 mm



MOD. 01402

BECKET BLOCK
WEIGHT* – 1.70 kg
SWL – 7000 kg • HR SHACKLE – 14 mm



MOD. 01409

SIMPLE WEB
WEIGHT – 1.08 kg
SWL – 7000 kg • For line connection



MOD. 01410

WEB BECKET
WEIGHT – 1.28 kg
SWL – 7000 kg • For line connection



MOD. 01411

FOOT BLOCK
WEIGHT** – 1.25 kg • SWL – 7000 kg
SCREWS – 5xØ12 mm (included)



MOD. 01412

DOUBLE FOOT
WEIGHT** – 2.60 kg • SWL – 7000 kg
SCREWS – 5xØ12 mm (included)



→ **MOD. 7216** (page 200)

← **MOD. 01414**

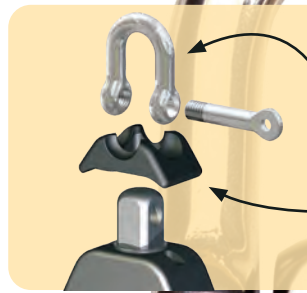
BLOCK PAD-EYE
WEIGHT – 2.60 kg • SWL – 7000 kg
SCREWS – 6xØ10 mm (not included)



→ **MOD. 7316** (page 201)

← **MOD. 01415**

BLOCK SCREWED
WEIGHT – 3.70 kg • SWL – 7000 kg
SCREWS – 6xØ10 mm (not included)



MOD. 014HR
HR SHACKLE, Ø14 mm
WEIGHT – 298 g
SWL – 6500 kg

MOD. Y-B0846
For longitudinal or transversal head lock. Swivel head lock and shackle are included.



Full scale pic →

* With shackle

** Without screws

Mainsheet systems

MAINSHEET SYSTEMS

These systems are particularly suitable for the mainsheet control. 2 sizes are available:

- **Size 60** for boats up to 36 ft and lines up to $\varnothing = 10$ mm, main sheave with Cam-Cleat $\varnothing = 60$ mm, secondary sheave $\varnothing = 50$ mm, SWL (safe working load) = 800 kg.
- **Size 75** for boats up to 40 ft and lines up to $\varnothing = 12$ mm, main sheave with Cam-Cleat $\varnothing = 75$ mm, secondary sheave $\varnothing = 60$ mm, safe working load SWL = 1000 kg.

All sheaves are made of HRM resin with 2 races of ball bearings.



MODEL	E6/60	E6/75	E7/60	E7/75	E8/60	E8/75
POWER	6:1		7:1		8:1	
SWL kg	800	1000	800	1000	800	1000
PRIMARY SHEAVE \varnothing mm	60	75	60	75	60	75
SECONDARY SHEAVE \varnothing mm	50	60	50	60	50	60

TWO SPEED MAINSHEET TACKLE: 4/8, 4/12 AND 6/18

The particular configuration adopted permits the use of large diameter sheaves which improve performance of the system; it also ensures maximum block orientation capabilities and therefore the possibility to operate on both sides of the boat. Furthermore, this reduces the necessary sheet length. The two speeds are controlled by means of two independent lines.

Use 10 mm line for the first speed and 6 mm line for the second speed.



J-Boats, J80 – Ph. C. Breschi

FOR BOATS UP TO 36 ft

FOR BOATS UP TO 40 ft



MODEL	F4/8	F4/12	F6
1 st SPEED	4:1	4:1	6:1
2 nd SPEED	8:1	12:1	18:1
SWL kg	800	800	1000
SHEAVE Ø mm	60	60	60
TOTAL WEIGHT kg	0.88	0.92	1.54

OPF Hollow Pin blocks

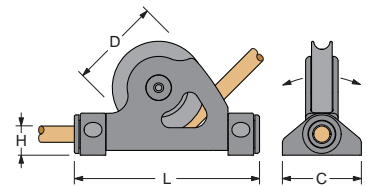
HOLLOW PIN DECK BLOCK 60, 80, 100 mm

The sheave rotates on a hollow pin with the line passing through the pin's centre. This type of arrangement reduces the height of the line off the deck, and the side loads on the block. The line position and its direction to the winch does not change, even when the sheave is articulated off-centre. Body completely made in hard black anodized aluminium. Sheave on Composite Fibre bearing and two side ball bearing. Insulating washer under the fixing screws. Mounting screws, nuts and washers are **included**.



MOD. 00821

MODEL	Ø LINE mm	D mm	H mm	L mm	C mm	SWL kg	WEIGHT* kg	BOLTS N x Ø mm
00621	12	60	19	121	57	1300	0.28	4 x Ø6
00821	14	80	25	160	68	2200	0.49	4 x Ø8
01021	16	100	29	196	79	3500	0.84	4 x Ø10



HOLLOW PIN DECK BLOCK WITH CAM-CLEAT

The smallest model with 60 mm sheave is also available with a Cam-Cleat, adjustable to three positions. Mounting screws, nuts and washers are **included**.

MODEL	Ø LINE mm	D mm	H mm	L mm	C mm	SWL kg	WEIGHT* kg	BOLTS N x Ø mm
00621C	12	60	19	121	57	1300**	0.39	4 x Ø6



MOD. 00621C



* Without screws

** Max load on Cam-Cleat is 150 kg

Itacatamarans 14,99

SHB

NEW

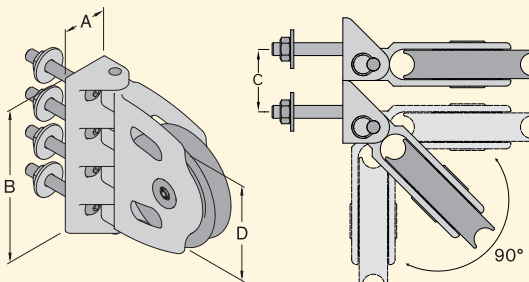
SWIVELLING HALYARD BLOCKS

This special block has been designed to direct the halyards from the mast base to the winches.

Compared to the known “hollow pin” models, it offers two advantages:

- the halyard exit is lower (closer to the deck).
- the narrow base allows the assembly of more blocks in the narrow space of the mast base.

There are actually three sizes available (see the following tab).



MODEL	00619	00819	01019
SIZE (D) mm	60	80	100
SWL kg	1300	2200	3500
BASE (A x B) mm	35 x 102	40 x 120	45 x 150
SCREWS (N x Ø) mm	2 x Ø8	4 x Ø8	4 x Ø10
WEIGHT* g	430	530	920
FOR LINE mm	12	14	16
C mm	35	39	45

* Fixing screws are included

Sunreef Yachts, Sunreef 60

