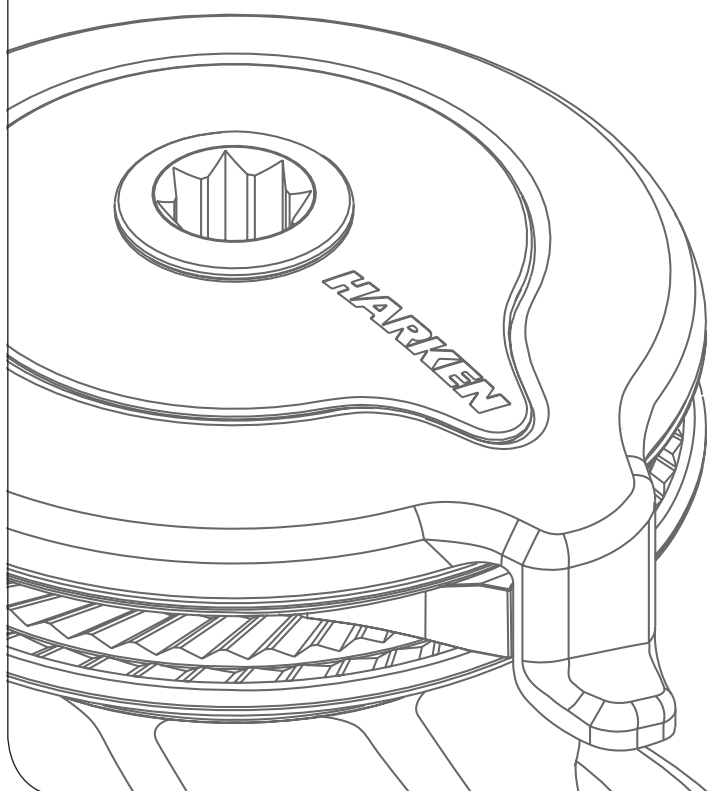


# Installation and Maintenance Manual

MRW-03

## Radial Winch 46.2 ST



**HARKEN<sup>®</sup>**

|   |           |
|---|-----------|
| <b>Introduction</b> .....                       | <b>3</b>  |
| <b>Technical characteristics</b> .....          | <b>3</b>  |
| <i>Weights</i>                                  | 3         |
| <i>Maximum working load</i>                     | 3         |
| <b>Outline</b> .....                            | <b>3</b>  |
| <b>Installation</b> .....                       | <b>4</b>  |
| <i>Procedure 1</i>                              | 5         |
| <i>Procedure 2</i>                              | 6         |
| <i>Installation procedure</i>                   | 8         |
| <i>Positioning the self-tailing arm</i>         | 9         |
| <b>Maintenance</b> .....                        | <b>9</b>  |
| <i>Washing</i>                                  | 9         |
| <i>Maintenance table</i>                        | 9         |
| <i>Disassembly procedure</i>                    | 9         |
| <i>Exploded view with maintenance products</i>  | 13        |
| <i>Assembly</i>                                 | 14        |
| <b>Harken® limited worldwide warranty</b> ..... | <b>15</b> |
| <b>Ordering spare parts</b> .....               | <b>15</b> |
| <b>Exploded view</b> .....                      | <b>16</b> |
| <b>Parts List</b> .....                         | <b>20</b> |
| <i>Radial Winch 46.2 STA</i>                    | 20        |
| <i>Radial Winch 46.2 STC</i>                    | 21        |
| <i>Radial Winch 46.2 STCW</i>                   | 22        |
| <i>Radial Winch 46.2 STBBB</i>                  | 23        |
| <i>Radial Winch 46.2 STCCC</i>                  | 24        |

## Introduction

This manual gives technical information on winch installation and maintenance, including disassembling and reassembling.

This information is DESTINED EXCLUSIVELY for specialised personnel or expert users.

Installation, disassembling and reassembling of the winch by personnel who are not experts may cause serious damage to users and those in the vicinity of the winch.

Harken® accepts no responsibility for defective installation or reassembly of its winches.

In case of doubt the Harken® Tech Service is at your disposal at [techservice@harken.it](mailto:techservice@harken.it)

This Manual is available only in English. If you do not fully understand the English language, do not carry out the operations described in this Manual.

## Technical characteristics

|           | Power ratio | Gear ratio |
|-----------|-------------|------------|
| 1st speed | 11,70 : 1   | 2,30 : 1   |
| 2nd speed | 46,50 : 1   | 9,17 : 1   |

*The theoretical power ratio does not take friction into account.*

## Weights

|             | ST A version | ST C/CW versions | ST BBB/CCC versions |
|-------------|--------------|------------------|---------------------|
| Weight (Kg) | 5,2          | 7,8              | 8,9                 |

*Versions: A = drum in anodised aluminium; C = drum in chrome bronze; CW = chrome/white;  
BBB = all bronze; CCC = All-Chrome bronze*

## Maximum working load

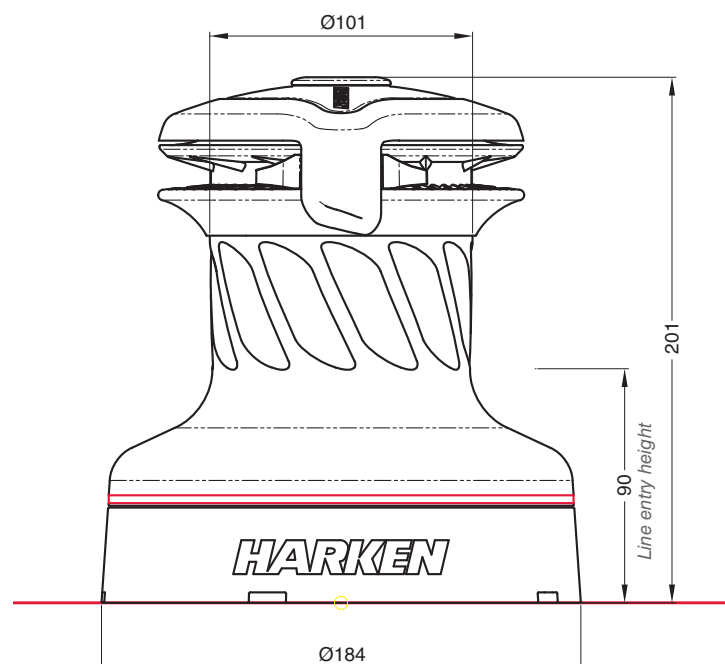


### **WARNING!**

The maximum working load (MWL) for the 46.2 ST Radial Winch is 1300 Kg (2866 lb)

Subjecting the winch to loads above the maximum working load can cause the winch to fail or pull off the deck suddenly and unexpectedly during high loads causing severe injury or death.

## Outline



## Installation

The winch must be installed on a flat area of the deck, reinforced if necessary to bear a load equal to at least twice the maximum working load of the winch.

It is the installer's responsibility to carry out all structural tests needed to ensure that the deck can bear the load.

Harken® does not supply the screws needed to install the winch since these may vary depending on the deck on which it is to be installed.

It is the installer's responsibility to choose the correct screws taking account of the loads they will have to bear.

Harken® assumes no responsibility for incorrect installation of its winches or for an incorrect choice of mounting screws.



### DANGER!

Incorrect installation of the winch may cause severe injury or death. Consult the yard that built the boat in the case of doubt over the correct positioning of the winch.



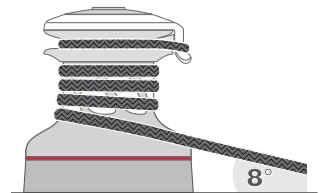
### WARNING!

Failure to use the correct number and type of mounting fasteners or failure to ensure the correct deck strength can result in the winch pulling off the deck suddenly and unexpectedly during high loads causing severe injury or death.



### WARNING!

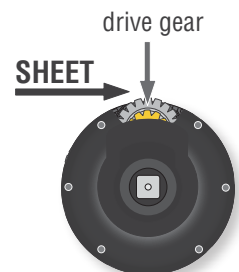
Verify the entry angle of the sheet. This must be  $8^\circ$  with tolerance of  $\pm 2^\circ$ , to avoid sheet overrides and damaging the winch or making the winch inoperable leading to loss of control of the boat which can lead to severe injury or death.



### WARNING!

Mount the winch on the deck so that the drive gear is positioned where the sheet enters the winch drum.

Incorrect position of drive gear can weaken winch leading to failure which can cause an accident leading to severe injury or death.



### NOTICE

For winch STA, STC and STCW versions only you can find the icon ▲ on the skirt to identify the drive gear position.



Once you have chosen the correct mounting position for the winch on the deck proceed with installation.


The winch can be installed following one of the two procedures below (**Procedure 1** or **Procedure 2**):

### Procedure 1

To install the winch you must remove the drum and use bolts as described ahead.

Tools needed  One medium flat-bladed screwdriver

To identify the various parts, refer to the exploded view at the end of this Manual.

 Torque to apply when assembling



1. Unscrew the central screw ( $\approx 2\text{Nm}/18\text{ in-lb}$ )



2. Slide off the assy socket n°30 and the cover n°29



3. Unscrew the three screws n°28  
( $\approx 4\text{Nm}/35\text{ in-lb}$ )



4. Remove the self-tailing arm n°27 by rotating and lifting it.



5. Lift off the drum n°23

Winch STA, STC and STCW versions:

Install the winch on the deck in the position you have chosen, keeping in mind the limits described on page 4 and using socket head (SH) bolts.

Winch STBBB and STCCC versions:

Install the winch on the deck in the position you have chosen, keeping in mind the limits described on page 4 and using socket head (SH) bolts or hexagonal headed bolts (HH).

Procedure 2 (not pertinent for ST BBB/CCC versions)

To install, you must remove the winch skirt and use hexagonal headed bolts.

Tools needed  One medium flat-bladed screwdriver

To identify the various parts, refer to the exploded view at the end of this Manual.



1. Remove the skirt n°2 with the help of the screwdriver placed as shown by the symbol 



2. Take off the skirt n°2



3. Position the 5 M8 hexagonal headed bolts in their holes



4. Reposition the skirt n°2 in its housing



5. Press down the skirt to position it correctly

**NOTICE**

Make sure the skirt is correctly clipped on to the base of the winch.

Install the winch on the deck in the position you have chosen, keeping in mind the limits described on page 4 and using hexagonal headed bolts (HH).  
(See paragraph on installation)

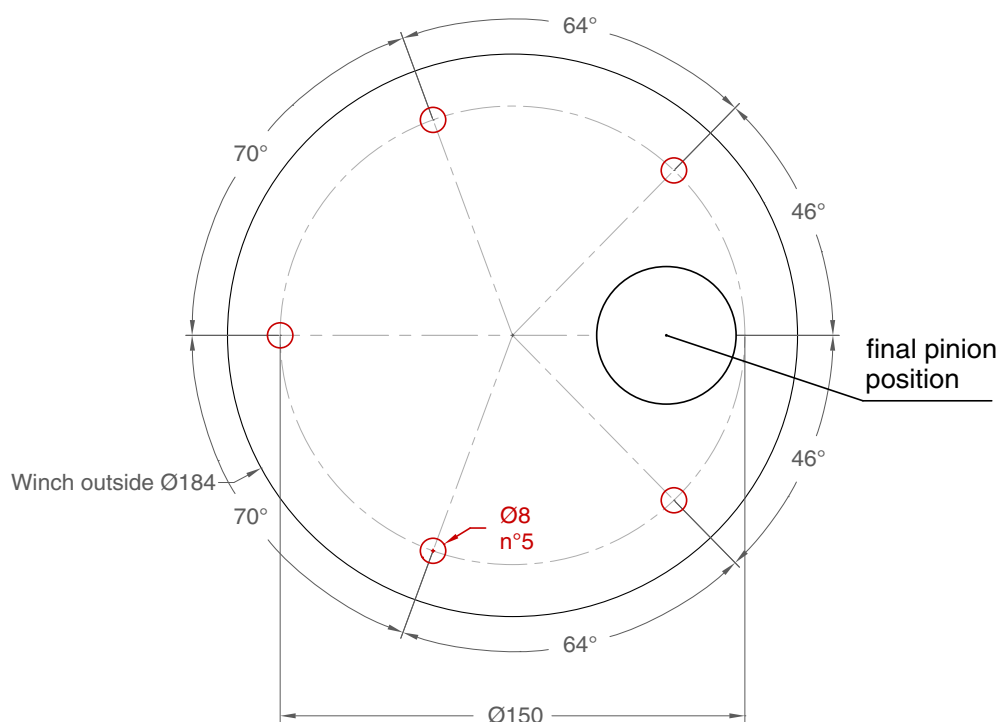
### Installation procedure

**Carry out Procedure 1 or Procedure 2, then install the winch on the deck in the chosen position.**

**A.** Position the base of the winch on the deck and mark the position of the holes or use the drilling cut-out template at the point where you have decided to place the winch.

Below is a reduced scale diagram.

The drilling cut out template is available on the Harken® website, [www.harken.com](http://www.harken.com)



**B.** Remove the winch and drill the five 8.2 mm diameter holes.

**C.** Bolt the base of the winch to the deck using five M8 bolts (not supplied by Harken®) as described at Procedure 1 or Procedure 2, correctly chosen for the thickness and type of the boat deck. Consult the yard that built the boat in case of doubt.



#### **WARNING!**

To install the winch on the deck, use only bolts in A4 stainless steel (DIN 267 part11). Bolts made of other materials may not have sufficient strength or may corrode which can result in winch pulling off deck suddenly and unexpectedly during high loads causing severe injury or death.

#### **NOTICE**

To mount winches on the deck, do not use countersunk bolts.

**D.** Fill the mounting holes with a suitable marine sealant.

**E.** Remove the excess adhesive/sealant from the holes and base drainage channels

**F.** Reassemble the winch following the steps in **Procedure 1** or **Procedure 2** in the reverse order, and apply the products indicated in the section on maintenance.



**NOTICE**

Before closing the winch, make sure the holes and drainage channels in the base of the winch are not obstructed.

Positioning the self-tailing arm

Position the self-tailing arm so that the line leaving the winch is led into the cockpit.

**Maintenance**Washing

Winches must be washed frequently with fresh water, and in any case after each use. Do not allow teak cleaning products or other cleaners containing caustic solutions to come into contact with winches and especially anodised, chrome plated or plastic parts. Do not use solvents, polishes or abrasive pastes on the logos or stickers on the winches. Do not use polishes or abrasive pastes on anodised, chromed plated or plastics surfaces. Make sure that the holes and drainage channels in the base of the winch are not obstructed so that water does not collect.

Maintenance table

Winches must be visually inspected at the beginning and end of every season of sailing or racing. In addition they must be completely overhauled, cleaned and lubricated at least every 12 months. After an inspection, replace worn or damaged components. Do not replace or modify any part of the winch with a part that is not original.



**WARNING!**

Periodic maintenance must be carried out regularly. Lack of adequate maintenance shortens the life of the winch, can cause serious injury and also invalidate the winch warranty. Installation and maintenance of winches must be carried out exclusively by specialized personnel.

In the case of doubt contact Harken® Tech Service at [techservice@harken.it](mailto:techservice@harken.it)

Disassembly procedure

## Tools needed

-  One medium flat-bladed screwdriver
-  A number five hex key
- Rags

To identify the various parts refer to the exploded view at the end of this Manual.

 Torque to be applied in assembly phase

Carry out **Procedure 1** as shown in the paragraph on winch installation and then do the following:



6. Completely unscrew the three screws n° 28 and remove the stripper arm support n°22



7. Slide out the central shaft n°20



8. Unscrew the 5 hex screws n°17  
( $\approx 20\text{Nm}/177\text{ in-lb}$ )



9. Remove the assy housing n°16  
Important: washer n°13 may remain inside the drum support!



10. Remove the gear n°15



11. Remove the washer n°13



12. Remove the gear n°10 and remove the pawls carrier n°7.



13. Remove the gear n°3



14. Remove the pinion n°11. To facilitate the operation press the spring against the pawl with a blade



15. Slide off gear n°6



17. Remove washer n°5

If it is necessary to replace any **jaws** of the winch, proceed as follows:



I. Unscrew the 4 screws n°26  
( $\approx 4\text{Nm}/35\text{ in-lb}$ )



II. Remove the jaws n°25

Once the winch is completely disassembled, clean the parts: use a basin of diesel oil to soak metal components and rinse plastic parts in fresh water. Once you have done this, dry the parts with cloths that do not leave residue.

Inspect gears, bearings, pins and pawls for any signs of wear or corrosion.

Carefully check the teeth of gears and ring gears to make sure there are no traces of wear.

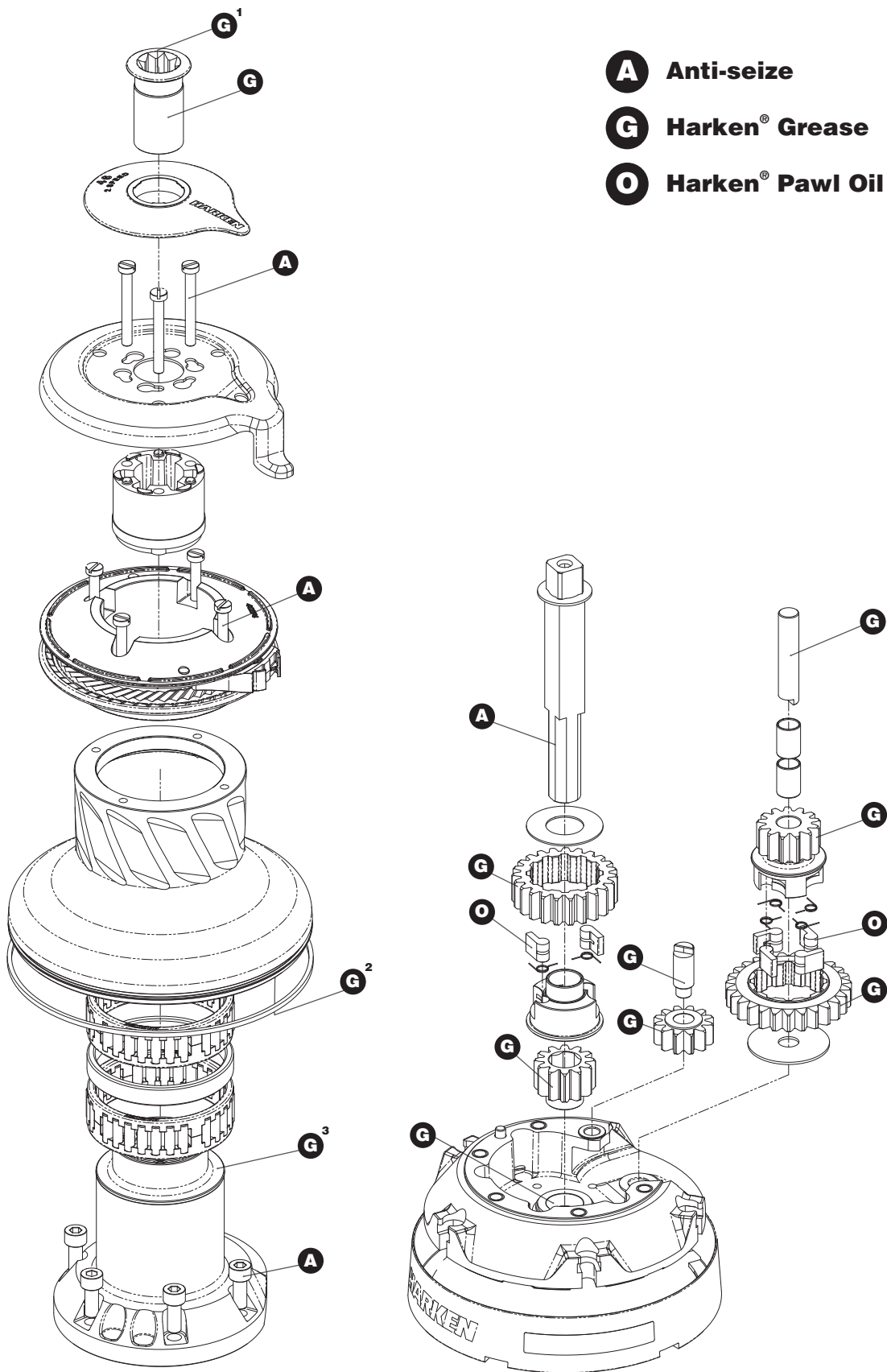
Replace worn or damaged components.

Carry out maintenance on components using the products listed below.

For more information on which products to use where, refer to the exploded diagram below.

Use a brush to lightly lubricate all gears, gear pins, teeth and all moving parts with grease. Lightly lubricate the pawls and springs with oil. Do not use grease on the pawls!

Exploded view with maintenance products



1. Apply Harken® grease on assy socket screw - 2. Apply Harken® grease on drum gear
- 3 Apply Harken® grease on the middle step of assy housing

## Assembly

Make sure that the holes and drainage channels in the base of the winch are not obstructed  
Assemble the winch in the reverse order of the sequence in the section on disassembly.

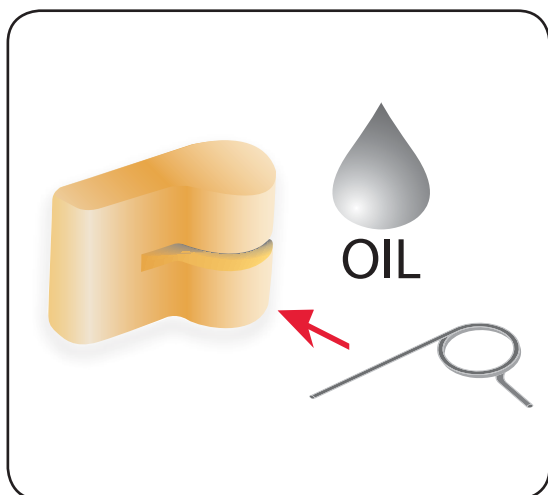
To tighten bolts, use the torque indicated in the disassembly procedure.



When positioning the stripper arm, align the peeler with it.



If the jaws have been disassembled, insert peeler between the two jaws, taking care that the letters TOP on the peeler are facing upwards.



### **To assemble the pawls**

Correctly position the spring in its housing as shown at left. Hold the spring closed and slide the pawl into its housing. Once in position, check that the pawls can be easily opened and closed with a finger.

In case of doubt concerning the assembly procedure contact Harken® Tech Service:  
[techservice@harken.it](mailto:techservice@harken.it)

### Harken® limited worldwide warranty

Refer to the Harken® Limited Worldwide Warranty in the Harken® Catalogue and on the website [www.harken.com](http://www.harken.com)

### Ordering spare parts

Spare parts can be requested from Harken® as described in the Harken® Limited Worldwide Warranty, indicating the part number in the Parts List and including the serial number of the winch for which the parts are required.

***The serial number of the winch is printed on a plate on the drum support of the winch.***



#### Manufacturer

##### ***Harken® Italy S.p.A.***

Via Marco Biagi, 14  
23570 Limido Comasco (CO) Italy  
Tel: (+39) 031.3523511  
Fax: (+39) 031.3535031  
Email: [info@harken.it](mailto:info@harken.it)  
Web: [www.harken.com](http://www.harken.com)

- **Tech Service**  
Email: [techservice@harken.it](mailto:techservice@harken.it)
- **Customer Service**  
Tel: (+39) 031.3523511  
Email: [info@harken.it](mailto:info@harken.it)

#### Headquarters

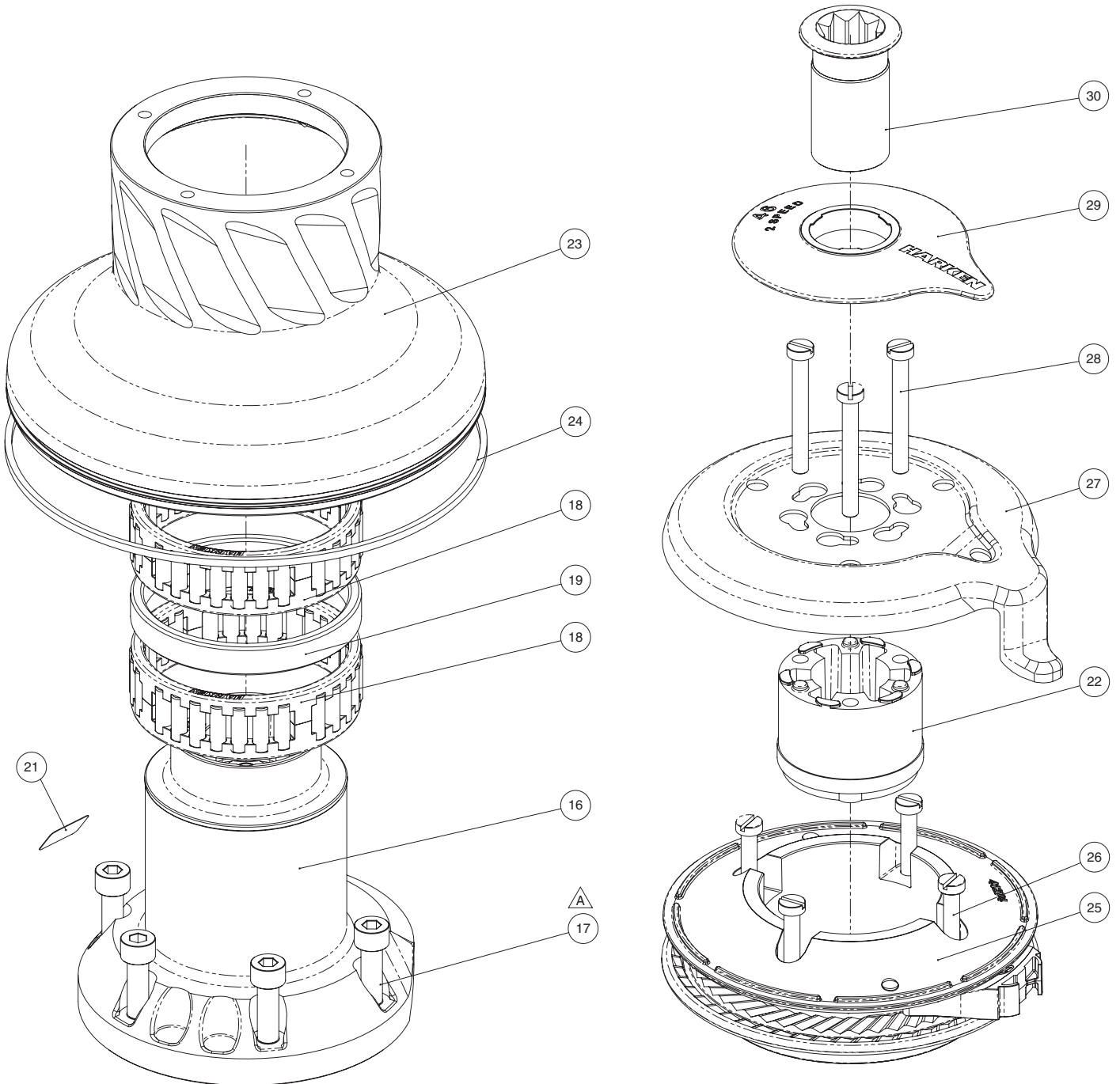
##### ***Harken®, Inc.***

1251 East Wisconsin Avenue  
Pewaukee, Wisconsin 53072-3755 USA  
Tel: (262) 691.3335  
Fax: (262) 691.3008  
Email: [harken@harken.com](mailto:harken@harken.com)  
Web: [www.harken.com](http://www.harken.com)

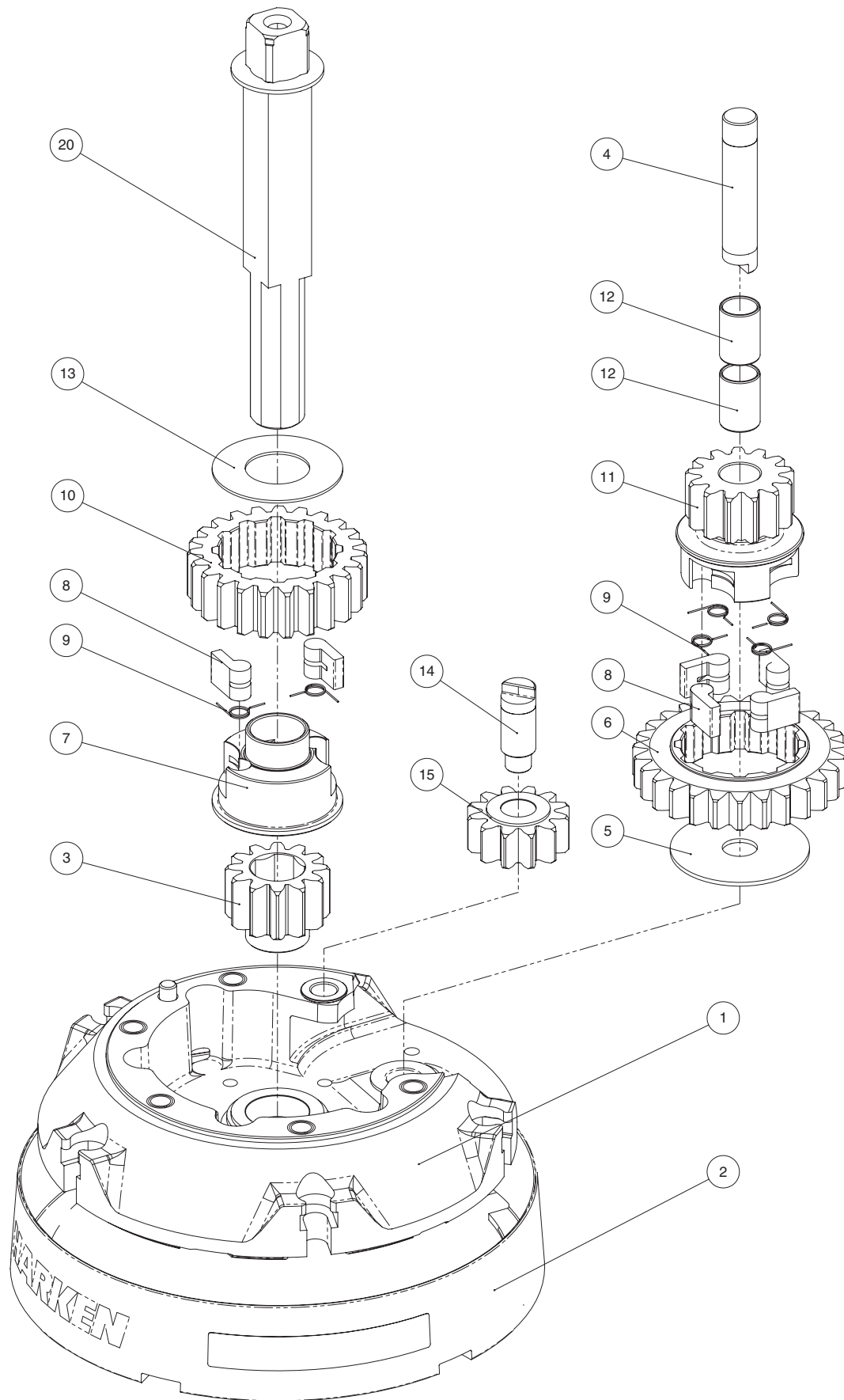
- **Tech Service**  
Email: [technicalservice@harken.com](mailto:technicalservice@harken.com)
- **Customer Service**  
Tel: (262) 691-3335  
Email: [customerservice@harken.com](mailto:customerservice@harken.com)

**Exploded view**

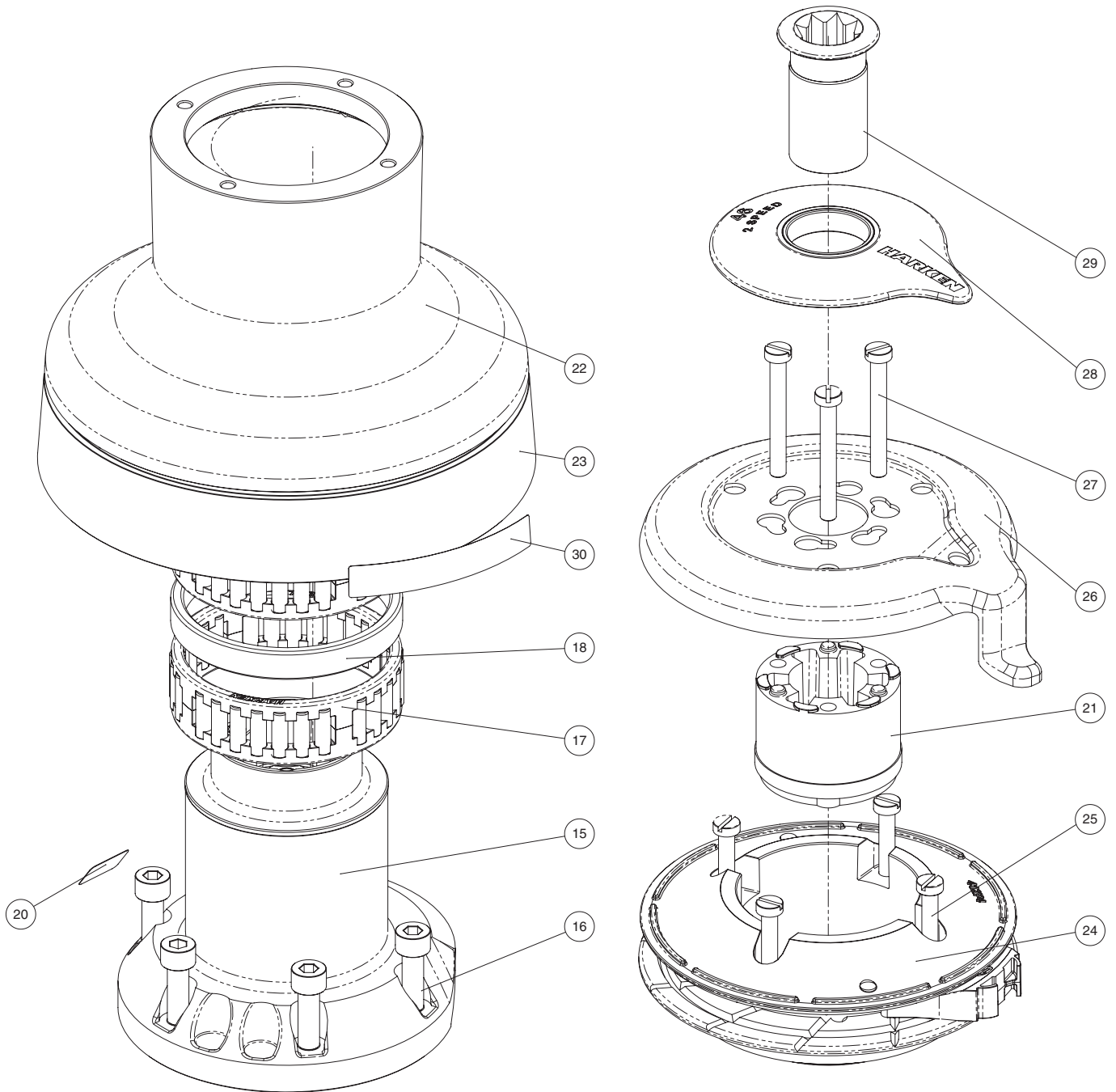
Radial Winch 46.2 STA, STC, STCW



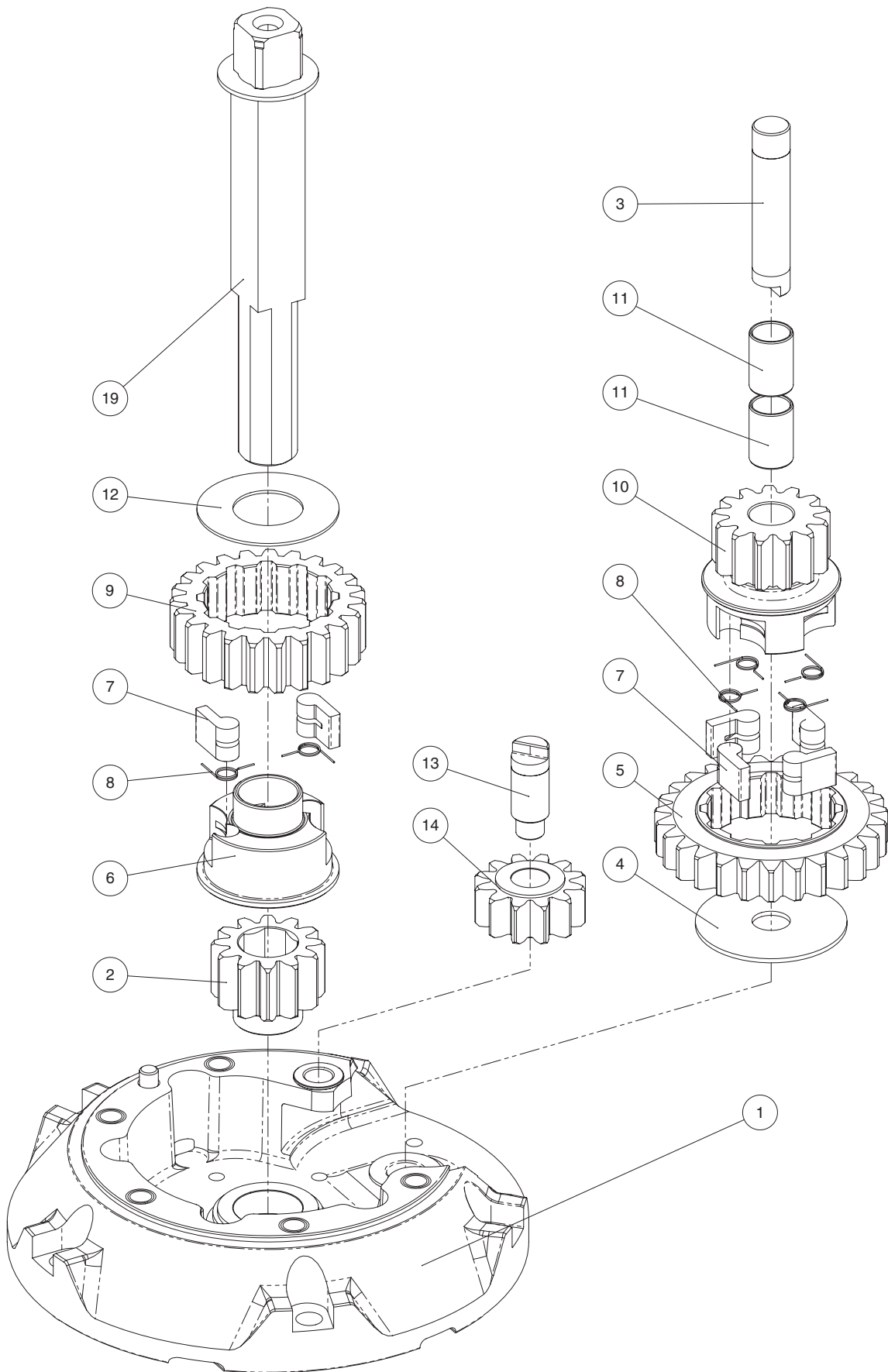


Radial Winch 46.2 STA, STC, STCW

Radial Winch 46.2 STBBB, STCCC



Radial Winch 46.2 STBBB, STCCC



**Parts List**

Radial Winch 46.2 STA

A= drum in anodised aluminium

| Pos. | Q.ty | Code       | Description   | Pos. | Q.ty | Code       | Description  |
|------|------|------------|---|------|------|------------|--|
| 1    | 1    | A94132100  | Assy Base Winch 46<br>Base W46<br>Heli-coil M8x10           | 18   | 2    | A74133700  | Bearing Ø75xØ87x26                                   |
|      | 1    | S413350080 | Roller Ø6x19  | 19   | 1    | S413390080 | Spacer   |
|      | 1    | S4152300A7 | Bushing Ø22xØ25x9.5   | 20   | 1    | A94161400  | Assy Central Shaft Winch 46<br>Central shaft W46 ST  |
|      | 1    | S414890080 | Bushing Ø9xØ11x7  | 1    | 1    | S413880002 | Washer Ø17.2xØ32x1.5                                 |
|      | 1    | S413330085 | Bushing Ø12xØ14x11  | 21   |      |            | Winch Serial Number Sticker                          |
| 2    | 1    | A941323 00 | Assy Skirt Winch 46<br>Skirt W46<br>Winch Product Sticker** | 22   | 1    | S4129400A0 | Stripper arm support                                 |
| 3    | 1    | S413020004 | Gear Z12  | 23   | 1    | S412720053 | Drum W46   |
| 4    | 1    | S413300004 | Pin Ø12x60  | 24   | 1    | S281690097 | Red line   |
| 5    | 1    | S278170002 | Washer Ø12.5xØ48x1.5  | 25   | 1    | A94127300  | Assy Jaws winch 46<br>Lower Jaw W46<br>Upper Jaw W46 |
| 6    | 1    | S413260004 | Gear Z27  | 1    | 1    | S414280080 | Peeler W46 - 50                                      |
| 7    | 1    | S414260004 | Pawls Carrier Ø8xN2   | 4    | 4    | S385970001 | SPRING   |
| 8    | 6    | S000080003 | Pawl Ø8*  | 26   | 4    | M0601803   | Screw UNI EN ISO 1207:1996 - M6x35 - A4              |
| 9    | 6    | S000380001 | Pawl Spring Ø8*   | 27   | 1    | S413380019 | Stripper Arm W46                                     |
| 10   | 1    | S412830041 | Gear Z23  | 28   | 3    | M6007103   | Screw M6x50 UNI6107                                  |
| 11   | 1    | S413250041 | Pinion Z13  | 29   | 1    | S4127000A5 | Cover 2 speed W46                                    |
| 12   | 2    | M6017694   | IGUS Bushing PSM-1214-20                                    | 30   | 1    | A94136400  | Assy Socket W20-80<br>Socket Handle W20/80           |
| 13   | 1    | S413120002 | Washer Ø22.5xØ45x1  | 1    | 1    | S415130085 | Washer Ø7.7xØ25x5.8                                  |
| 14   | 1    | S413070004 | Pin Ø9-Ø12x32.5   | 1    | 1    | M0614303   | Screw M8x20 UNI 6109                                 |
| 15   | 1    | A94133400  | Assy Gear Z12<br>Gear Z12                                   |      |      |            |  |
|      | 2    | S414900080 | Bushing Ø12xØ14x8   |      |      |            |  |
| 16   | 1    | A94132200  | Assy Housing Winch 46<br>Housing Winch 46                   |      |      |            |  |
|      | 1    | S414900080 | Bushing Ø12xØ14x8   |      |      |            |  |
|      | 1    | S413330085 | Bushing Ø12xØ14x11  |      |      |            |  |
|      | 1    | S4133200B3 | Heli-coil M6x9<br>Bushing for support                       |      |      |            |  |
| 17   | 5    | M0606303   | Screw M8x25 UNI 5931  |      |      |            |  |

\*Available with service kit; see website [www.harken.com](http://www.harken.com)

\*\*Winch product sticker



## Radial Winch 46.2 STC

C=drum in chrome bronze

| Pos. | Q.ty | Code       | Description   | Pos. | Q.ty | Code       | Description  |
|------|------|------------|---|------|------|------------|--|
| 1    | 1    | A94132100  | Assy Base Winch 46<br>Base W46<br>Heli-coil M8x10           | 18   | 2    | A74133700  | Bearing Ø75xØ87x26                                   |
|      | 1    | S413350080 | Roller Ø6x19  | 19   | 1    | S413390080 | Spacer   |
|      | 1    | S4152300A7 | Bushing Ø22xØ25x9.5   | 20   | 1    | A94161400  | Assy Central Shaft Winch 46<br>Central shaft W46 ST  |
|      | 1    | S414890080 | Bushing Ø9xØ11x7  | 1    | 1    | S413880002 | Washer Ø17.2xØ32x1.5                                 |
|      | 1    | S413330085 | Bushing Ø12xØ14x11  | 21   |      |            | Winch Serial Number Sticker                          |
| 2    | 1    | A94132300  | Assy Skirt Winch 46<br>Skirt W46<br>Winch Product Sticker** | 22   | 1    | S4129400A0 | Stripper arm support                                 |
| 3    | 1    | S413020004 | Gear Z12  | 23   | 1    | S413240043 | Drum W46 C   |
| 4    | 1    | S413300004 | Pin Ø12x60  | 24   | 1    | S281690097 | Red line   |
| 5    | 1    | S278170002 | Washer Ø12.5xØ48x1.5  | 25   | 1    | A94127300  | Assy Jaws winch 46<br>Lower Jaw W46<br>Upper Jaw W46 |
| 6    | 1    | S413260004 | Gear Z27  | 1    | 1    | S414280080 | Peeler W46 - 50                                      |
| 7    | 1    | S414260004 | Pawls Carrier Ø8xN2   | 4    | 4    | S385970001 | SPRING   |
| 8    | 6    | S000080003 | Pawl Ø8*  | 26   | 4    | M0601803   | Screw UNI EN ISO 1207:1996 - M6x35 - A4              |
| 9    | 6    | S000380001 | Pawl Spring Ø8*   | 27   | 1    | S413380019 | Stripper Arm W46                                     |
| 10   | 1    | S412830041 | Gear Z23  | 28   | 3    | M6007103   | Screw M6x50 UNI6107                                  |
| 11   | 1    | S413250041 | Pinion Z13  | 29   | 1    | S4127000A5 | Cover 2 speed W46                                    |
| 12   | 2    | M6017694   | IGUS Bushing PSM-1214-20                                    | 30   | 1    | A94136400  | Assy Socket W20-80<br>Socket Handle W20/80           |
| 13   | 1    | S413120002 | Washer Ø22.5xØ45x1  | 1    | 1    | S415130085 | Washer Ø7.7xØ25x5.8                                  |
| 14   | 1    | S413070004 | Pin Ø9-Ø12x32.5   | 1    | 1    | M0614303   | Screw M8x20 UNI 6109                                 |
| 15   | 1    | A94133400  | Assy Gear Z12<br>Gear Z12                                   |      |      |            |  |
|      | 2    | S414900080 | Bushing Ø12xØ14x8   |      |      |            |  |
| 16   | 1    | A94132200  | Assy Housing Winch 46<br>Housing Winch 46                   |      |      |            |  |
|      | 1    | S414900080 | Bushing Ø12xØ14x8   |      |      |            |  |
|      | 1    | S413330085 | Bushing Ø12xØ14x11  |      |      |            |  |
|      | 1    | S4133200B3 | Heli-coil M6x9<br>Bushing for support                       |      |      |            |  |
| 17   | 5    | M0606303   | Screw M8x25 UNI 5931  |      |      |            |  |

\*Available with service kit; see website [www.harken.com](http://www.harken.com)

\*\*Winch product sticker



## Radial Winch 46.2 STCW

CW = chrome/white

| Pos. | Q.ty | Code       | Description   | Pos. | Q.ty | Code        | Description  |
|------|------|------------|---|------|------|-------------|--|
| 1    | 1    | A94132100  | Assy Base Winch 46<br>Base W46<br>Heli-coil M8x10                   | 18   | 2    | A74133700   | Bearing Ø75xØ87x26   |
|      | 1    | S413350080 | Roller Ø6x19  | 19   | 1    | S413390080  | Spacer   |
|      | 1    | S4152300A7 | Bushing Ø22xØ25x9.5   | 20   | 1    | A94161400   | Assy Central Shaft Winch 46<br>Central shaft W46 ST                  |
|      | 1    | S414890080 | Bushing Ø9xØ11x7  | 1    | 1    | S413880002  | Washer Ø17.2xØ32x1.5   |
|      | 1    | S413330085 | Bushing Ø12xØ14x11  | 21   |      |             | Winch Serial Number Sticker  |
| 2    | 1    | A94132300W | Assy Skirt Winch 46<br>Skirt W46 RAL9003<br>Winch Product Sticker** | 22   | 1    | S4129400A0  | Stripper arm support   |
| 3    | 1    | S413020004 | Gear Z12  | 23   | 1    | S413240043  | Drum C W46   |
| 4    | 1    | S413300004 | Pin Ø12x60  | 24   | 1    | S281690097  | Red line   |
| 5    | 1    | S278170002 | Washer Ø12.5xØ48x1.5  | 25   | 1    | A94127300W  | Assy Jaws winch 46<br>Lower Jaw W46 RAL9003<br>Upper Jaw W46 RAL9003 |
| 6    | 1    | S413260004 | Gear Z27  | 1    | 1    | S414280080W | Peeler W46 - 50 RAL9003  |
| 7    | 1    | S414260004 | Pawls Carrier Ø8xN2   | 4    | 4    | S385970001  | SPRING   |
| 8    | 6    | S000080003 | Pawl Ø8*  | 26   | 4    | M0601803    | Screw UNI EN ISO 1207:1996 - M6x35 - A4                              |
| 9    | 6    | S000380001 | Pawl Spring Ø8*   | 27   | 1    | S413380019  | Stripper Arm W46   |
| 10   | 1    | S412830041 | Gear Z23  | 28   | 3    | M6007103    | Screw M6x50 UNI6107  |
| 11   | 1    | S413250041 | Pinion Z13  | 29   | 1    | S4127000A5W | Cover 2 speed W46 RAL9003  |
| 12   | 2    | M6017694   | IGUS Bushing PSM-1214-20  | 30   | 1    | A94136400   | Assy Socket W20-80<br>Socket Handle W20/80                           |
| 13   | 1    | S413120002 | Washer Ø22.5xØ45x1  | 1    | 1    | S415130085  | Washer Ø7.7xØ25x5.8  |
| 14   | 1    | S413070004 | Pin Ø9-Ø12x32.5   | 1    | 1    | M0614303    | Screw M8x20 UNI 6109   |
| 15   | 1    | A94133400  | Assy Gear Z12<br>Gear Z12   |      |      |             |  |
|      | 2    | S414900080 | Bushing Ø12xØ14x8   |      |      |             |  |
| 16   | 1    | A94132200  | Assy Housing Winch 46<br>Housing Winch 46                           |      |      |             |  |
|      | 1    | S414900080 | Bushing Ø12xØ14x8   |      |      |             |  |
|      | 1    | S413330085 | Bushing Ø12xØ14x11  |      |      |             |  |
|      | 1    | S4133200B3 | Heli-coil M6x9<br>Bushing for support                               |      |      |             |  |
| 17   | 5    | M0606303   | Screw M8x25 UNI 5931  |      |      |             |  |

\*Available with service kit; see website [www.harken.com](http://www.harken.com)

\*\*Winch product sticker



## Radial Winch 46.2 STBBB

BBB = all bronze

| Pos. | Q.ty | Code       | Description   | Pos. | Q.ty | Code       | Description  |
|------|------|------------|---|------|------|------------|--|
| 1    | 1    | A96633300  | PERFORMA Assy Base Winch 46<br><i>PERFORMA Base W46<br/>Heli-coil M8x10</i> | 18   | 1    | S413390080 | Spacer   |
|      | 1    | S413350080 | <i>Roller Ø6x19</i>   | 19   | 1    | A94161400  | Assy Central Shaft Winch 46<br><i>Central shaft W46 ST</i> |
|      | 1    | S4152300A7 | <i>Bushing Ø22xØ25x9.5</i>  |      | 1    | S413880002 | <i>Washer Ø17.2xØ32x1.5</i>                                |
|      | 1    | S414890080 | <i>Bushing Ø9xØ11x7</i>   | 20   |      |            | Winch Serial Number Sticker                                |
|      | 1    | S413330085 | <i>Bushing Ø12xØ14x11</i>   | 21   | 1    | S4129400A0 | Stripper arm support                                       |
| 2    | 1    | S413020004 | Gear Z12  | 22   | 1    | S688150043 | Drum BBB W46   |
| 3    | 1    | S413300004 | Pin Ø12x60  | 23   | 1    | S281690097 | Red line   |
| 4    | 1    | S278170002 | Washer Ø12.5xØ48x1.5  | 24   | 1    | A96933000  | Assy Jaws winch 46 BBB<br><i>Lower Jaw W46 BBB</i>         |
| 5    | 1    | S413260004 | Gear Z27  |      |      |            | <i>Upper Jaw W46</i>                                       |
| 6    | 1    | S414260004 | Pawls Carrier Ø8xN2   |      | 1    | S414280080 | <i>Peeler W46 - 50</i>                                     |
| 7    | 6    | S000080003 | Pawl Ø8*  |      | 4    | S385970001 | <i>SPRING</i>  |
| 8    | 6    | S000380001 | Pawl Spring Ø8*   | 25   | 4    | M0601803   | Screw UNI EN ISO 1207:1996 - M6x35<br>- A4                 |
| 9    | 1    | S412830041 | Gear Z23  | 26   | 1    | S693290019 | Stripper Arm W46 BBB                                       |
| 10   | 1    | S413250041 | Pinion Z13  | 27   | 3    | M6007103   | Screw M6x50 UNI6107  |
| 11   | 2    | M6017694   | IGUS Bushing PSM-1214-20  | 28   | 1    | A76933100  | Cover 2 speed W46 BBB                                      |
| 12   | 1    | S413120002 | Washer Ø22.5xØ45x1  | 29   | 1    | A94136400  | Assy Socket W20-80<br><i>Socket Handle W20/80</i>          |
| 13   | 1    | S413070004 | Pin Ø9-Ø12x32.5   |      | 1    | S415130085 | <i>Washer Ø7.7xØ25x5.8</i>                                 |
| 14   | 1    | A94133400  | Assy Gear Z12<br><i>Gear Z12</i>  |      | 1    | M0614303   | <i>Screw M8x20 UNI 6109</i>                                |
|      | 2    | S414900080 | <i>Bushing Ø12xØ14x8</i>  | 30   |      |            | Winch Product Sticker**                                    |
| 15   | 1    | A94132200  | Assy Housing Winch 46<br><i>Housing Winch 46</i>                            |      |      |            |  |
|      | 1    | S414900080 | <i>Bushing Ø12xØ14x8</i>  |      |      |            |  |
|      | 1    | S413330085 | <i>Bushing Ø12xØ14x11</i>   |      |      |            |  |
|      | 1    | S4133200B3 | <i>Heli-coil M6x9</i><br><i>Bushing for support</i>                         |      |      |            |  |
| 16   | 5    | M0606303   | Screw M8x25 UNI 5931  |      |      |            |  |
| 17   | 2    | A74133700  | Bearing Ø75xØ87x26  |      |      |            |  |

\*Available with service kit; see website [www.harken.com](http://www.harken.com)

\*\*Winch product sticker



## Radial Winch 46.2 STCCC

CCC = All-Chrome bronze

| Pos. | Q.ty | Code       | Description   | Pos. | Q.ty | Code        | Description   |
|------|------|------------|---|------|------|-------------|---|
| 1    | 1    | A96633300  | PERFORMA Assy Base Winch 46<br><i>PERFORMA Base W46<br/>Heli-coil M8x10</i> | 18   | 1    | S413390080  | Spacer  |
|      | 1    | S413350080 | <i>Roller Ø6x19</i>   | 19   | 1    | A94161400   | Assy Central Shaft Winch 46<br><i>Central shaft W46 ST</i>  |
|      | 1    | S4152300A7 | <i>Bushing Ø22xØ25x9.5</i>  |      | 1    | S413880002  | <i>Washer Ø17.2xØ32x1.5</i>   |
|      | 1    | S414890080 | <i>Bushing Ø9xØ11x7</i>   | 20   |      |             | Winch Serial Number Sticker   |
|      | 1    | S413330085 | <i>Bushing Ø12xØ14x11</i>   | 21   | 1    | S4129400A0  | Stripper arm support  |
| 2    | 1    | S413020004 | Gear Z12  | 22   | 1    | S681060043  | Drum CCC W46  |
| 3    | 1    | S413300004 | Pin Ø12x60  | 23   | 1    | S281690097  | Red line  |
| 4    | 1    | S278170002 | Washer 12.5x48x1.5  | 24   | 1    | A96812000   | Assy Jaws winch 46 CCC<br><i>Lower Jaw W46 CCC<br/>Upper Jaw W46 RAL9003<br/>Peeler W46 - 50 RAL9003<br/>SPRING</i> |
| 5    | 1    | S413260004 | Gear Z27  |      | 1    | S414280080W |   |
| 6    | 1    | S414260004 | Pawls Carrier Ø8xN2   |      | 4    | S385970001  |   |
| 7    | 6    | S000080003 | Pawl Ø8*  | 25   | 4    | M0601803    | Screw UNI EN ISO 1207:1996 - M6x35<br>- A4  |
| 8    | 6    | S000380001 | Pawl Spring Ø8*   | 26   | 1    | S413380019  | Stripper Arm W46  |
| 9    | 1    | S412830041 | Gear Z23  | 27   | 3    | M6007103    | Screw M6x50 UNI6107   |
| 10   | 1    | S413250041 | Pinion Z13  | 28   | 1    | A76811300   | Cover 2 speed W46 CCC   |
| 11   | 2    | M6017694   | IGUS Bushing PSM-1214-20  | 29   | 1    | A94136400   | Assy Socket W20-80<br><i>Socket Handle W20/80</i>   |
| 12   | 1    | S413120002 | Washer Ø22.5xØ45x1  |      | 1    | S415130085  | <i>Washer Ø7.7xØ25x5.8</i>  |
| 13   | 1    | S413070004 | Pin Ø9-Ø12x32.5   |      | 1    | M0614303    | <i>Screw M8x20 UNI 6109</i>   |
| 14   | 1    | A94133400  | Assy Gear Z12<br><i>Gear Z12</i>  | 30   |      |             | Winch Product Sticker**   |
|      | 2    | S414900080 | <i>Bushing Ø12xØ14x8</i>  |      |      |             |   |
| 15   | 1    | A94132200  | Assy Housing Winch 46<br><i>Housing Winch 46</i>                            |      |      |             |   |
|      | 1    | S414900080 | <i>Bushing Ø12xØ14x8</i>  |      |      |             |   |
|      | 1    | S413330085 | <i>Bushing Ø12xØ14x11</i>   |      |      |             |   |
|      | 1    | S4133200B3 | <i>Heli-coil M6x9<br/>Bushing for support</i>                               |      |      |             |   |
| 16   | 5    | M0606303   | Screw M8x25 UNI 5931  |      |      |             |   |
| 17   | 2    | A74133700  | Bearing Ø75xØ87x26  |      |      |             |   |

\*Available with service kit; see website [www.harken.com](http://www.harken.com)

\*\*Winch product sticker

