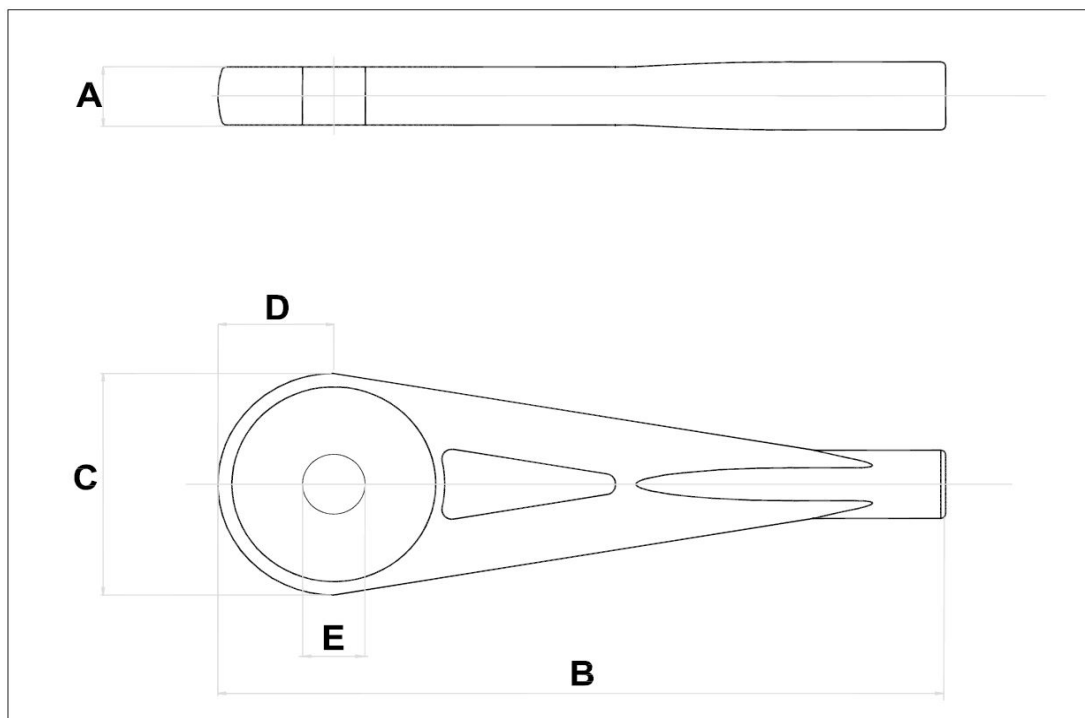


TERMINAL TYPE	Dimensions					H
	A	B	C	D	E	
PIN						
AA	7,7	60,0	26,0	13,0	10,0	
A	9,5	102,2	34,5	17,3	12,0	11,5
Bz12	12,0	137,8	45,5	22,8	16,0	15,0
Bz14	14,5	137,8	45,5	22,8	16,0	17,5
C	17,0	159,0	52,0	26,0	22,0	22,0
D	20,0	185,0	60,0	30,0	26,0	23,5
E	23,0	218,5	70,0	35,0	30,0	26,5
F	27,0	233,7	76,0	38,0	35,0	32,0
G	33,0	292,0	92,0	46,0	40,0	43,0

parte grossa uscita ca

TERMINAL TYPE	Dimensions					H
	A	B	C	D	E	
LASH						
00	7,7	60,0	26,0	13,0	8,0	
0	9,5	112,2	34,5	17,3	10,0	11,5
1	14,5	147,8	45,5	22,8	17,0	17,5
2	17,0	169,0	52,0	26,0	21,0	22,0
3	20,0	195,0	60,0	30,0	24,0	23,5
4	23,0	228,5	71,0	35,5	26,0	26,5
5	27,0	233,7	76,0	38,0	28,0	32,0
6	33,0	292,0	92,0	46,0	40,0	43,0

parte grossa uscita ca



H