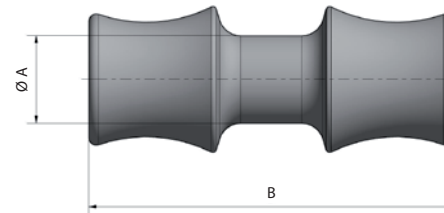
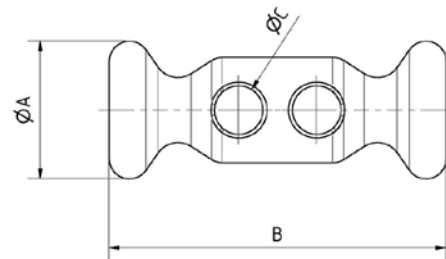




Our new, stylish KOHLHOFF LOOP® Dogbones are one of the quickest and easiest ways to connect lines to other lines and/or to hardware. The advantage of a dogbone over a knot or a lashing is that they never bind and are quick and easy to release.



Here a nice example for the use of our simple, elegant and strong dogbones.

Product No.	Description	Material	A	B	C	SWL	BL/kg	Weight/g	Rope max. Dia.
L-DB3	LOOP® Dogbone	Aluminium	8 mm	21 mm	3,5 mm	300	600	1	3 mm
L-DB4	LOOP® Dogbone	Aluminium	12,5 mm	31 mm	5 mm	550	1100	4	4 mm
L-DB5	LOOP® Dogbone	Aluminium	16,5 mm	41 mm	6 mm	950	1900	10	5 mm
L-DB6	LOOP® Dogbone	Aluminium	21 mm	51 mm	8 mm	1500	3000	22	6 mm
L-DB8	LOOP® Dogbone	Aluminium	25,5 mm	63 mm	9,5 mm	2000	4000	40	8 mm
L-DB10	LOOP® Dogbone	Aluminium	28,5 mm	70 mm	11 mm	2500	5000	58	10 mm
L-DB12	LOOP® Dogbone	Aluminium	34 mm	84 mm	13 mm	3500	7000	98	12 mm

Product No.	Description	Material	A	B	Weight/g	MWL/kg	BL/kg	Rope max. Dia.
L-DB25	LOOP® Dogbone	Stainless Steel	6 mm	25 mm	10	1000	2000	6 mm
L-DB40	LOOP® Dogbone	Stainless Steel	8,5 mm	40 mm	18	2000	4000	8 mm
L-DB60	LOOP® Dogbone	Stainless Steel	10 mm	60 mm	25	4000	8000	10 mm