

# UPFFRONT.COM SMARTSAILING GUIDE

TROGEAR BOWSPRITS – AN  
OVERVIEW

UPFFRONT.COM



# TROGEAR BOWSPRITS – AN OVERVIEW

A strong, reliable, and unique retrofit bowsprit solution for boats from 25 – 70ft.

The hinge mount installation and adjustable bobstay means you can adjust sail luff tension from the cockpit and raise the sprit for easier sail handling and to reduce waterline length when berthing in marinas.

## Benefits:

**Carbon Fibre Construction** – Light and strong with UV resistant clear Polyurethane coating

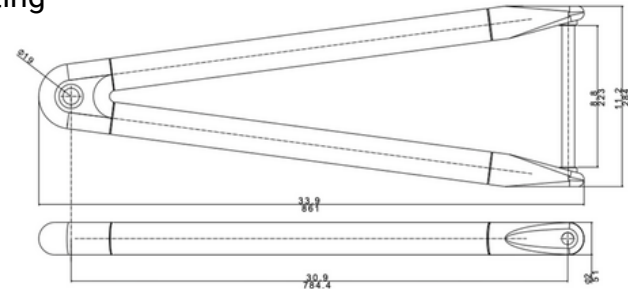
**Triangular Design** – Simple, solid triangular design offers best strength to weight ratio

**Hinged Installation** – Unique design, with adjustable bobstay, for easy sail handling

**Code Zero Compatible** – Designed to handle full code zero loads

**Easy to Use** – Adjustable from the cockpit = Excellent for short-handed sailing

**Removable** - Quick release option available for fast removal and stowage



## Installation Methods:



**On-Deck** – Anodized aluminium U-brackets can be bolted through the deck, close to the outboard edge



**Through Hull** – The neatest and best solution but does require bonding a glass fibre tube through the bow



**Bow Roller** – Generic stainless brackets can be bolted to existing anchor rollers to deploy the bowsprit over the top of the anchor



**Side Mounts** – Designed specifically for narrow bows and bolted through the hull. For the AS40 and AS50 versions only



**Catamaran Cross Beam** – Cat Brackets (for the AS40 and AS50 versions only) are bolted on the forward face of the cross beam. Used in conjunction with a dolphin striker

These are the standard mounting methods however there are thousands of different and challenging bow configurations and we are happy to look at custom installation methods to find the best solution for your boat. To get a free analysis of the options available, [please complete our questionnaire](#) and send to us at [support@upffront.com](mailto:support@upffront.com)

## Size Guide:

The AS25 and AS30R are the same physical size but the AS30R has a thicker tube laminate to take the increased loads on a larger boat. This is the same for the AS40 and AS50.

	AS25	AS30R	AS40	AS50	ATLAS	MAXI
<b>Boat Length <sup>f</sup></b>	8m (25')	11m (35')	11m (35')	14m (45')	16m (50')	21m (70')
<b>Bowsprit Length</b>	85cm (33.5")	85cm (33.5")	126cm (50")	126cm (50")	137cm (54")	237cm (93")
<b>Weight</b>	1.1kg (2.25lbs)	1.25kg (2.75lbs)	1.9kg (4.1lbs)	2.6kg (5.7lbs)	3.6kg (7.9lbs)	11kg (24.25lbs)
<b>Extension past bow</b>	~61cm (24")	~61cm (24")	~91.5cm (36")	~91.5cm (36")	~115cm (45")	~200cm (78")
<b>Inside hinge width</b>	22.4cm (8.8")	22.4cm (8.8")	32.7cm (12.9")	32.7cm (12.9")	20cm (7.8")	38cm (14.9")
<b>Asymm max size</b>	70m2 (750ft2)	100m2 (1075ft2)	100m2 (1075ft2)	120m2 (1300ft2)	200m2 (2150ft2)	250m2 (2700ft2)
<b>Code 0 max size</b>	58m2 (600ft2)	80m2 (840ft2)	80m2 (840ft2)	100m2 (1075ft2)	160m2 (1680ft2)	200m2 (2150ft2)
<b>SWL*</b>	700kg (1500lbs)	1000kg (2200lbs)	1000kg (2200lbs)	1200kg (2750lbs)	2000kg (4400lbs)	2500kg (5500lbs)

<sup>f</sup> Boat length vs Trogear size recommendations are based on a medium displacement cruising mono-hull. For heavy displacement boats, multihulls, racers or blue water cruisers you should consider going up a size

\* Safe Working Load (SWL) is the maximum load created by the bobstay on the bowsprit at the attachment point of the bobstay, assuming a 30 degree angle to the bowsprit

### Semi-custom solutions

Depending on your boat, bow configuration or sailing program you may need to consider a semi-custom solution where the standard model is shortened or lengthened to change the inside hinge width. Over the years Trogear have developed a vast knowledgebase of possible tweaks and / or mounting scenarios, so please do contact us at [support@upffront.com](mailto:support@upffront.com) if you would like to look at bowsprit options for your boat.