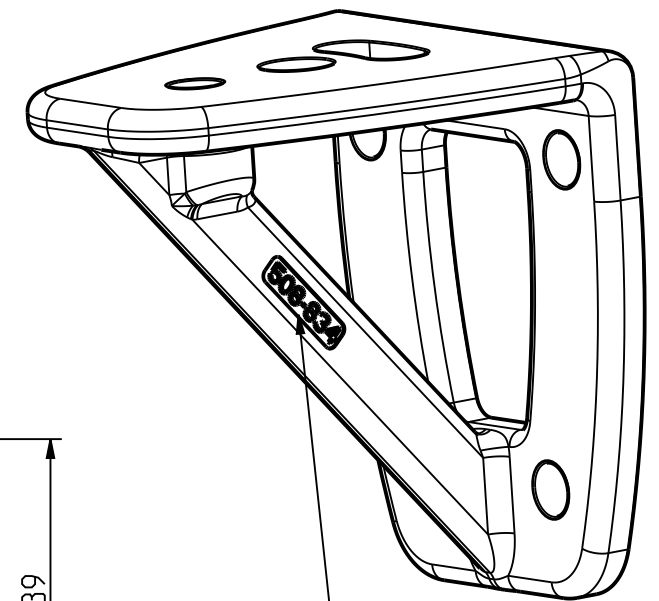


A  
2:1



CAST PART NO  
IN RECESS

FEED AREAS TO BE GROUND FLUSH  
CAST PART NO. AS SHOWN  
SHOTBLAST/RUMBLE  
ELECTRO POLISH

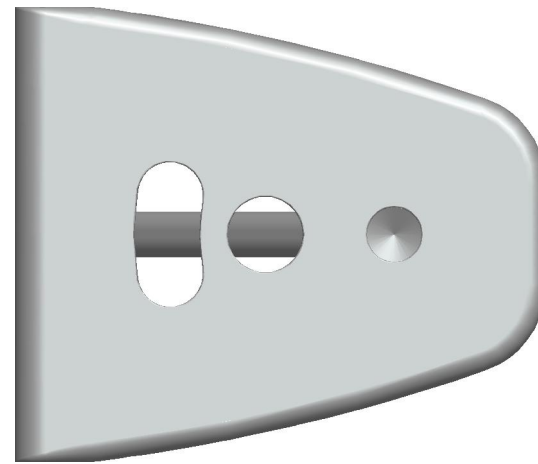
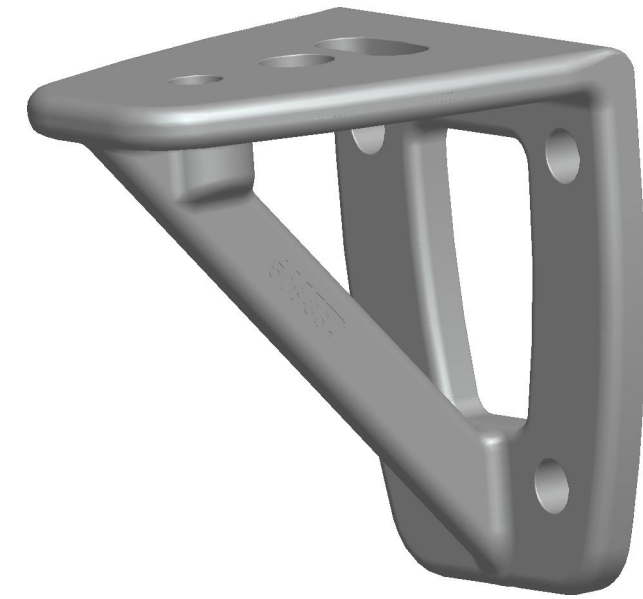
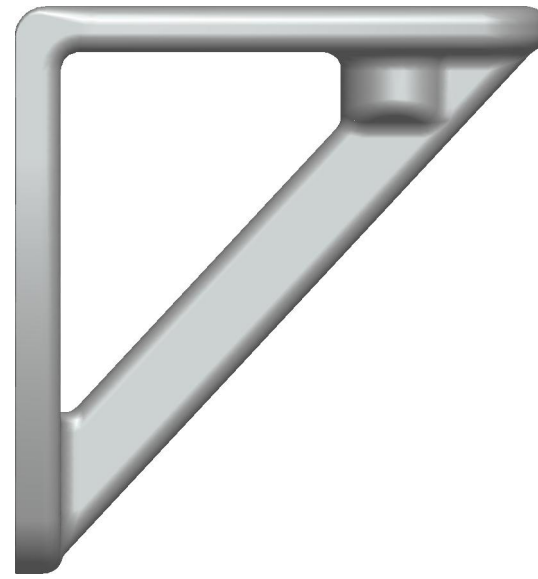
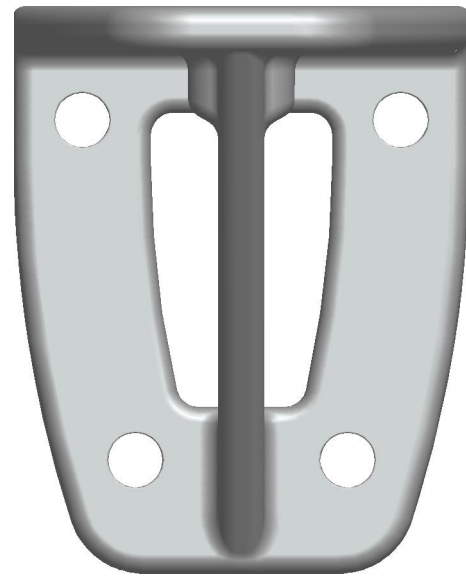
NOTE: 3-D geometry file (.igs. -step. sll etc.) date to correspond with drawing date or latest revision date. E.g. 999-999-yy-mm-dd

No	Qty	Revision	Date	Sign
1	1	TOLERANCE CHANGE TO SS-ISO 2768-c	11-02-22	MA


Material		Estimated mass properties:		Weight	Volume	Desity
AISI_316				326.0g	40.6cm3	8.03g/cm3
Tolerance acc. to SS-ISO 2768-m unless otherwise stated		Replaced by	Replacing	File		3050
Drawn	Date	Scale	Revision	Release	Approved	Part No.
HM	10-12-01	1:1	-	Production		508-834



BOW RING BRACKET 90°  
60x70x75



NOTE: 3-D geometry file (.-igs. -step. sll etc.) date to correspond with drawing date or latest revision date. E.g. 999-999-yy-mm-dd

		<b>BOW RING BRACKET 90°</b> 60x70x75					
		Material	AISI_316	Estimated mass properties:	Weight	Volume	Density
Tolerance acc. to SS-ISO 2768-m unless otherwise stated		Replaced by	Replacing	X	File	3050	
Drawn	Date	Scale	Revision	Release	Approved	Part No.	
HM	10-12-01	1:1	-	Production		508-834	

No	Qty	Revision	Date	Sign