

## Quick, Easy and Reliable

Ronstan's Ballslide™ system makes raising and lowering the mainsail quick and easy. Recirculating captive ball bearings ensure free running performance, and since the cars use the existing luff groove of the mast there is no need to install a track.

### Compatibility

With a complete range of car profiles and feet there is a Ballslide™ solution for most available mast profiles and luff groove shapes on boats up to 18m (60ft). See page 138 for car and feet details. Selection tables and specification sheets can be downloaded from the Ronstan website.

### Convenience

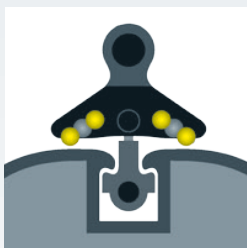
Ballslide™ cars are easily loaded, and just as easily removed from the luff groove of the mast. Larger boats using the Series 8 system may opt for cars with quick release ball joints for the batten receptacles to facilitate initial setup or removal of larger mainsails.

### Performance

**BB** Ballslide™ cars run on twin races of recirculating ball bearings specifically designed and oriented for compression loads. Hoisting and dropping the mainsail has never been easier! Ball joint links for batten receptacles and quick release pins for intermediate cars are configured to minimise the distance from mast to mainsail luff.



Captive ball bearings



Use existing mast luff groove



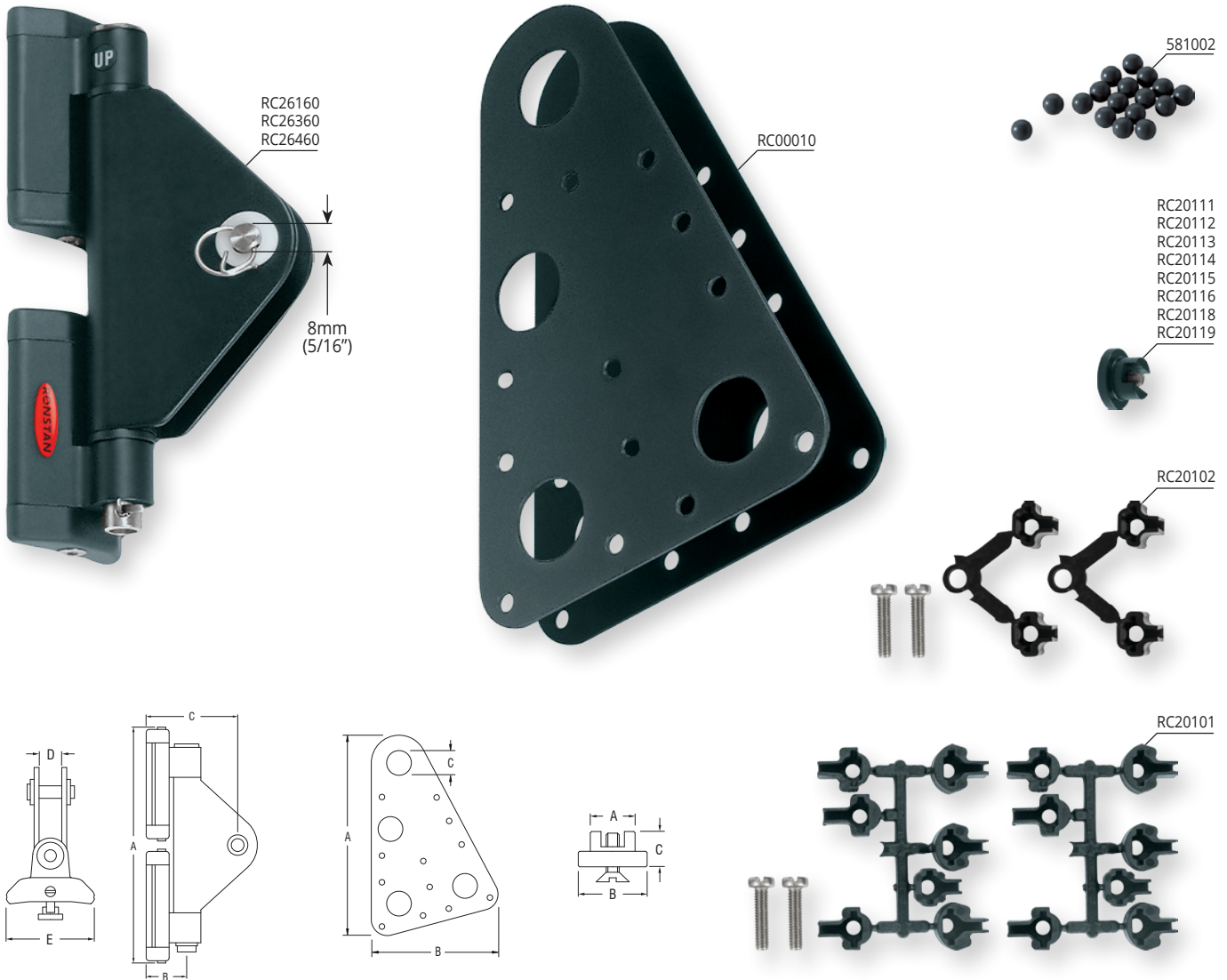
Quick release batten car models



Flexible solutions



Ball joint articulation



✓ Refer to page 138 and the SUPPORT tab of the Ronstan website for additional details regarding cars and feet installation information.

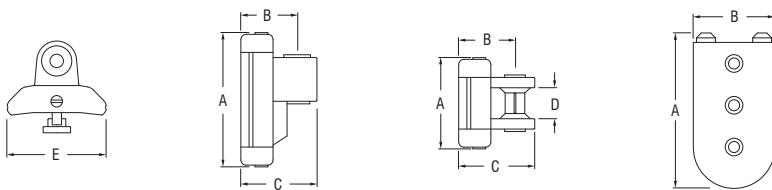
↗ Refer to the SUPPORT tab of the Ronstan website for assistance in specifying system requirements and schematic diagrams.

PRODUCT No.	DESCRIPTION	A	B	C	D	E	WEIGHT	A	B	C	D	E	WEIGHT
		mm	mm	mm	mm	mm	g	in	in	in	in	in	oz
<b>Series 6</b>													
RC00010	Headboard plates (pair)	188.0	119	23.0	-	-	173	7 13/32	4 11/16	29/32	-	-	6.1
RC20101	Replacement Ballslide™ feet kit, suits RC261xx cars, includes one pair of each size foot N1-N7	-	-	-	-	-	1	-	-	-	-	-	0.1
RC20102	Replacement Ballslide™ feet kit, suits RC263xx cars, includes one pair of each size foot N8 & N9	-	-	-	-	-	1	-	-	-	-	-	0.1
RC20111	Ballslide™ feet (pair), with s/s screws & washers, suits RC264xx cars	13.0	20	10.3	-	-	14	1/2	25/32	13/32	-	-	0.5
RC20112	Ballslide™ feet (pair), with s/s screws & washers, suits RC264xx cars	13.7	20	11.4	-	-	14	17/32	25/32	7/16	-	-	0.5
RC20113	Ballslide™ feet (pair), with s/s screws & washers, suits RC264xx cars	13.7	20	11.0	-	-	14	17/32	25/32	7/16	-	-	0.5
RC20114	Ballslide™ feet (pair), with s/s screws & washers, suits RC264xx cars	13.7	20	11.5	-	-	14	17/32	25/32	7/16	-	-	0.5
RC20115	Ballslide™ feet (pair), with s/s screws & washers, suits RC264xx cars	12.8	20	10.5	-	-	14	1/2	25/32	13/32	-	-	0.5
RC20116	Ballslide™ feet (pair), with s/s screws & washers, suits RC264xx cars	8.8	16	6.6	-	-	6	11/32	5/8	1/4	-	-	0.2
RC20118	Ballslide™ feet (pair), with s/s screws & washers, suits RC264xx cars	8.8	16	7.6	-	-	6	11/32	5/8	5/16	-	-	0.2
RC20119	Ballslide™ feet (pair), with s/s screws & washers, suits RC264xx cars	9.8	20	9.9	-	-	10	3/8	25/32	3/8	-	-	0.3
RC26160	Headboard car	160.0	23	62.0	12	41	280	6 5/16	29/32	2 7/16	15/32	1 5/8	9.9
RC26360	Headboard car	160.0	23	62.0	12	41	280	6 5/16	29/32	2 7/16	15/32	1 5/8	9.9
RC26460	Headboard car	160.0	23	62.0	12	41	280	6 5/16	29/32	2 7/16	15/32	1 5/8	9.9
<b>Spare Parts</b>													
581002	Ball bearing, acetal, 6.35mm (1/4") diameter	-	-	-	-	-	1	-	-	-	-	-	0.1





© Armare



✓ Refer to page 138 and the SUPPORT tab of the Ronstan website for additional details regarding cars and feet.

⬆ Refer to the SUPPORT tab of the Ronstan website for assistance in specifying system requirements and schematic diagrams.

⬆ Monohulls to 12m (40ft) or sail area 38m<sup>2</sup> (409ft<sup>2</sup>).

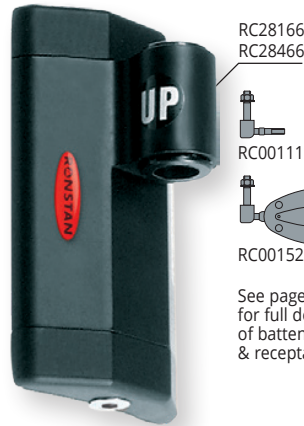
⬆ Multihulls to 9m (30ft) or sail area 30m<sup>2</sup> (323ft<sup>2</sup>).

PRODUCT No.	DESCRIPTION	A	B	C	D	E	WEIGHT	A	B	C	D	E	WEIGHT
		mm	mm	mm	mm	mm	g	in	in	in	in	in	oz
<b>Series 6 <span style="border: 1px solid black; border-radius: 50%; padding: 2px;">BB</span></b>													
RC26163	Intermediate car	55	23	31	18	41	50	2 5/32	29/32	1 7/32	23/32	1 5/8	1.8
RC26166	Batten car	68	23	31	-	41	65	2 11/16	29/32	1 7/32	-	1 5/8	2.3
RC26181	End stop, plastic	68	33	-	-	-	11	2 11/16	1 5/16	-	-	-	0.4
RC26363	Intermediate car	55	23	31	18	41	50	2 5/32	29/32	1 7/32	23/32	1 5/8	1.8
RC26366	Batten car	68	23	31	-	41	65	2 11/16	29/32	1 7/32	-	1 5/8	2.3
RC26463	Intermediate car	55	23	31	18	41	50	2 5/32	29/32	1 7/32	23/32	1 5/8	1.8
RC26466	Batten car	68	23	31	-	41	65	2 11/16	29/32	1 7/32	-	1 5/8	2.3
<b>Spare Parts</b>													
601372	Replacement pin for RC26163, RC26363, RC26463	-	-	-	-	-	5	-	-	-	-	-	0.2
RC00021	Replacement bush for RC26163, RC26363, RC26463	-	-	-	-	-	1	-	-	-	-	-	0.1

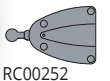


- ✓ Refer to page 138 and the SUPPORT tab of the Ronstan website for additional details regarding cars and feet.
- ▲ Refer to the SUPPORT tab of the Ronstan website for assistance in specifying system requirements and schematic diagrams.

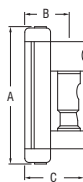
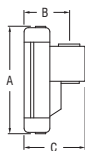
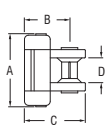
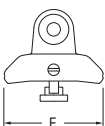
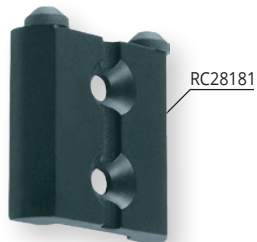
PRODUCT No.	DESCRIPTION	A	B	C	D	E	WEIGHT	A	B	C	D	E	WEIGHT
		mm	mm	mm	mm	mm	g	in	in	in	in	in	oz
<b>Series 8 <sup>BB</sup></b>													
RC00010	Headboard plates (pair)	188	119	23	-	-	173	7 13/32	4 11/16	29/32	-	-	6.1
RC28160	Headboard car	214	30	75	16.5	51	520	8 7/16	1 3/16	2 15/16	2 1/32	2	18.3
RC20101	Replacement Ballslide™ feet kit, suits RC281xx cars, includes one pair of each size foot N1-N7	-	-	-	-	-	1	-	-	-	-	-	0.1
RC20130	Ballslide™ feet (pair), suits RC284xx cars	13.3	24.0	11.4	-	-	22	17/32	15/16	7/16	-	-	0.8
RC20131	Ballslide™ feet (pair), suits RC284xx cars	11.6	23.0	11.8	-	-	20	15/32	29/32	15/32	-	-	0.7
RC20135	Ballslide™ feet (pair), suits RC284xx cars	12.5	24.0	10.5	-	-	22	1/2	15/16	13/32	-	-	0.8
RC28161	Headboard car	290	30	75	16.5	51	750	11 7/16	1 3/16	2 15/16	2 1/32	2	26.5
RC28460	Headboard car	214	30	75	16.5	51	520	8 7/16	1 3/16	2 15/16	2 1/32	2	18.3
RC28461	Headboard car	290	30	75	16.5	51	750	11 7/16	1 3/16	2 15/16	2 1/32	2	26.5
<b>Spare Parts</b>													
581004	Ball bearing, acetal, 8.00mm (0.315") diameter	-	-	-	-	-	1	-	-	-	-	-	0.1



See page 161 for full details of batten links & receptacles



See page 161 for full details of batten links & receptacles



- ✓ Refer to page 138 and the SUPPORT tab of the Ronstan website for additional details regarding cars and feet.
- ⬆ Refer to the SUPPORT tab of the Ronstan website for assistance in specifying system requirements and schematic diagrams.

- ⬆ Long cars: Monohulls to 18m (60ft) or sail area 60m<sup>2</sup> (646ft<sup>2</sup>).
- ⬆ Long cars: Multihulls to 13m (43ft) or sail area 48m<sup>2</sup> (517ft<sup>2</sup>).

- ⬆ Short cars: Monohulls to 16m (53ft) or sail area 53m<sup>2</sup> (570ft<sup>2</sup>).
- ⬆ Short cars: Multihulls to 11m (36ft) or sail area 42m<sup>2</sup> (452ft<sup>2</sup>).

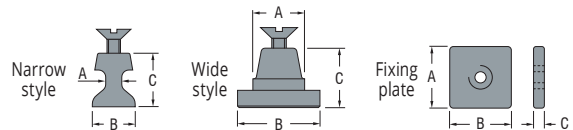
PRODUCT No.	DESCRIPTION	A	B	C	D	E	WEIGHT	A	B	C	D	E	WEIGHT
		mm	mm	mm	mm	mm	g	in	in	in	in	in	oz
<b>Series 8 <sup>BB</sup></b>													
RC28163	Intermediate car	76.0	30.0	37.0	18	51	115	3	1 3/16	1 15/32	23/32	2	4.1
RC28166	Batten car	92.0	30.0	37.0	-	51	140	3 5/8	1 3/16	1 15/32	-	2	4.9
RC28169	Quick release batten car	105.0	30.0	37.0	-	51	220	4 1/8	1 3/16	1 15/32	-	2	7.8
RC28181	End stop	54.0	45.0	-	-	-	35	2 1/8	1 25/32	-	-	-	1.2
RC28463	Intermediate car	76.0	30.0	37.0	18	51	115	3	1 3/16	1 15/32	23/32	2	4.1
RC28466	Batten car	92.0	30.0	37.0	-	51	140	3 5/8	1 3/16	1 15/32	-	2	4.9
RC28469	Quick release batten car	105.0	30.0	37.0	-	51	220	4 1/8	1 3/16	1 15/32	-	2	7.8
<b>Spare Parts</b>													
601372	Replacement pin for RC28163, RC28463	-	-	-	-	-	5	-	-	-	-	-	0.2
RC00021	Replacement bush for RC28163, RC28463	-	-	-	-	-	1	-	-	-	-	-	0.1



## Ballslide™ System - Car/Foot Identification & Replacement Parts

		NARROW Foot Cars		WIDE Foot Cars																																																																
		<p>Foot identification number</p> <p>Series 6 - 41mm (1 5/8") wide Series 8 - 51mm (2") wide</p>		<p>Series 6 - 41mm (1 5/8") wide Series 8 - 51mm (2") wide</p>																																																																
<b>SERIES 6</b>	<b>RC261XX</b> Includes 2 x foot sets (N1 to N7), and 2 x screws.	<b>RC263XX</b> Includes 2 x foot sets (N8 & N9), and 2 x screws.	<b>RC264XX</b> Feet not included. Order separately, 1 pair required per car - see below.																																																																	
Replacement Foot Set	<p><b>RC20101</b> Includes 2 x foot sets, and 2 x screws.</p>	<p><b>RC20102</b> Includes 2 x foot sets, and 2 x screws.</p>	Order separately. Includes washer & screw. <table border="1"> <thead> <tr> <th>Foot PRODUCT No.</th> <th>A mm</th> <th>B mm</th> <th>C mm</th> <th>A in</th> <th>B in</th> <th>C in</th> </tr> </thead> <tbody> <tr><td>RC20111</td><td>13.0</td><td>20.0</td><td>10.4</td><td>1/2</td><td>25/32</td><td>13/32</td></tr> <tr><td>RC20112</td><td>13.7</td><td>20.0</td><td>11.4</td><td>17/32</td><td>25/32</td><td>7/16</td></tr> <tr><td>RC20113</td><td>13.7</td><td>20.0</td><td>11.0</td><td>17/32</td><td>25/32</td><td>7/16</td></tr> <tr><td>RC20114</td><td>13.7</td><td>20.0</td><td>11.5</td><td>17/32</td><td>25/32</td><td>7/16</td></tr> <tr><td>RC20115</td><td>12.8</td><td>20.0</td><td>10.5</td><td>1/2</td><td>25/32</td><td>13/32</td></tr> <tr><td>RC20116</td><td>8.8</td><td>16.0</td><td>6.6</td><td>11/32</td><td>5/8</td><td>1/4</td></tr> <tr><td>RC20118</td><td>8.8</td><td>16.0</td><td>7.6</td><td>11/32</td><td>5/8</td><td>5/16</td></tr> <tr><td>RC20119</td><td>9.8</td><td>20.0</td><td>10.0</td><td>12/32</td><td>25/32</td><td>13/32</td></tr> </tbody> </table>			Foot PRODUCT No.	A mm	B mm	C mm	A in	B in	C in	RC20111	13.0	20.0	10.4	1/2	25/32	13/32	RC20112	13.7	20.0	11.4	17/32	25/32	7/16	RC20113	13.7	20.0	11.0	17/32	25/32	7/16	RC20114	13.7	20.0	11.5	17/32	25/32	7/16	RC20115	12.8	20.0	10.5	1/2	25/32	13/32	RC20116	8.8	16.0	6.6	11/32	5/8	1/4	RC20118	8.8	16.0	7.6	11/32	5/8	5/16	RC20119	9.8	20.0	10.0	12/32	25/32	13/32
Foot PRODUCT No.	A mm	B mm	C mm	A in	B in	C in																																																														
RC20111	13.0	20.0	10.4	1/2	25/32	13/32																																																														
RC20112	13.7	20.0	11.4	17/32	25/32	7/16																																																														
RC20113	13.7	20.0	11.0	17/32	25/32	7/16																																																														
RC20114	13.7	20.0	11.5	17/32	25/32	7/16																																																														
RC20115	12.8	20.0	10.5	1/2	25/32	13/32																																																														
RC20116	8.8	16.0	6.6	11/32	5/8	1/4																																																														
RC20118	8.8	16.0	7.6	11/32	5/8	5/16																																																														
RC20119	9.8	20.0	10.0	12/32	25/32	13/32																																																														
Replacement Ball	<b>581002</b> 6.35mm (1/4") diameter	<b>581002</b> 6.35mm (0.25in) diameter	<b>581002</b> 6.35mm (0.25in) diameter																																																																	
<b>SERIES 8</b>	<b>RC281XX</b> Includes 2 x foot sets (N1 to N7), and 2 x screws.		<b>RC284XX</b> Feet not included. Order separately, 1 pair required per car - see below.																																																																	
Replacement Foot Set	<p><b>RC20101</b> Includes 2 x foot sets, and 2 x screws.</p>		Order separately. Includes washer & screw. <table border="1"> <thead> <tr> <th>Foot PRODUCT No.</th> <th>A mm</th> <th>B mm</th> <th>C mm</th> <th>A in</th> <th>B in</th> <th>C in</th> </tr> </thead> <tbody> <tr><td>RC20130</td><td>13.3</td><td>24.0</td><td>11.4</td><td>17/32</td><td>15/16</td><td>7/16</td></tr> <tr><td>RC20131</td><td>11.6</td><td>23.0</td><td>11.8</td><td>15/32</td><td>29/32</td><td>15/32</td></tr> </tbody> </table>			Foot PRODUCT No.	A mm	B mm	C mm	A in	B in	C in	RC20130	13.3	24.0	11.4	17/32	15/16	7/16	RC20131	11.6	23.0	11.8	15/32	29/32	15/32																																										
Foot PRODUCT No.	A mm	B mm	C mm	A in	B in	C in																																																														
RC20130	13.3	24.0	11.4	17/32	15/16	7/16																																																														
RC20131	11.6	23.0	11.8	15/32	29/32	15/32																																																														
Replacement Ball	<b>581004</b> 8.00mm (0.315in) diameter		<b>581004</b> 8.00mm (0.315in) diameter																																																																	

## Track & Car System - Track Mounting Slugs & Fixing Plates



PRODUCT No.	BATTEN TRACK SUITED	STYLE	FASTENING	A mm	B mm	C mm	A in	B in	C in
RC00310*	Series 19	Narrow	M5 countersunk (included)	3.7	9.4	13.5	5/32	3/8	17/32
RC00312	Series 19	Narrow	M5 countersunk (included)	2.8	7.6	12.6	1/8	5/16	1/2
RC00315*	Series 19	Narrow	M5 countersunk (included)	4.6	12.7	16.0	3/16	1/2	5/8
RC00316	Series 19	Narrow	M5 countersunk (included)	3.6	11.0	15.0	5/32	7/16	19/32
RC00321	Series 19	Wide	M5 countersunk (included)	11.8	19.9	13.0	15/32	25/32	1/2
RC00322	Series 19	Wide	M5 countersunk (included)	13.5	21.0	13.0	15/32	27/32	1/2
RC00323	Series 19	Wide	M5 countersunk (included)	8.1	15.0	13.5	5/16	19/32	17/32
RC00370*	Series 19	Fixing plate	M5 countersunk (not included)	25.0	20.0	5.0	1	25/32	3/16
RC00332	Series 22, 26	Narrow	M6 countersunk (included)	3.5	8.3	16.1	1/8	5/16	5/8
RC00333*	Series 22, 26	Narrow	M6 countersunk (included)	4.6	13.0	18.0	3/16	1/2	23/32
RC00341	Series 22, 26	Wide	M6 countersunk (included)	13.6	21.0	15.5	17/32	27/32	5/8
RC00343	Series 22, 26	Wide	M6 countersunk (included)	11.8	19.8	15.5	15/32	25/32	5/8
RC00380*	Series 22, 26	Fixing plate	M6 countersunk (not included)	25.0	20.0	5.0	1	3/4	3/16
RC00360*	Series 30	Wide	M8 countersunk (included)	12.6	22.9	18.0	1/2	29/32	23/32

\* Most commonly used