

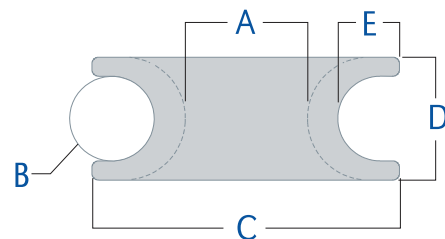
FERRULES

Tylaska

MARINE HARDWARE

Tylaska Ring Ferrules

Lighter and smaller than a conventional pulley block, ferrules have become a popular alternative for many applications where traditional blocks once ruled. Instead of rolling on a pulley sheave, the active line with a ferrule merely slides on the inside smooth surface of the ring. Another line is spliced around the ferrule for attaching it. This attachment line is sometimes made as a loop that is luggage tagged onto a padeye or the toe rail. Frictional losses are not as big as one might think, especially when using low friction line such as dyneema. In addition to being lighter and less expensive than conventional blocks, ring ferrules are also less prone to failure since there are no pulleys to crack or bearings to foul.



FERRULE	A in (mm)	B in (mm)	C in (mm)	D in (mm)	E in (mm)	Line Size (Recommended)	SWL lb (kg)	Breaking Strength lb (kg)
FR3	0.188 (4.8)	0.130 (3.3)	0.472 (12)	0.200 (5.1)	0.094 (2.4)	1/8", 3mm	350* (160*)	700* (320*)
FR4	0.250 (6.4)	0.173 (4.4)	0.620 (15.7)	0.252 (6.4)	0.121 (3.1)	5/32", 4mm	600 (275)	1,200 (550)
FR5	0.313 (7.9)	0.217 (5.5)	0.787 (20)	0.315 (8)	0.157 (4)	3/16", 5mm	950* (430*)	1,900* (860*)
FR6	0.375 (9.5)	0.260 (6.6)	0.945 (24)	0.377 (9.6)	0.189 (4.8)	1/4", 6mm	1,400* (640*)	2,800* (1,280*)
FR7	0.438 (11.1)	0.303 (7.7)	1.102 (28)	0.440 (11.2)	0.220 (5.6)	9/32", 7mm	1,900 (860)	3,800 (1,720)
FR8	0.500 (12.7)	0.346 (8.8)	1.245 (31.6)	0.503 (12.8)	0.245 (6.2)	5/16", 8mm	2,500* (1,140*)	5,000* (2,270*)
FR10	0.625 (15.9)	0.433 (11)	1.575 (40)	0.629 (16)	0.315 (8)	3/8", 10mm	4,000 (1,820)	8,000 (3,640)
FR14	0.875 (22.2)	0.606 (15.4)	2.205 (56)	0.881 (22.4)	0.441 (11.2)	9/16", 14mm	7,000 (3,180)	14,000 (6,360)
FR18	1.000 (25.4)	0.716 (18.2)	2.495 (63.4)	1.030 (26.2)	0.504 (12.8)	3/4", 18mm	9,000* (4,090*)	18,000* (8,180*)
FR22	1.250 (31.8)	0.866 (22)	3.150 (80)	1.258 (32)	0.630 (16)	7/8", 22mm	14,000* (6,360*)	28,000* (12,720*)
FR26	1.500 (38.1)	1.039 (26.4)	3.780 (96)	1.510 (38.3)	0.755 (19.2)	1", 26mm	20,000* (9,080*)	40,000* (18,160*)

*Estimated loads pulling the ferrule apart side to side

FERRULES

FERRULE APPLICATIONS:

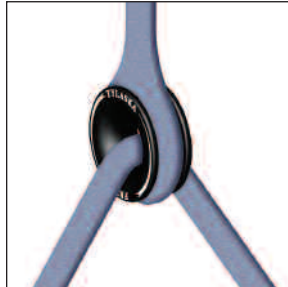
Ferrules are ideal for applications such as barber haulers, spinnaker twings or other uses that have small turning angles and little line movement. They also work great for backstay adjusters when used in a high purchase cascade configuration. Ferrules start having frictional heating and wear problems when there is significant line movement so conventional pulleys are still better for applications such as mainsheet and halyard blocks.

Numerous sizes are available depending on the application and line size. Tylaska ferrules are also optionally available with prespliced dyneema attachment loops. Please specify desired length.

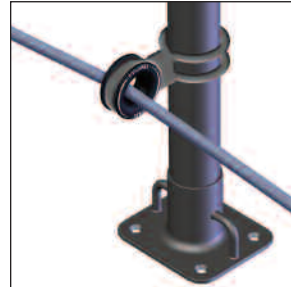
Examples of some typical applications where ferrules can be used:



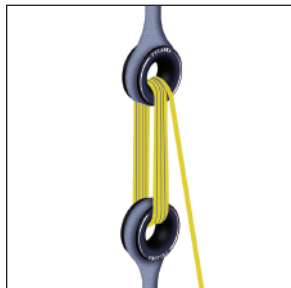
Barber Hauler



Backstay Bridle



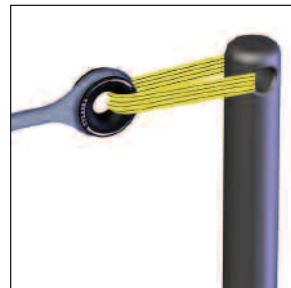
Furling Lead



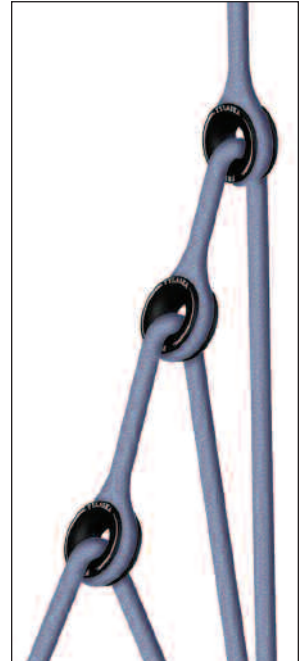
Block and Tackle



Turnbuckle



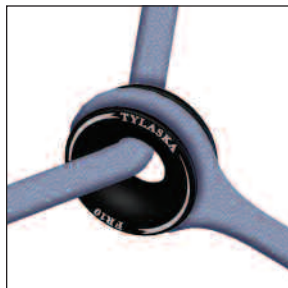
Thimbles for synthetic life line & other rigging



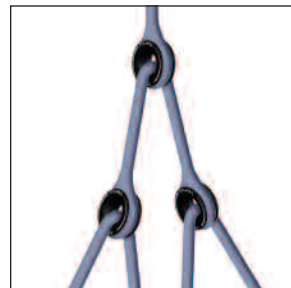
Cascading Back Stay Adjusters and Boom Vangs
2:1, 4:1, 8:1, 16:1



Inhalers



Spinnaker Twing



Lazy Jacks

Hardcoat anodized for lower friction and better wear resistance.

Larger diameter flange prevents line from rubbing against attachment loop during high turning angles.

Generous edge chamfers and flowing hole radius reduces line wear.

Thick flanges resist bending under high loads.



Tylaska
MARINE HARDWARE