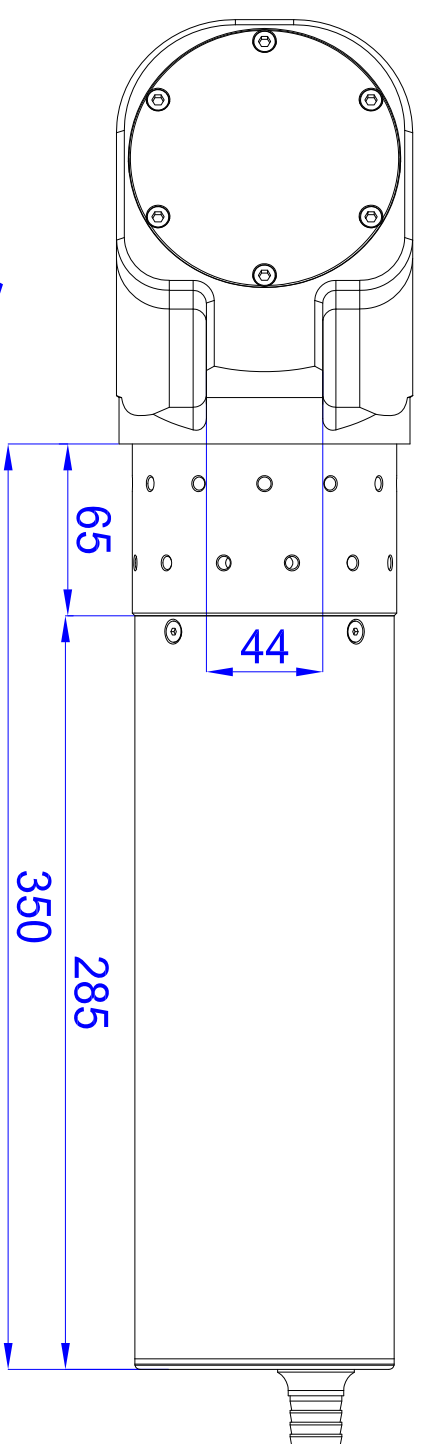
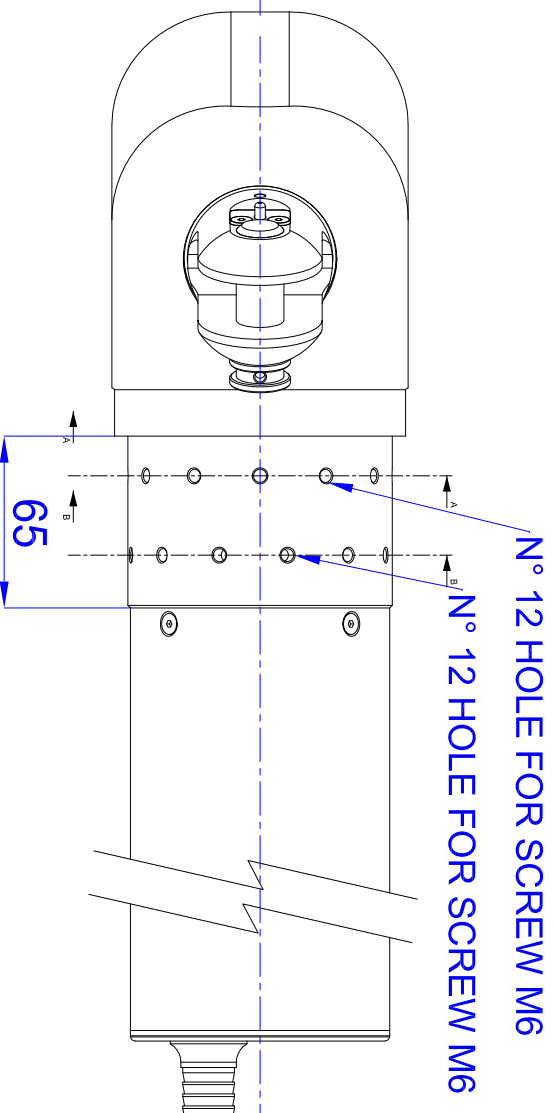
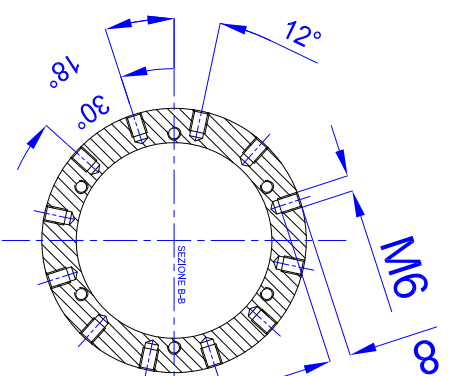
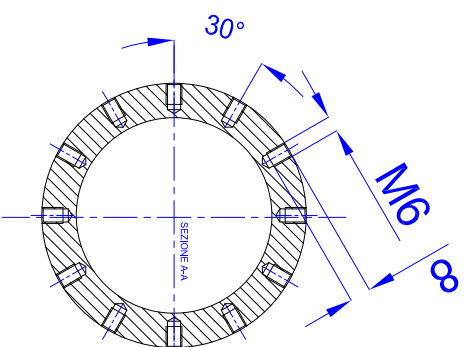
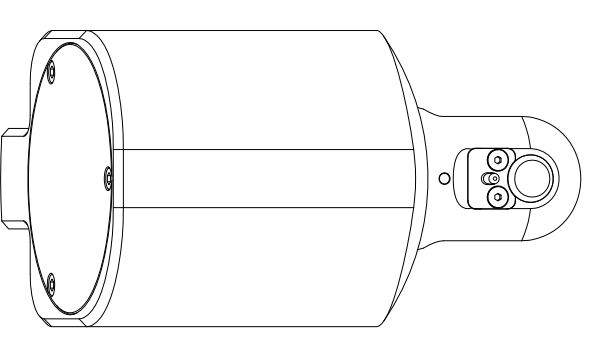
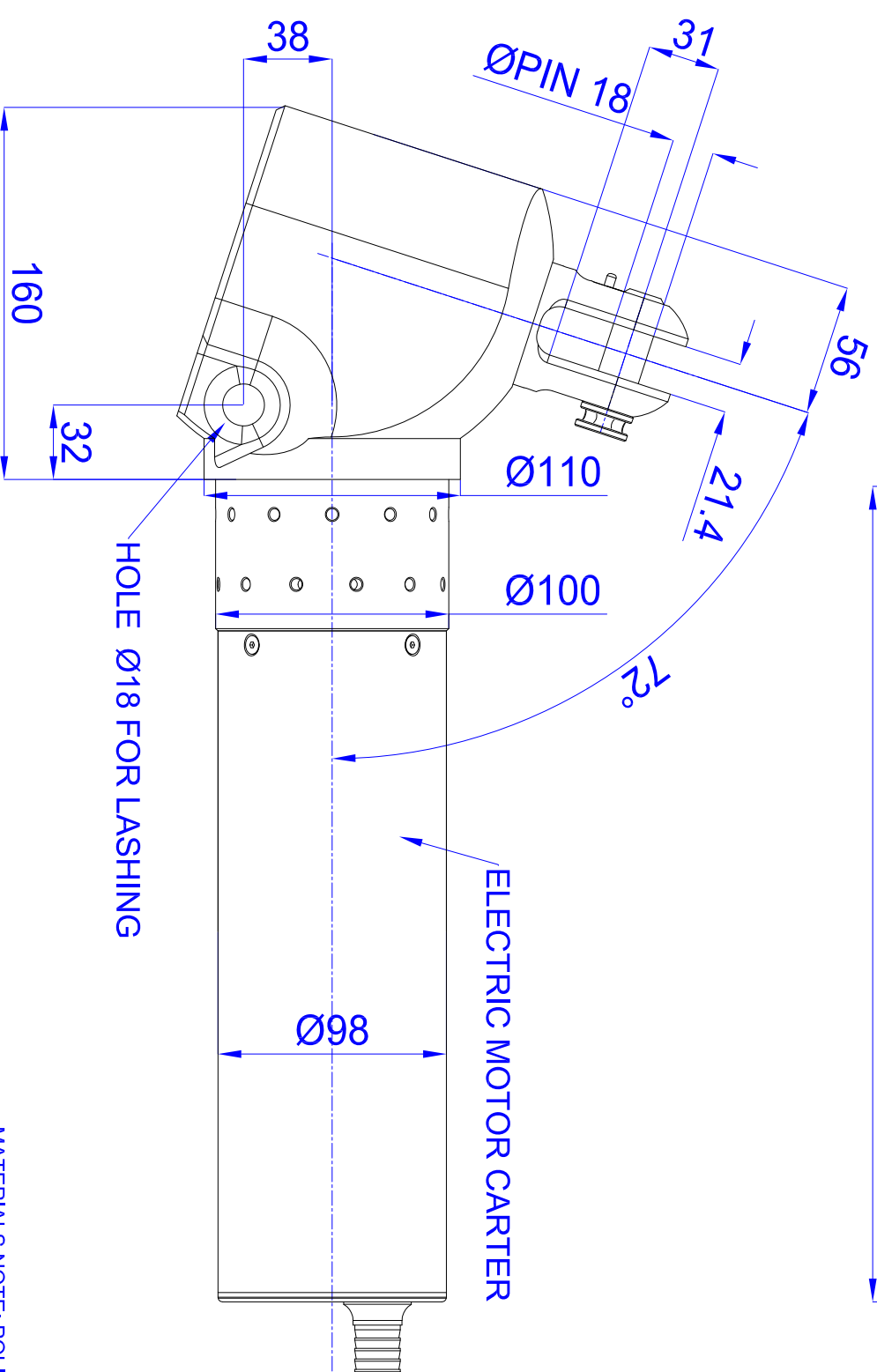
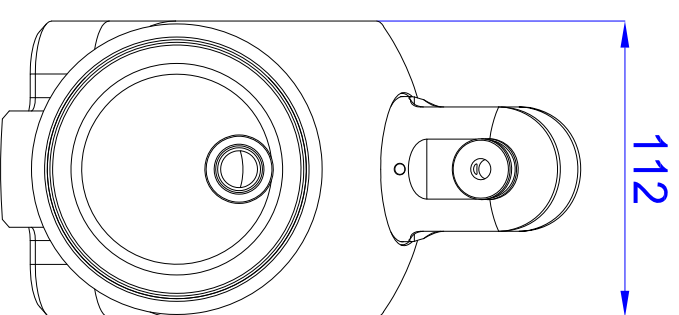


PRELIMINARY



TECHNICAL DATA	
MAX STAY WORKING LOAD	8000 -10000 Kg
Ø PIN	18 mm
VOLTAGE	24 V
RATE POWER	600 Watt
RPM FORK [S2-15' / S2-11]	[90-110] RPM
TORQUE [S2-15' @33A / MAX S2-1' @70A]	[40 - 100] Nm
WEIGHT	APPROX [20-23] Kg



MATERIALS NOTE: POLISHED S.S. FORK & BODY

REV.	DESCRIZIONE MODIFICA - MODIFY DESCRIPTION	DATA - DATE	APPROVATO - APPROVED
E	MODIFIED CARTER SHAPE	06-06-2018	A.S.
D	MODIFIED CARTER AND MOTOR LENGTH	01-06-2018	A.S.
C	MODIFIED MOTOR LENGTH	28-05-2018	A.S.
B	REVISED FOR LASHING	12-12-2016	A.S.
A	FIRST ISSUE	24-11-2016	A.S.

Tolleranze dimensionali e geometriche per elementi privi di tolleranze specifiche, secondo: Dimensional and geometrical tolerances for elements without specific tolerances according to UNI - EN 22768 m . K	Finiture prive di tolleranze da eseguire in: Threading without tolerances to be performed in: H9 - e7	Spigoli - Edges 0.5 x 45°	Filatura - Fillets R 0.5	Rugosità generale General roughness 3.2 / 1.6
---	---	------------------------------	-----------------------------	---

Descrizione - Description LAYOUT BSWE 8-10T	Disegno n° - Drawing n° 80109181	Codice
--	-------------------------------------	--------

Macchina - Machine REF.	Dimension-Dimension	Peso-Weight (Kg)	Q.tà-Q.ty
----------------------------	---------------------	------------------	-----------

Disegnatore-Draftsman Amedeo Saverna	Data-Date 24-11-2016	Approvato - Approved by: Amedeo Saverna	Data-Date 24-11-2016
---	-------------------------	--	-------------------------

Soluzioni Meccaniche srl si riserva a termini di legge la proprietà di questo disegno, con diritto di riproduzione o di renderlo comunque noto a terzi senza la specifica approvazione Soluzioni Meccaniche srl holds the legal proprietary rights of this drawing. Unauthorized reproduction or disclosure of the drawing to third parties is forbidden	Scale-Scale 1:1	Unità-Unit mm	UNI AO
---	--------------------	------------------	--------

TECHNICAL DATA AND ILLUSTRATION ARE INDICATIVE AND NOT BINDING

