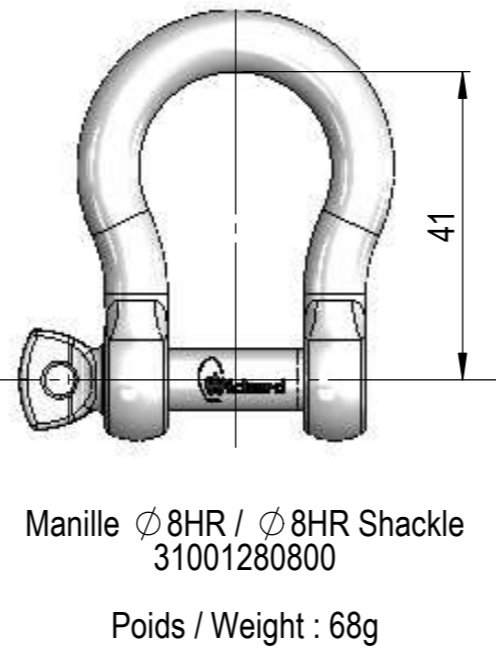
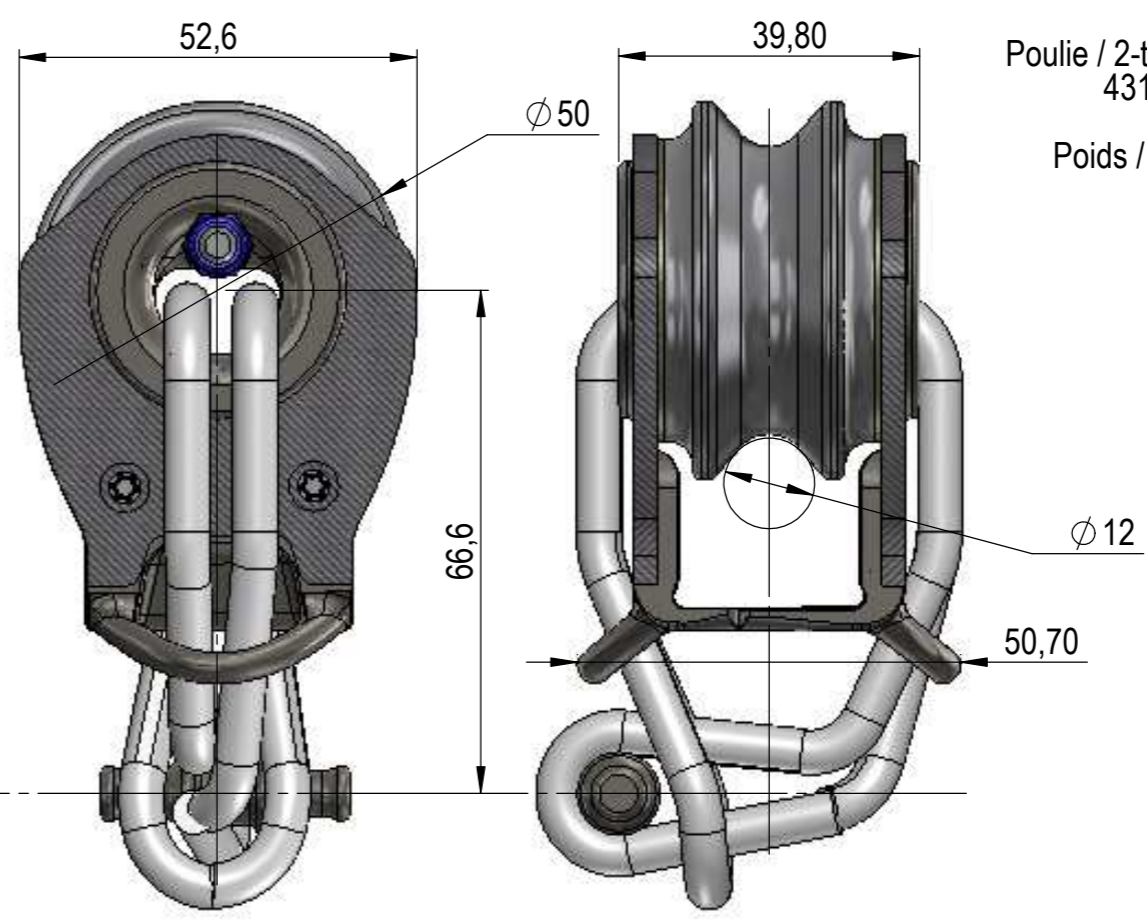


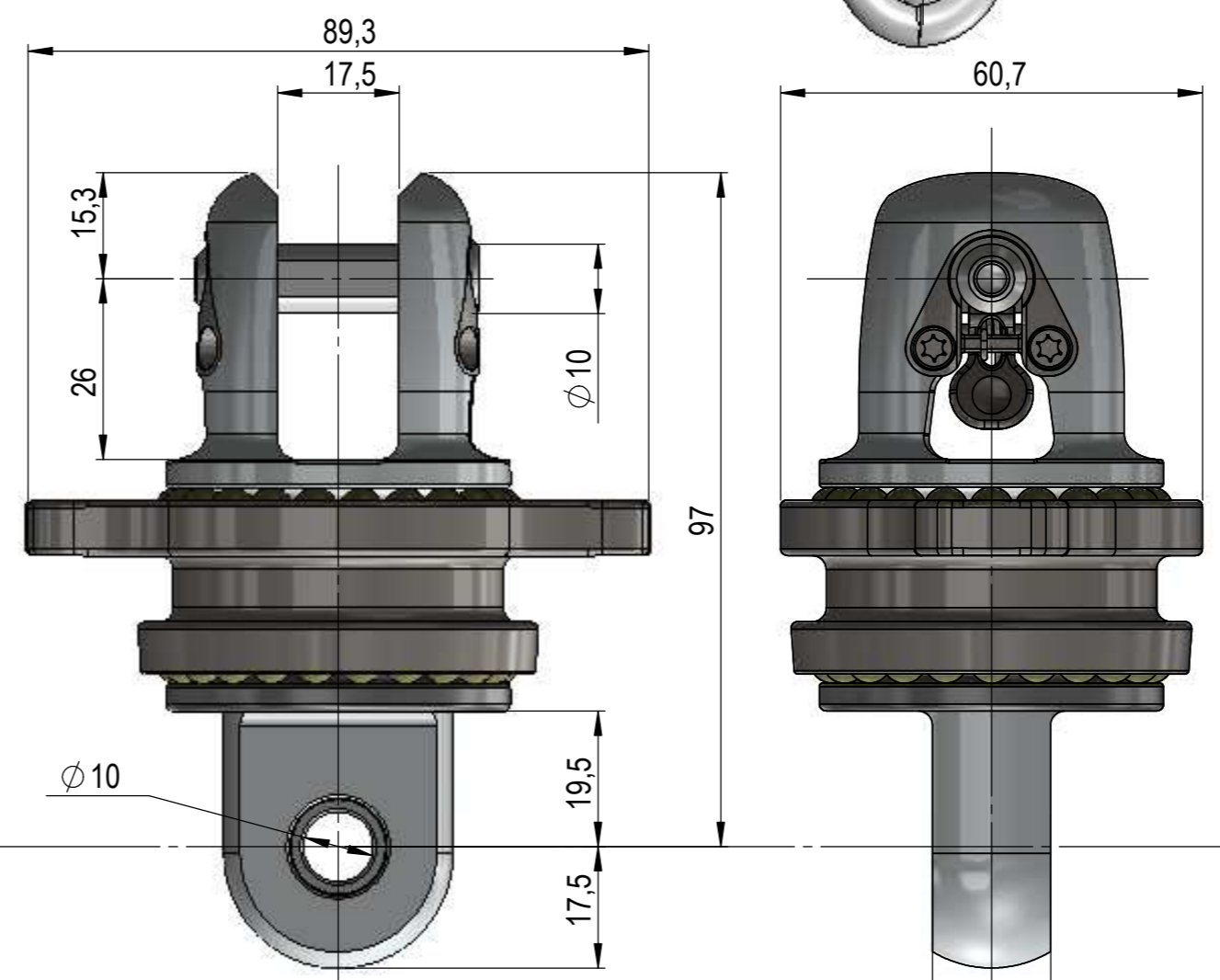
Émerillon / Swivel
43420102530
Poids / Weight : 303g



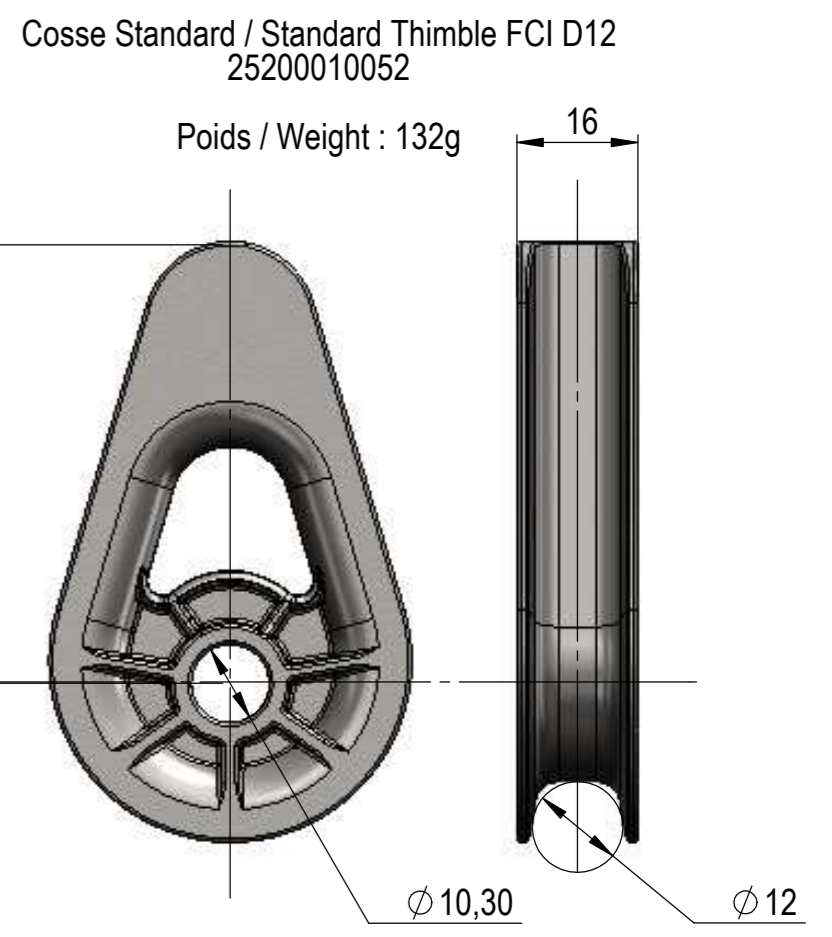
Manille Ø8HR / Ø8HR Shackle
31001280800
Poids / Weight : 68g



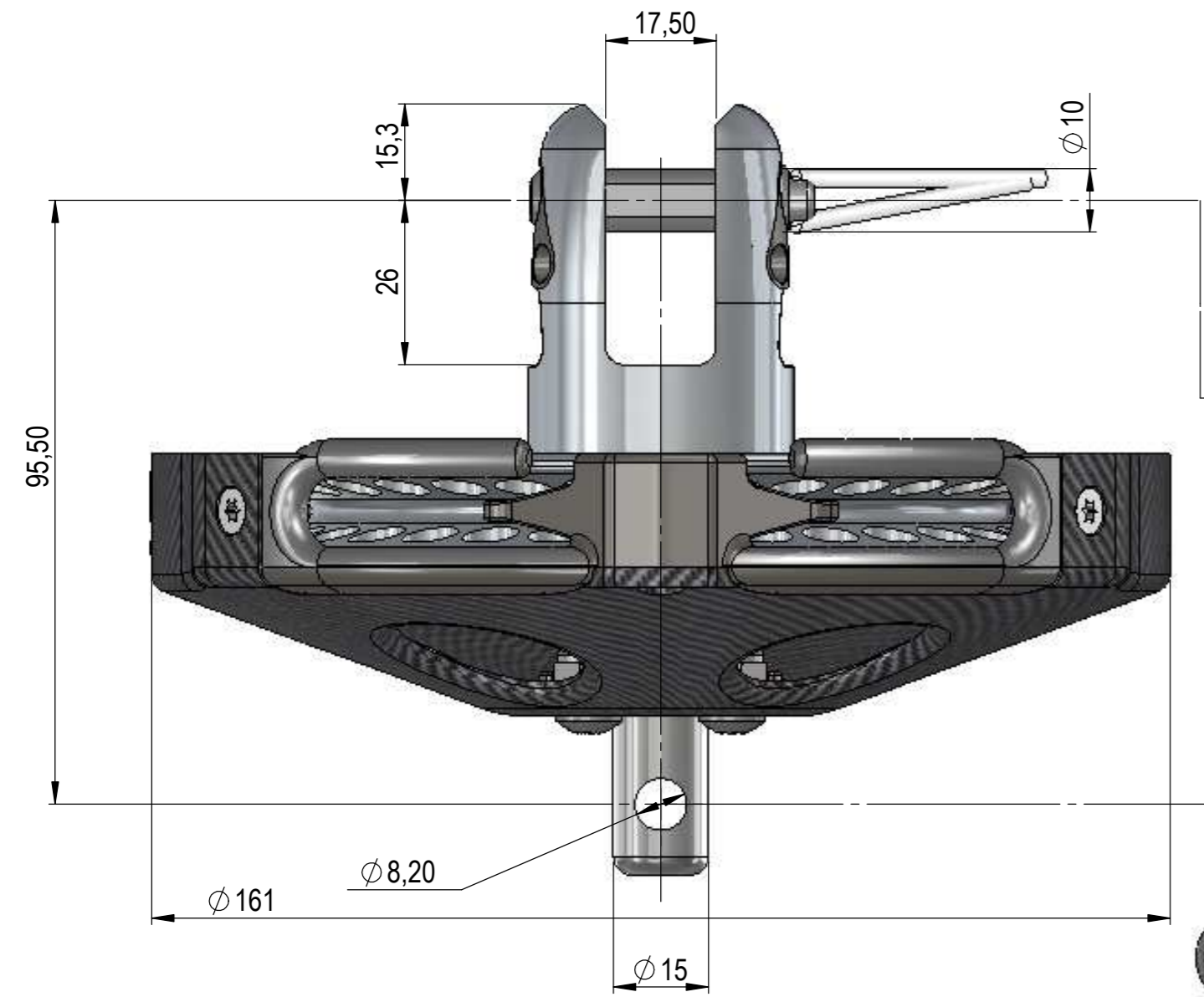
Poulie / 2-to-1 block SB2500
43170102540
Poids / Weight : 324g



Cosse FAST 2500 / Thimble FAST 2500
43230002540
(Fournie avec Loop / Supplied with Loop)
Poids / Weight : 429g



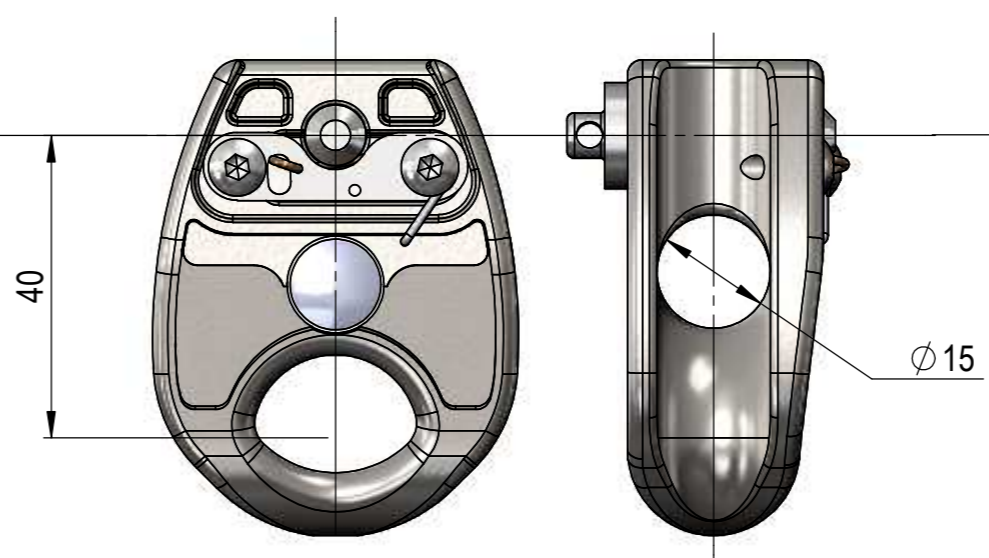
Cosse Standard / Standard Thimble FCI D12
25200010052
Poids / Weight : 132g



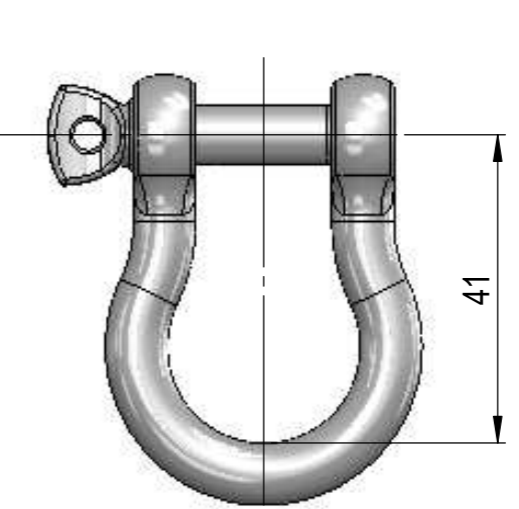
Poulie crantée / Endless line drum
43420202530
Poids / Weight : 767g



Mousqueton / Snapshackle
31003271600
Poids / Weight : 130g



Palan de friction / Solid Sheave SSH2500
43130722500
Poids / Weight : 217g



Manille Ø8HR / Ø8HR Shackle
31001280800
Poids / Weight : 68g

ECHELLE 1:1 / Full scale

FX+ 2500 - Encombrement		A2	Ech:1:1	FACNOR S.A. Parc d'Activités - B.P. 222 F-50550 SAINT-VAAST-LA-HOUGUE tel. +33 (0)2 33 88 50 22 fax. +33 (0)2 33 23 14 27
FX+2500 - Dimensions				
Date:23/12/2014	Tol. Gén.:	Etude: 2014MF0		
Auteur: LLerat	Matière:	Ce plan est la propriété intellectuelle de FACNOR SA. Il ne peut être divulgué à des tiers sans notre autorisation écrite, ni servir à d'autres fabrications.		
Indice:	Finition:			