

# ROPEYE Stick-on Bolt

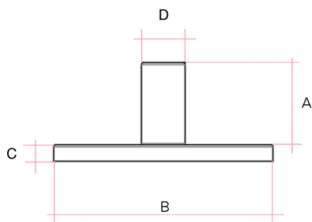
Ropeye Stick-on range is designed ad fittings for inside and outside use to organize wire, electronics system and other equipment without the need to drill holes for installation.



CARBON FIBER

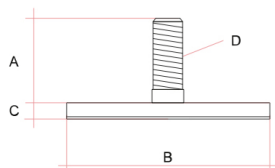


GLASS FIBER



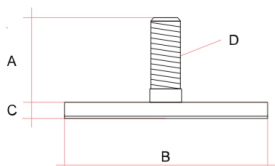
## Ropeye Stick-On Bolt (female)

	A Lenght mm	B Pad dia mm	C Width mm	D Screw dia mm	Weight g	Max Breaking Load / kg	Safe Working Load / kg	Material
Stick-on Bolt	18	40	3	8 (M6)	8.2	200	100	Inox



## Ropeye Stick-On Bolt (male)

	A Lenght mm	B Pad dia mm	C Width mm	D Screw dia mm	Weight g	Max Breaking Load / kg	Safe Working Load / kg	Material
Stick-on Bolt	18	40	4	M6	8.2	200	100	Inox



## Ropeye Stick-On Bolt (male)

	A Lenght mm	B Pad dia mm	C Width mm	D Screw dia mm	Weight g	Max Breaking Load / kg	Safe Working Load / kg	Material
Stick-on Bolt	15	40	4	M6	8.2	200	100	Aluminium

## INSTALLATION

Prepare the installation area by sanding the surface. Clean the sanded installation area with acetone to remove dust and grease. Apply Sikaflex 291i or other adhesive to the peel ply area of the product. Apply pressure to secure the product to the installation area. Wait 24 hours before putting any load on the product.

## ATTENTION

- PRODUCTS MUST ALWAYS BE GLUED TO A CLEAN SURFACE
- IF YOU WANT AN OPTION TO REMOVE THE PRODUCT AFTERWARDS, USE SIKAFLEX OR OTHER FLEXIBLE GLUE
- FOR A PERMANENT BOND USE A RESIN BASED ADHESIVE
- DO NOT EXCEED SAFE WORKING LOAD

IF YOU NEED ANY HELP ON INSTALLATION SEND AN EMAIL TO: SALES@ROPEYE.COM

ROPEYE PRODUCTS HAVE A 2 YEAR WARRANTY



www.ropeye.com